

No 01801

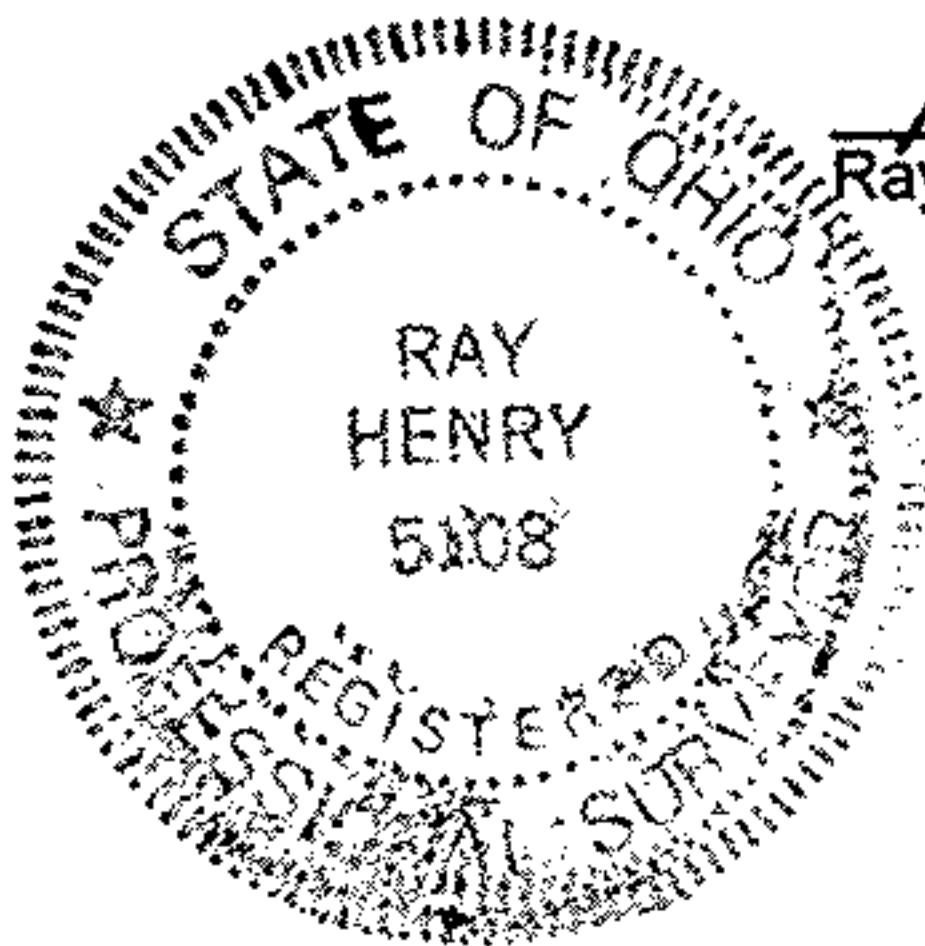
04-00-008-104 114, 115

APPROVED  
LORAIN CO.  
MAP DEPT.  
DATE 12-15-04  
PAGE 4-00-008-H  
BY R. MAINES  
04-01801

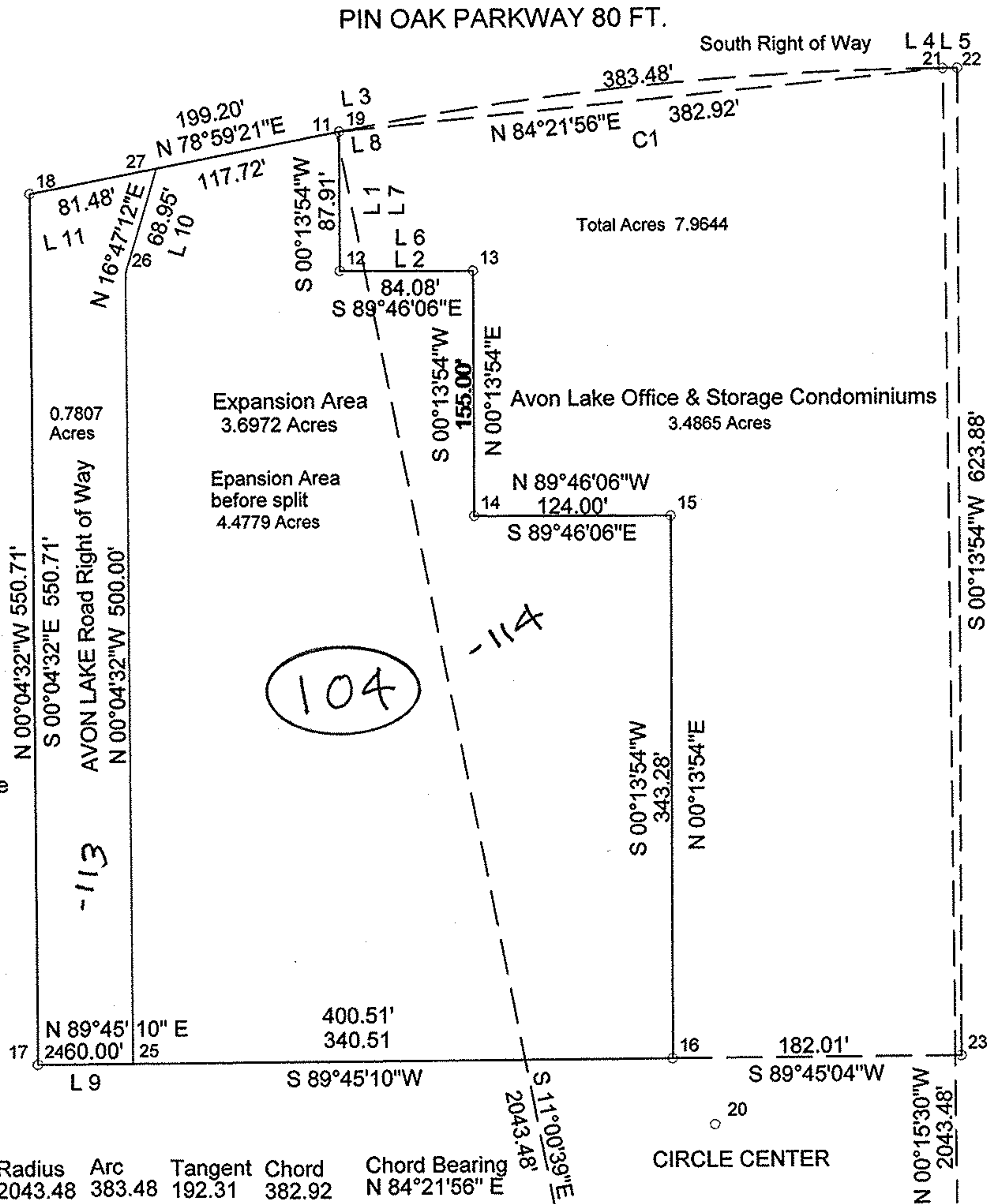


SCALE 1" = 100'  
Surveyed by Ray Henry P.E. P.S.  
Reg S-OH 5108 E-OH 34519  
October 2004

*Ray Henry P.E. P.S.*  
Ray Henry P.E. P.S. December 6 2004



Line	Bearing	Distance
1	S 00°13'54"W	87.91'
2	S 89°46'06"E	84.08'
3	S 83°34'39"W	0.01'
4	N 89°44'30"E	9.15'
5	N 89°44'30"E	9.15'
6	N 89°46'06"W	84.08'
7	N 00°13'54"E	87.91'
8	N 83°34'39"E	0.01'
9	N 89°45'10"E	60.00'
10	N 16°47'12"E	68.95'
11	S 78°59'21"W	81.48'



Curve	Delta Angle	Radius	Arc	Tangent	Chord	Chord Bearing
1	10°45'08"	2043.48	383.48	192.31	382.92	N 84°21'56" E