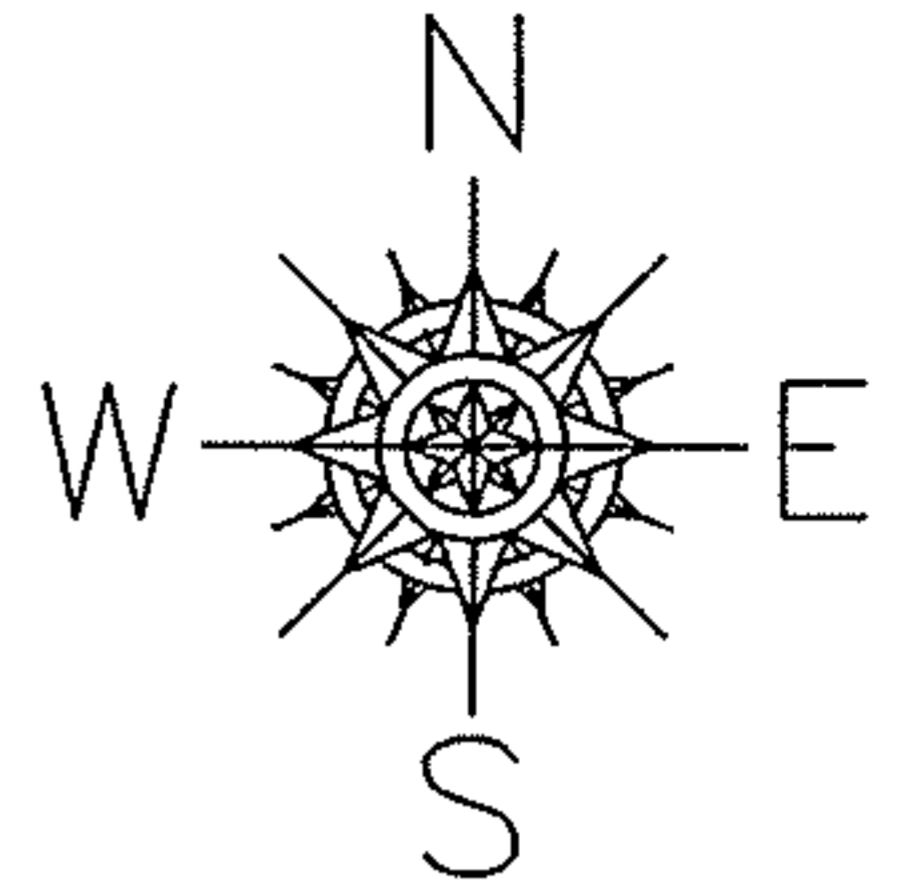


PARENT PARCEL: 02-01-003-262-002

CHILD PARCEL: 02-01-003-262-047, & -048

STARTING POINT: STONE MON. AT N.E. CORNER OF LOT NO. 33 &
SOUTH LINE OF PENFIELD HIGHLANDS

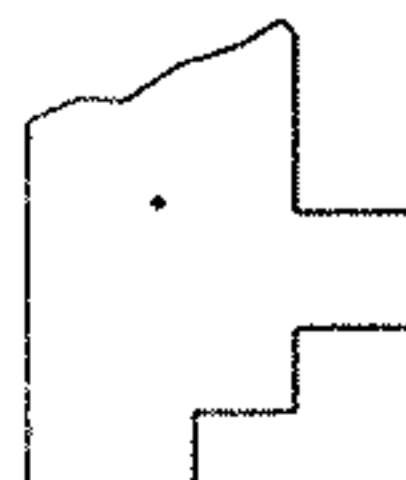
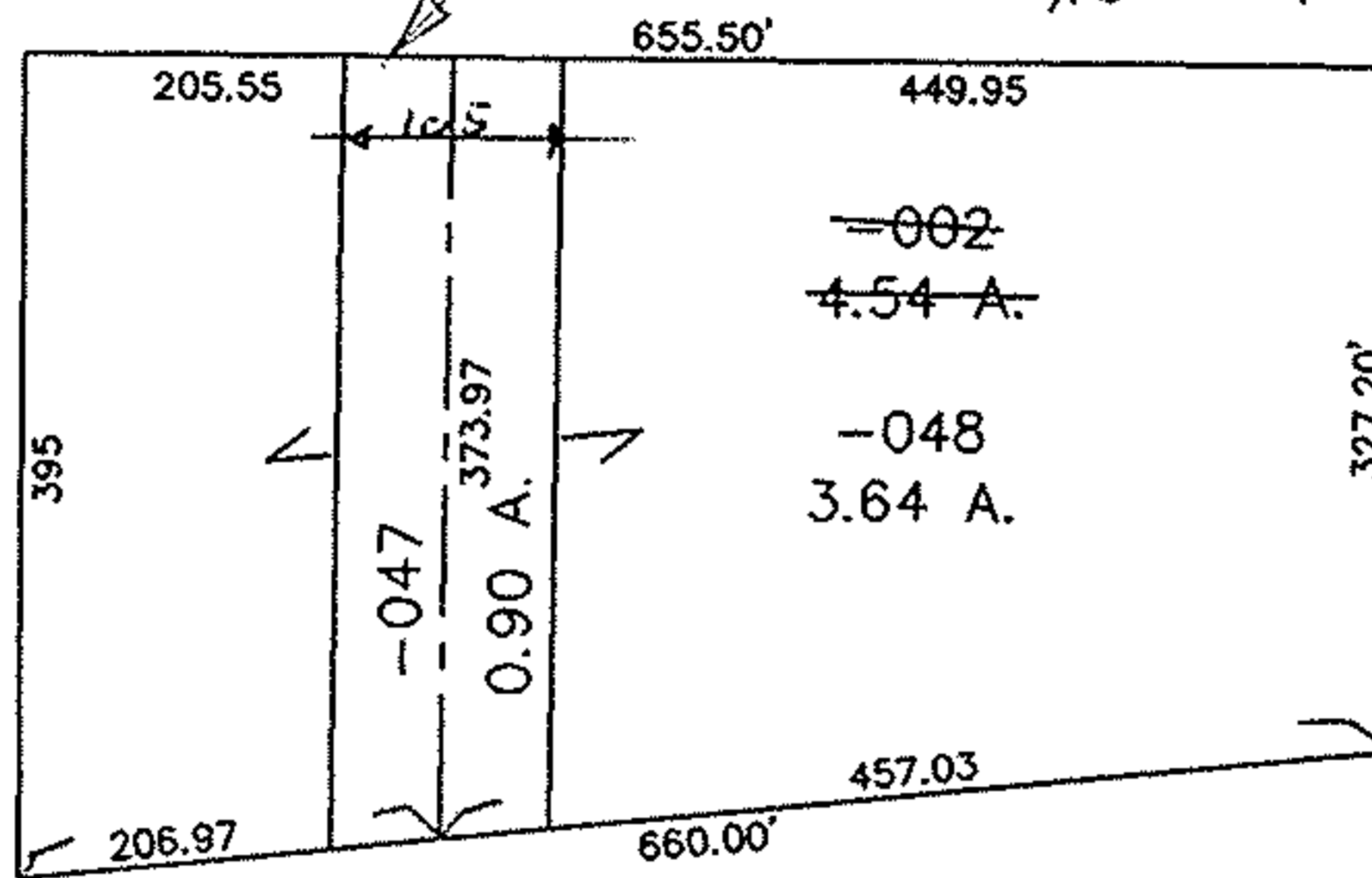
NO. 22549-D



P.P.N 02-01-003-262-002

THIS WAS AN EXCEPTION
TO -002 4.54 A.
ALSO APPEARS PER P.V. 22, PG. 66
AS A RIGHT-OF-WAY, BUT IT WAS
NEVER DEVELOPED.

SEE
P.V. 1075/115



SPLITS/DEEDS PROCESSED
LORAIN COUNTY TAX MAP DEPARTMENT
226 MIDDLE AVE. ELYRIA, OHIO

SURVEYED BY: LEWIS GOODALL CITY ENGINEER LORAIN
CLOSURE: x1A.
MAP PAGE(S): 02-01-003-K
APPROVED BY: TJS DATE: 06/18/98
SCALE: 1" = 200' PRIOR INSTRUMENT: P.V. 22/66