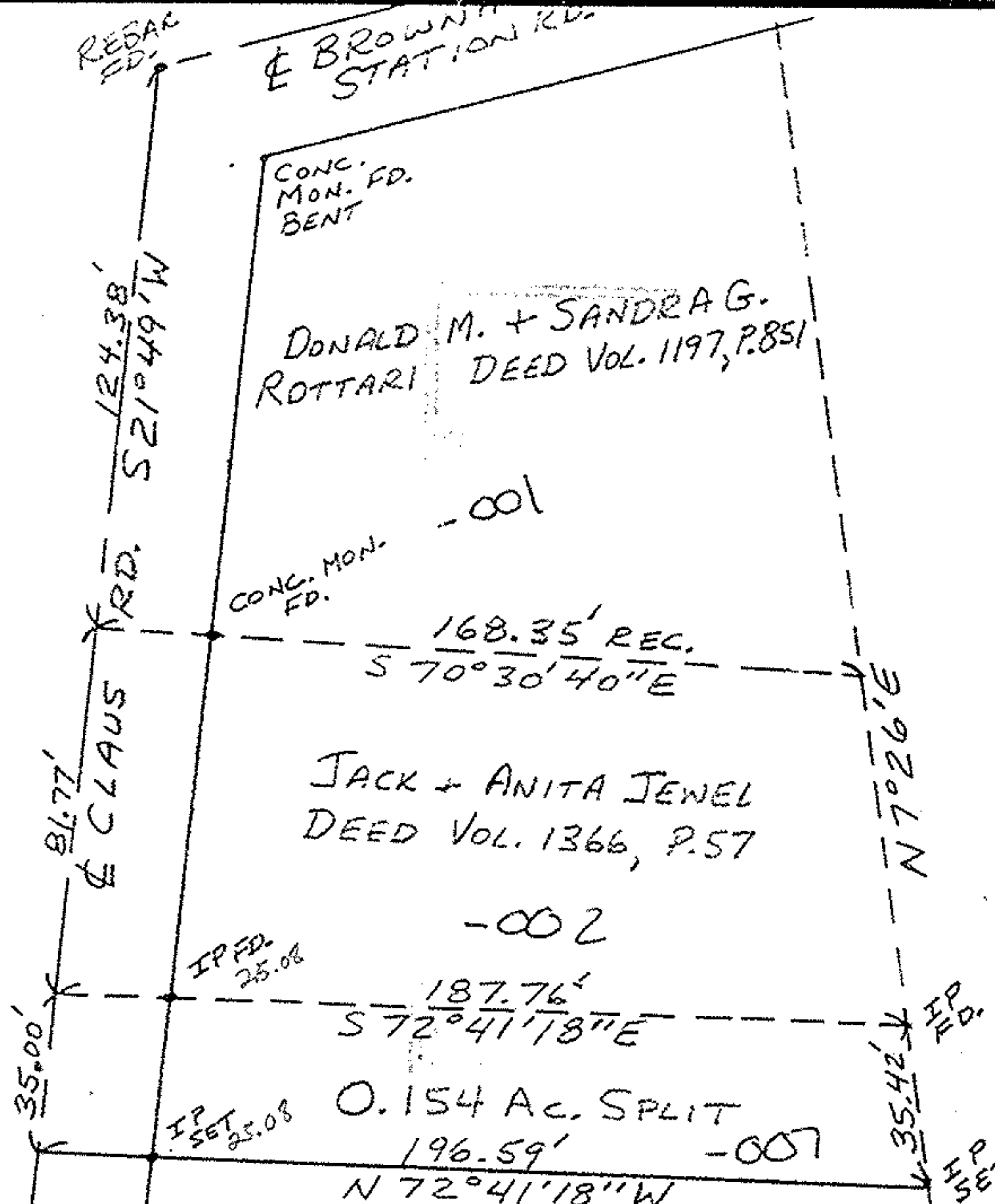


1-00-022-A

#16987

#16987

01-00-022-102



O.L.22

APPROVED
LORAIN CO.
MAP DEPT.

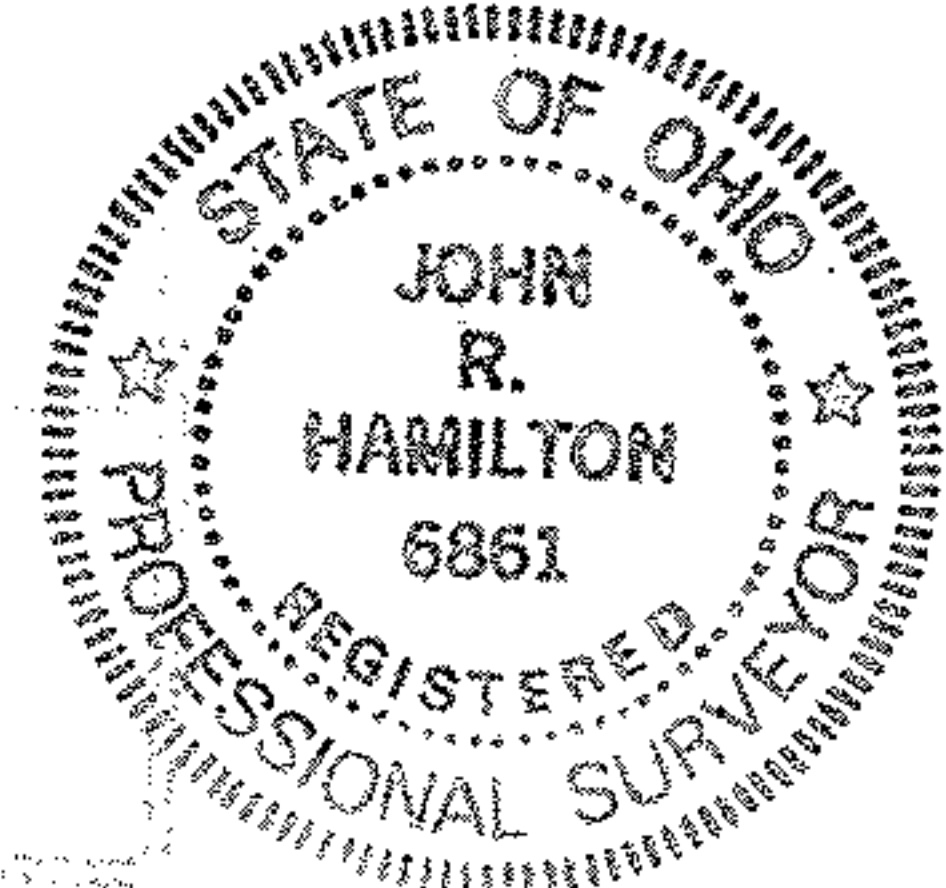
DATE 9.9.86

PAGE 1-00-022-A

BY T. McMan

VOID AFTER

NORTH
SCALE 1"=40'



MAP OF SURVEY OF 0.154 AC. SPLIT FOR JACK JEWEL - D.L.22 - BROWNHELM TWP. LORAIN COUNTY, OHIO

SCALE: 1"=40'	APPROVED BY:	DRAWN BY JRH
DATE: 8/17/86		REVISED
JOHN R. HAMILTON - REG. SURVEYOR #6861		
		DRAWING NUMBER

P.P.N 01-00-022-102-001,002,007