

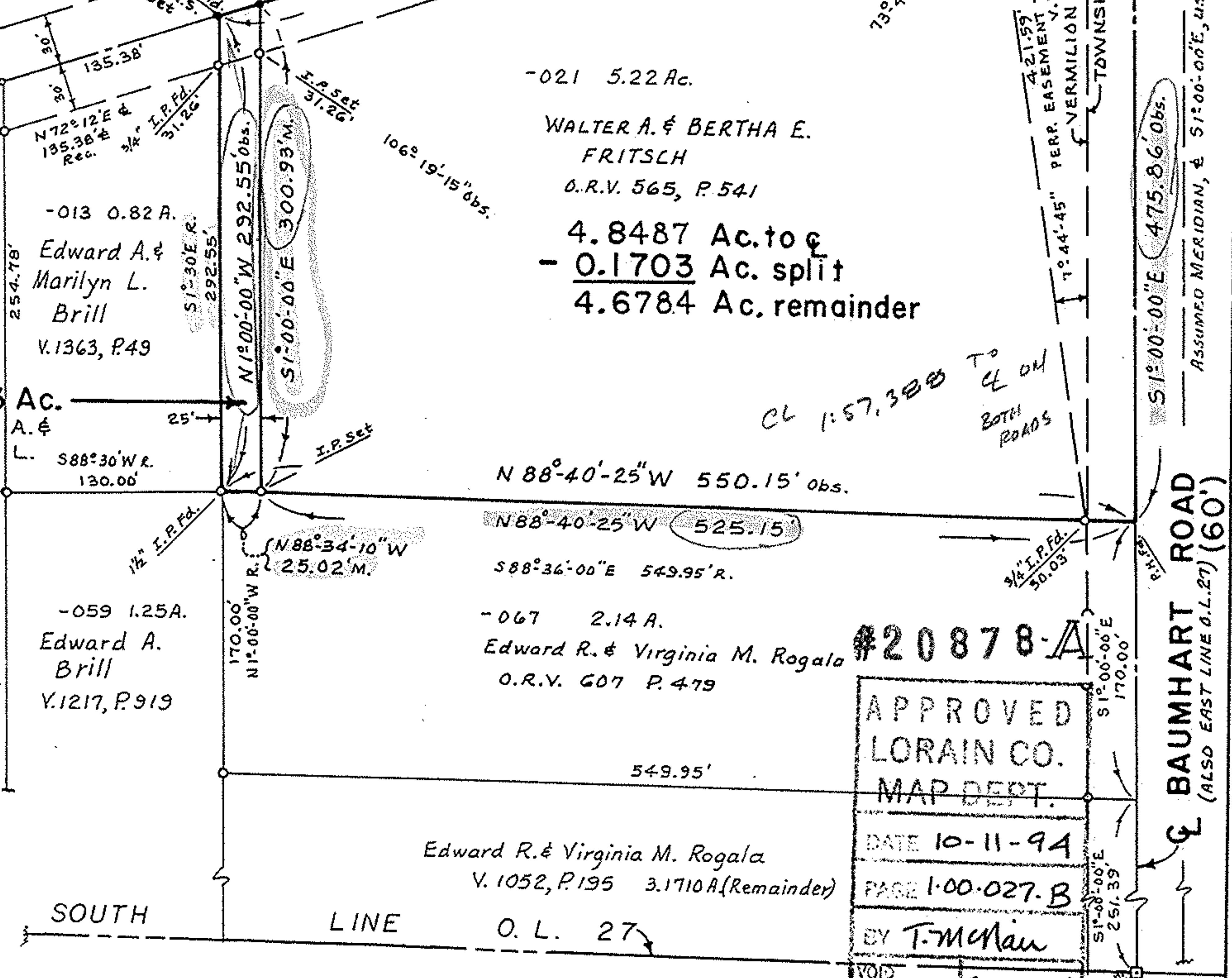
NORTH

ASSUMED
MERIDIAN



SCALE
1" = 100'

COOPER FOSTER PARK ROAD (60')
546.75



-021 5.22 Ac.
WALTER A. & BERTHA E. FRITSLCH
O.R.V. 565, P. 541
4.8487 Ac. to CL
- 0.1703 Ac. split
4.6784 Ac. remainder

-069
0.1703 Ac.
Edward Marilyn Brill
O.R.V. 786, P. 63

-013 0.82 A.
Edward A. & Marilyn L. Brill
V. 1363, P. 49

-059 1.25 A.
Edward A. Brill
V. 1217, P. 919

N 88°-40'-25" W 550.15' obs.
N 88°-40'-25" W 525.15'
S 88°-36'-00" E 549.95' R.

-067 2.14 A.
Edward R. & Virginia M. Rogala
O.R.V. 607 P. 479

Edward R. & Virginia M. Rogala
V. 1052, P. 195 3.1710 A (Remainder)

#20878-A
APPROVED
LORAIN CO.
MAP DEPT.
DATE 10-11-94
PAGE 1-00-027-B
BY T. McMan
VOID AFTER 20878-A

SOUTH LINE O. L. 27

NOTE: AREA TO CENTERLINES = 4.8487 ACRES, OF WHICH 0.3277 ACRES ARE OUTSIDE OF CITY
AREA OF ROAD RIGHT OF WAY = 0.9806 ACRES
NET = 3.8681 ACRES

MAP OF SURVEY MADE OF 4.8487 ACRES,
AND MAP OF SURVEY MADE OF 0.1703 ACRES
ACRES PART OF ORIG. BROWNHELM TWP. LOT
NO. 27 PARTLY IN VERMILION CITY LORAIN CO. THIS
Made at request of Ed Brill
By Charles P. Waryu, Registered Surveyor No. 5029
July 6, 1993

Charles P. Waryu
CHARLES P. WARYU, REG. SURVEYOR
NO. 5029