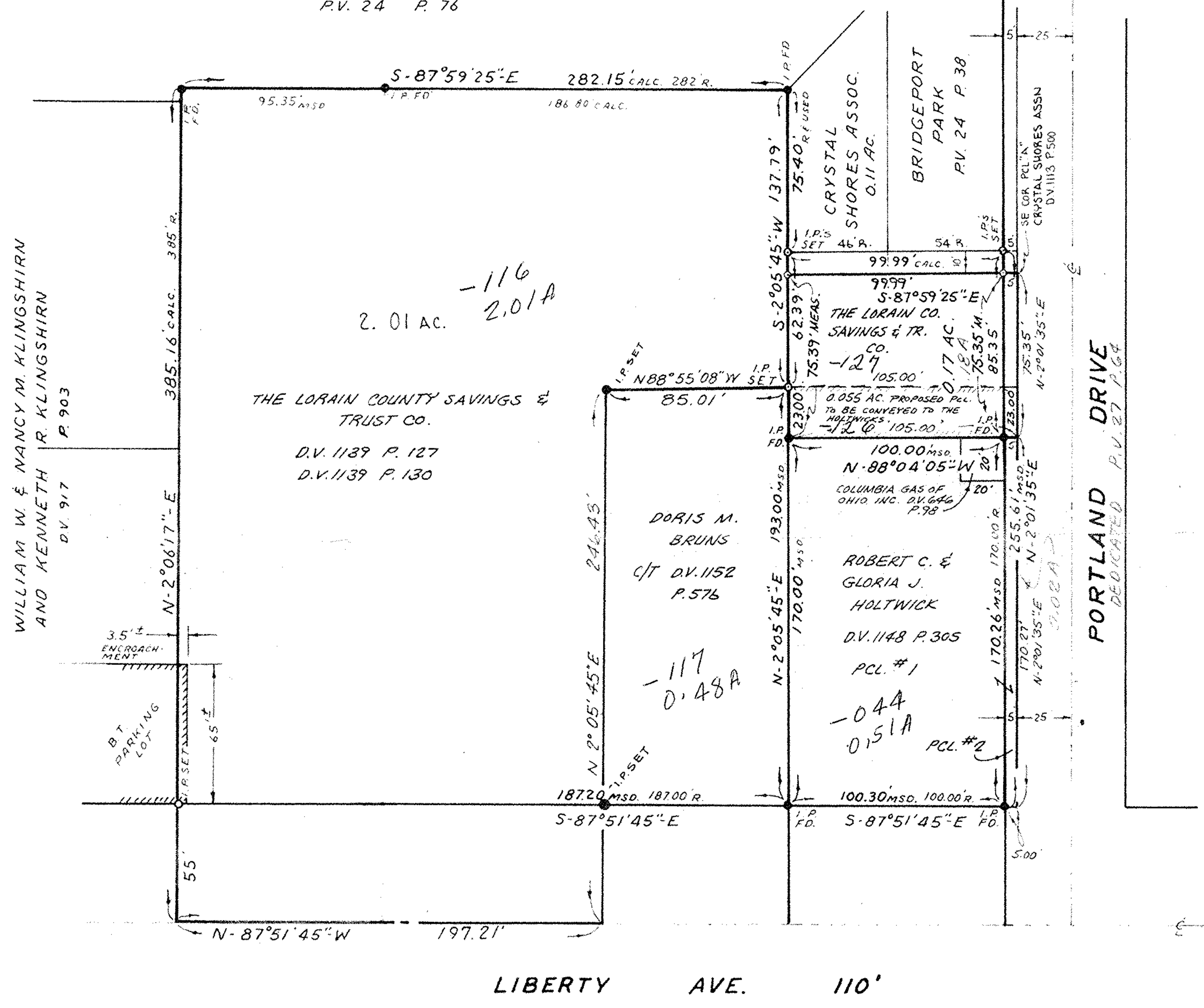


#12464

APPROVED  
LORAIN CO.  
MAP DEPT.  
DATE 2-15-79  
PAGE 1-00-001-A  
BY *Carroll*  
VOID  
AFTER 12464

AUD. REV'D CRYSTAL SHORES SUB. NO. 1  
P.V. 24 P. 76



01-00-001-103-126, 127, 116, 117, 044  
SE 12464  
11/17/75  
PAGE 01-00-001-A  
2  
Kleinoeder-Schmidt & Assoc

APPROVED  
LORAIN CO.  
MAP DEPT.

REV. 1-25-79: UPDATE OWNERSHIPS & SHOW 23' STRIP, N. OF HOLTWICK PCL.

PROJECT  
**SURVEY**  
PART OF ORIGINAL BROWNHELM TWP. LOT NO. 1  
CITY OF VERMILION, CO. OF LORAIN & STATE OF OHIO  
Prepared for:

Rev.  
11-2-75  
1-25-79  
Drawn by: D.S.  
Checked by:  
App. by:  
Scale: 1" = 50'  
Date: OCT. 17, 1975

**KLEINOEDER-SCHMIDT**  
and ASSOCIATES  
ENGINEERS — SURVEYORS — CONSULTANTS in LAND PLANNING  
ELYRIA - NORWALK - MEDINA OHIO

REFERENCES  
SHEET NO. 1 of 1  
JOB NO. 75-209