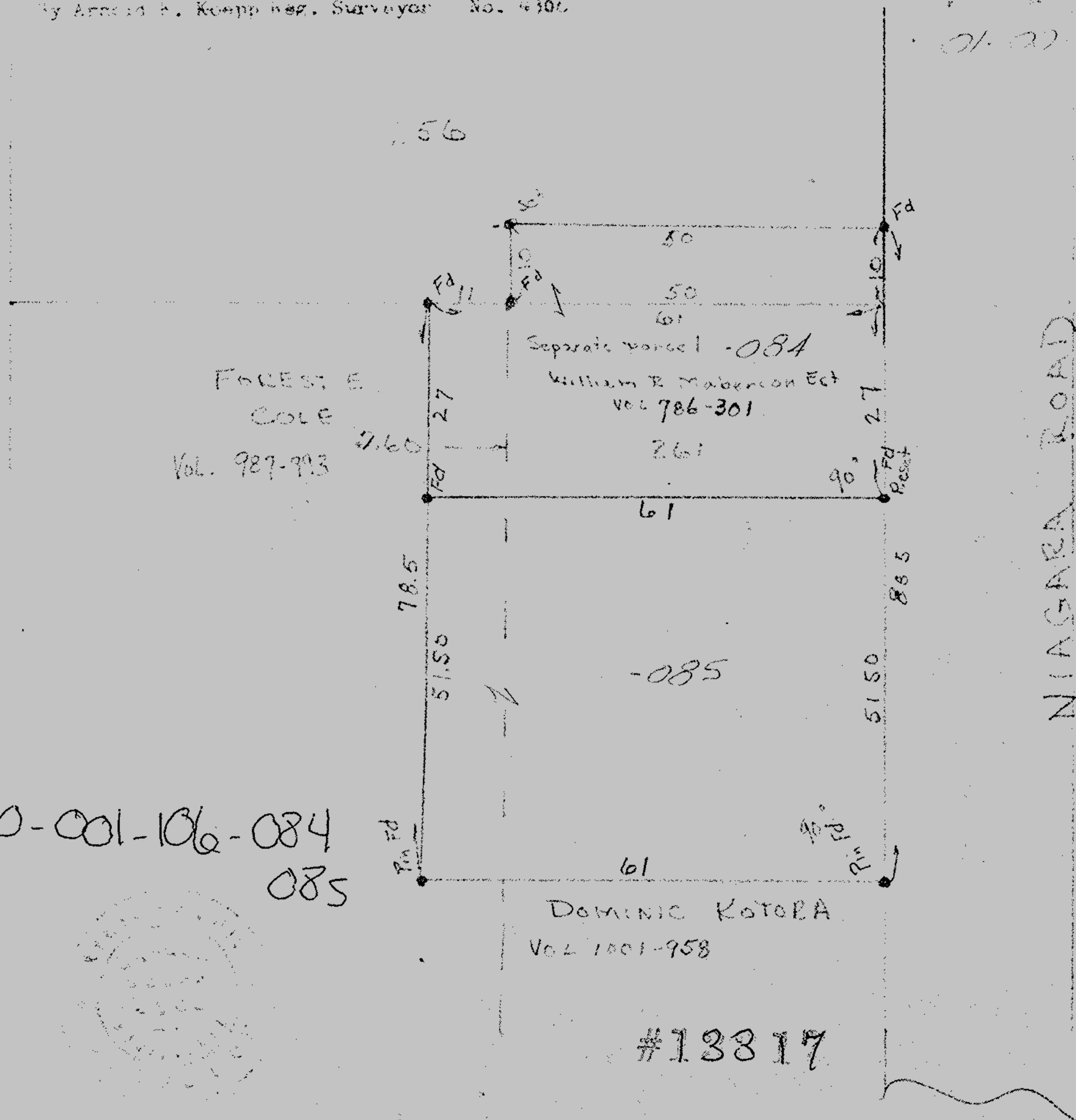
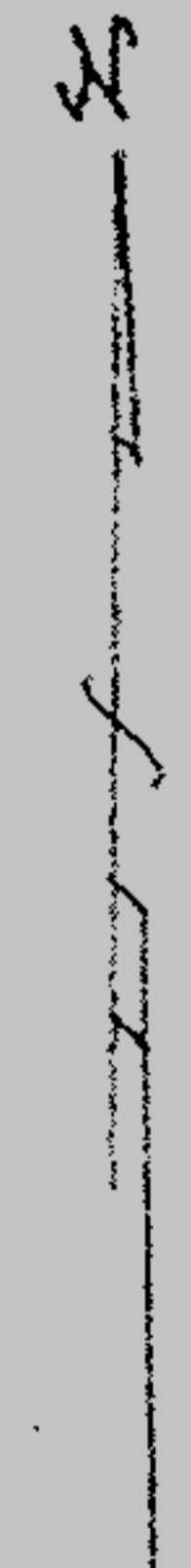


Map of part of ...
 Lorraine City Lorain Co. Ohio Scale 1" = 20' Nov. 19, 1979
 By Arnold E. Koepf Reg. Surveyor No. 4306

1-00-001-106-
 01-00-001-106-



#13317

APPROVED
 LORAIN CO.
 MAP DEPT.

DATE 12-31-79

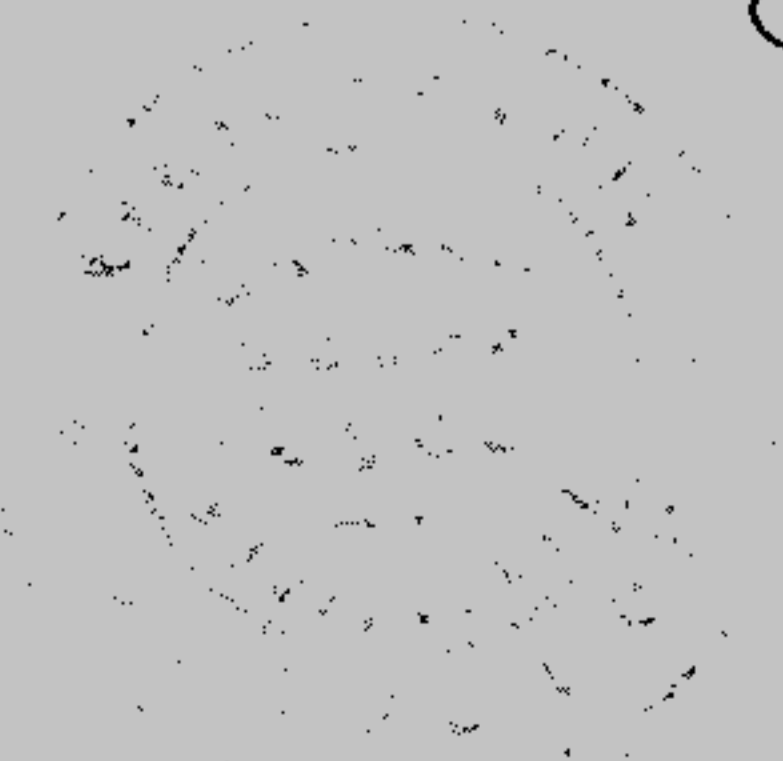
PAGE 1-00-001-B

BY *J. Koepf*

VOID AFTER 13317

N 14 1/2 W

01-00-001-106-084
 085



DOMINIC KOTORA
 VOL 1001-958

#13317