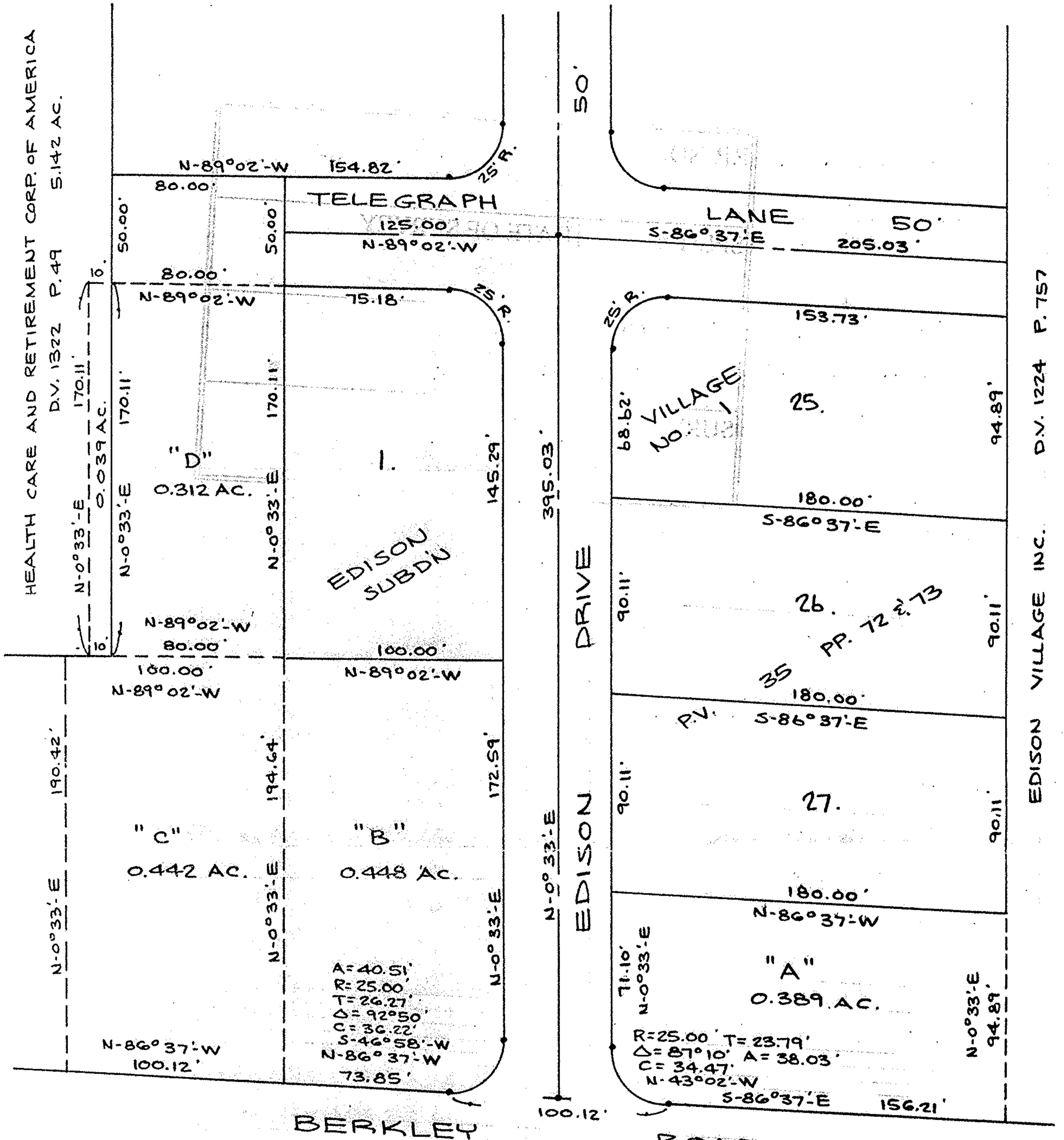


HEALTH CARE AND RETIREMENT CORP. OF AMERICA  
D.V. 1322 P. 49 5.142 AC.



EDISON VILLAGE INC. D.V. 1224 P. 757

#15359

APPROVED  
LORAIN CO.  
MAP DEPT.

DATE 11-16-83  
PAGE 1-00-001-B

BY T. McNamee  
VOID  
STFP

01-00-001-108-054

NORTH

PARCEL MAP

PART OF BROWNHELM TWP. ORIG. LOT 1  
CITY OF VERMILION COUNTY OF LORAIN  
STATE OF OHIO

SCALE: 1"=50' OCT. 7, 1983

PREPARED BY  
KLEINOEDER-SCHMIDT & ASSOC.  
CONSULTING ENGINEERS & SURVEYORS



*Robert E. Kleinoeder*