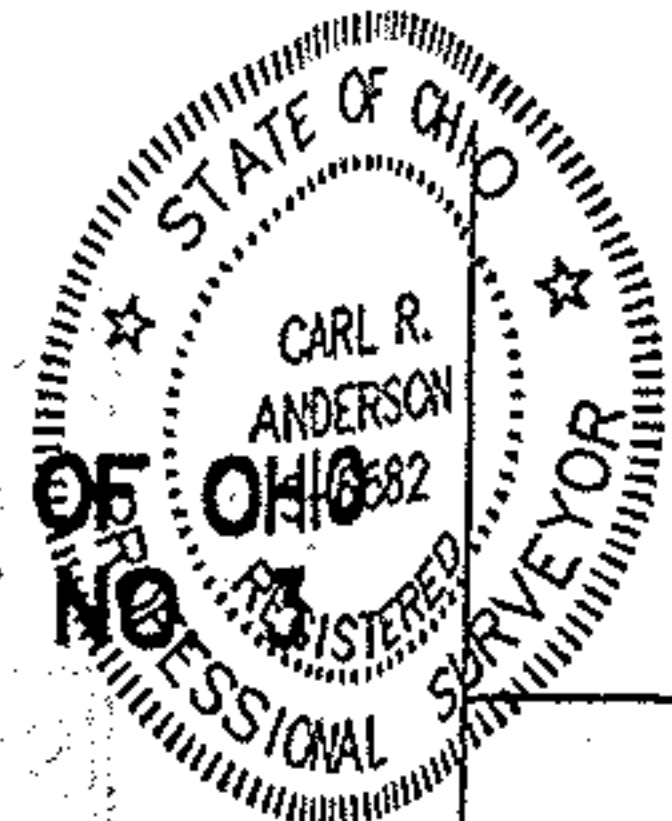


01-00-003-139-036, 040 thru 044

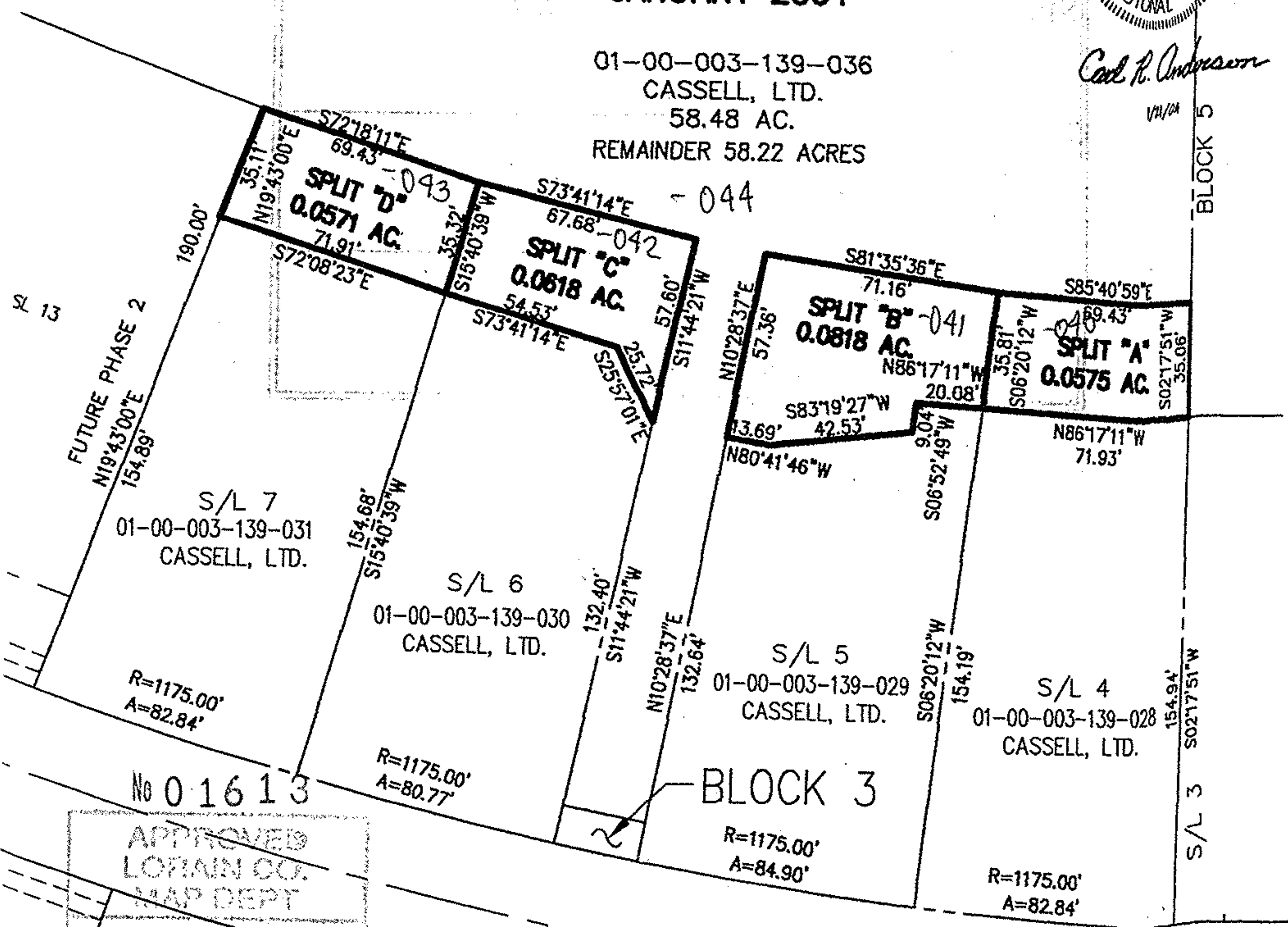
# BOUNDARY & LOT SPLIT

CITY OF VERMILION ~ LORAIN COUNTY ~ STATE OF OHIO  
PART OF ORIGINAL BROWNHELM TOWNSHIP LOT NO. 3  
JANUARY 2004



*Carl R. Anderson*  
1/21/04

01-00-003-139-036  
CASSELL, LTD.  
58.48 AC.  
REMAINDER 58.22 ACRES



No 01613

APPROVED  
LORAIN CO.  
MAP DEPT

DATE 3-19-04

PAGE 1-00-003-C

BY J Hatfield  
S/L 8  
#04-01613

NATURES PRESERVE SUBDIVISION NO. 1  
PLAT VOL. 67 PG. 41

**HAYWOOD**  
Civil Engineering & Land Surveying  
"Committed to Service and Quality"

630 Cleveland Street Office: (440) 365-9831  
Elyria, Ohio 44035 Fax: (440) 365-3426  
www.haywoodcivilengineering.com

PT.  
BLOCK 1

PT.  
BLOCK 1



SCALE: 1 in. = 50 ft.