

03-00-104-101-026, 027

SENECA AVENUE

PARCEL MAP OF PART OF SHEFFIELD TOWNSHIP

ORIGINAL LOTS 104 & 105

TOWNSHIP OF SHEFFIELD COUNTY OF LORAIN STATE OF OHIO

SCALE: 1" = 80'

APRIL 16, 1981

PREPARED BY REV. 10-2-86 REV. 6-15-87

KLEINOEDER-SCHMIDT & ASSOC. CONSULTING ENGINEERS & SURVEYORS

REV. 8-22-88 REV. 10-01-90 REV. 12-11-90 REV. 12-14-90

EVANGELICAL LUTHERAN CHURCH OF OUR SAVIOR OF THE OHIO SYNOD D.V. 928 P. 885 (10 AC.) 9.73 AC.

3-00-104-101-026

CITY OF LORAIN

(CORP. LINE) (TOWNSHIP OF SHEFFIELD)

19229

APPROVED LORAIN CO. MAP DEPT.

DATE 12-24-90

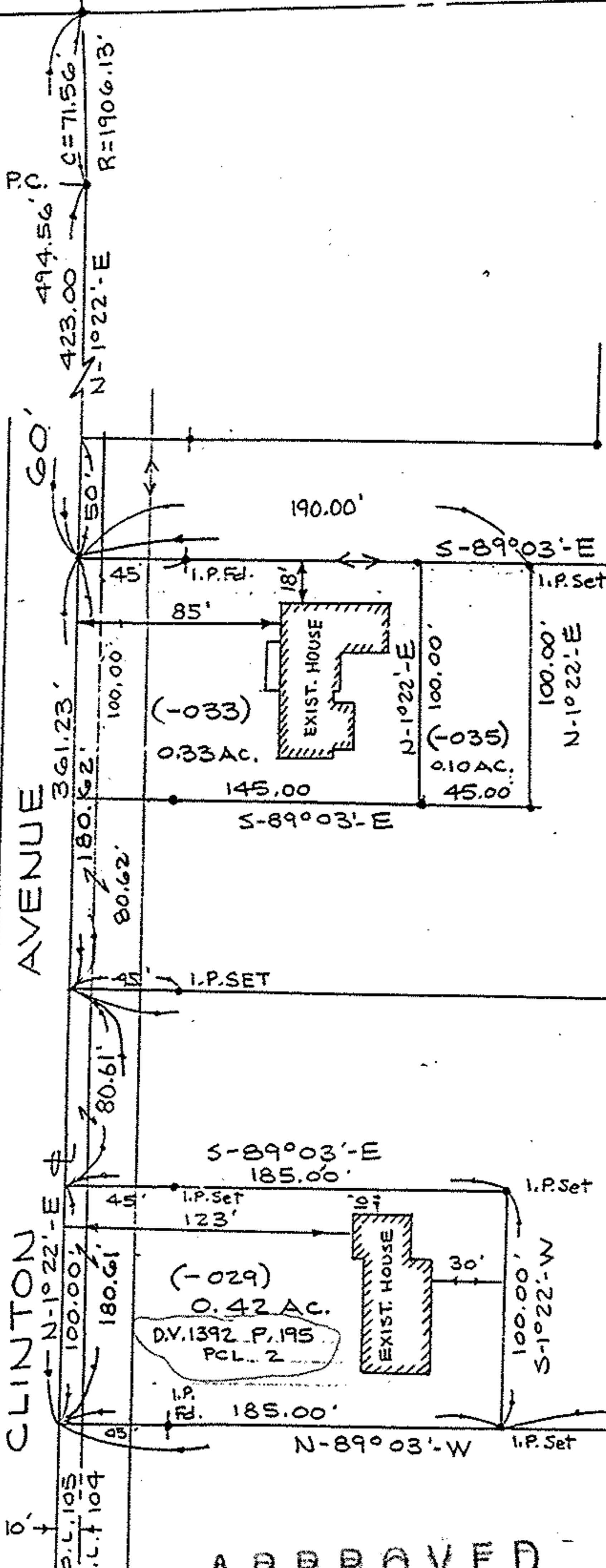
PAGE 3-00104-A

BY CAROLYN FRANCIS

AFTER # 19229

(LAFAYETTE BLVD.)

CLINTON AVENUE



TIMMY L. & CAROLYN ROWE D.V. 1392 P. 195 7.05 AC.

D.V. 1392 P. 195 PCL. 1 (6.65 AC.)

FERDINAND & NILDA ROSADO 3-00-104-101-027 O.R.V. 110 P. 948 3.47 AC.

3-00-104-101-010 7.77 AC. STE. MARY'S UKRANIAN ORTHODOX CHURCH D.V. 756 P. 419

3-00-104-101-021 3.95 AC. HELEN POPOVICH D.V. 644 P. 498

MINIMUM LOT REQ. PER JOS. DLUGOSZ - SHEFFIELD TWP. BUILDING INSPECTOR: (233-5332) FRONTAGE - 60' AREA - 6000 SQ. FT. SIDETYARDS - 5' & 10' REAR YARD - 5'

APPROVED AS TO DESCRIPTION ONLY

Date 12-17-90 City of Lorain Per Kimberley Hoskin Engineering Dept.

APPROVED BY THE LORAIN CITY PLANNING COMMISSION NO PLAT REQUIRED

SECRETARY LORAIN CITY PLANNING COMMISSION

81-22