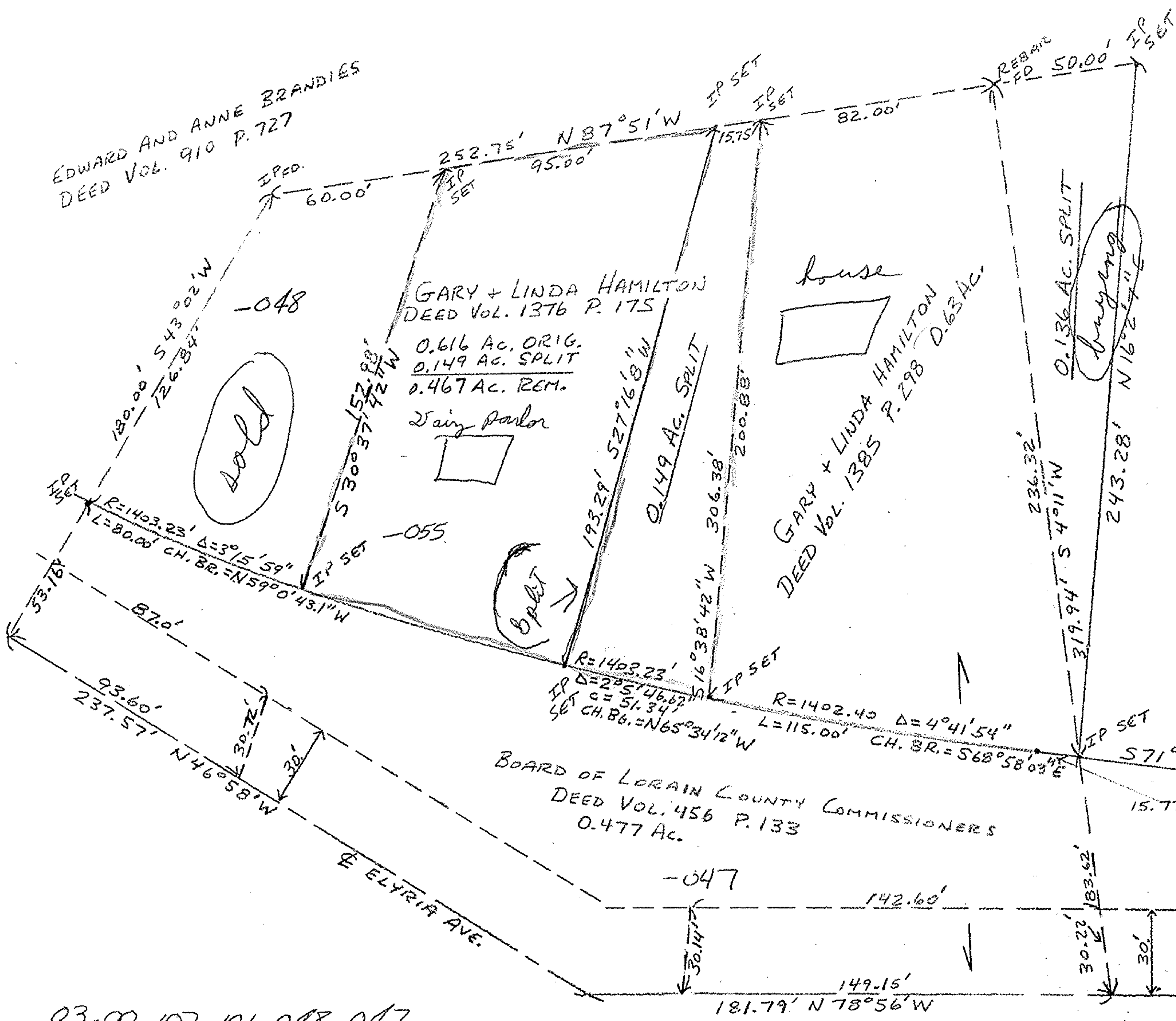


EDWARD AND ANNE BRANDIES
DEED VOL. 910 P. 727

NORTH
SCALE 1"=40'



#18253

APPROVED
LORAIN CO.
MAP DEPT.
DATE 12-13-88
PAGE 3-00-107A
BY Carol Francis
VOID AFTER #18253

ELIZABETH PRATT
DEED VOL. 1090 P. 840
2.43 AC. ORIG.
0.136 AC. SPLIT
2.294 AC. REM.



BOARD OF LORAIN COUNTY COMMISSIONERS
DEED VOL. 456 P. 133
0.477 AC.

MAP OF SURVEY FOR GARY HAMILTON SHEFFIELD TOWNSHIP - D. L. 107		
SCALE: 1"=40'	APPROVED BY:	DRAWN BY: JRH
DATE: 9/5/85		REVISED: 10/15/85
JOHN R. HAMILTON - REG. SURV. #6861		OLD R/W 10/23/86 W. SPLIT 8/14/88 ADD
DRAWING NUMBER		PRATT SPLIT + 0.149 AC. SPLIT

03-00-107-101-048, 047