

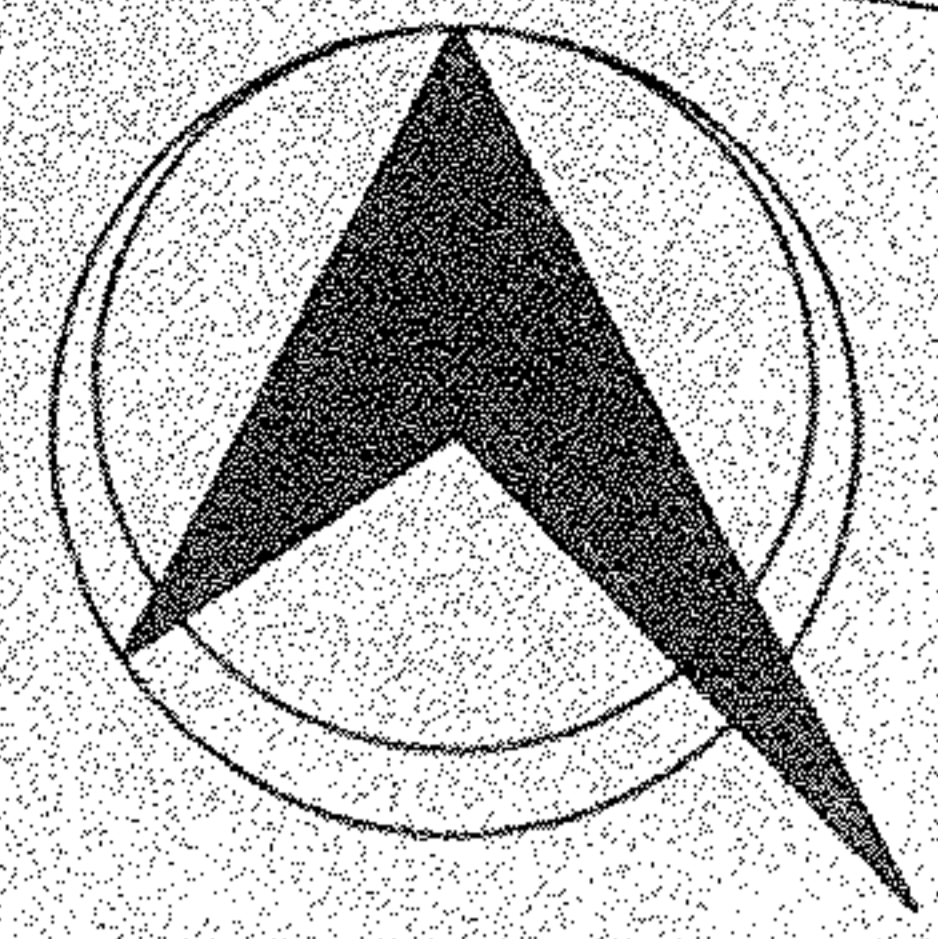
MEYOR
 Thomas J. Neff, Jr.

03-00-006-000-007
 Harry R. and Christo E. Gerent
 Vol. 1231 Pg. 239 L.C.D.R.

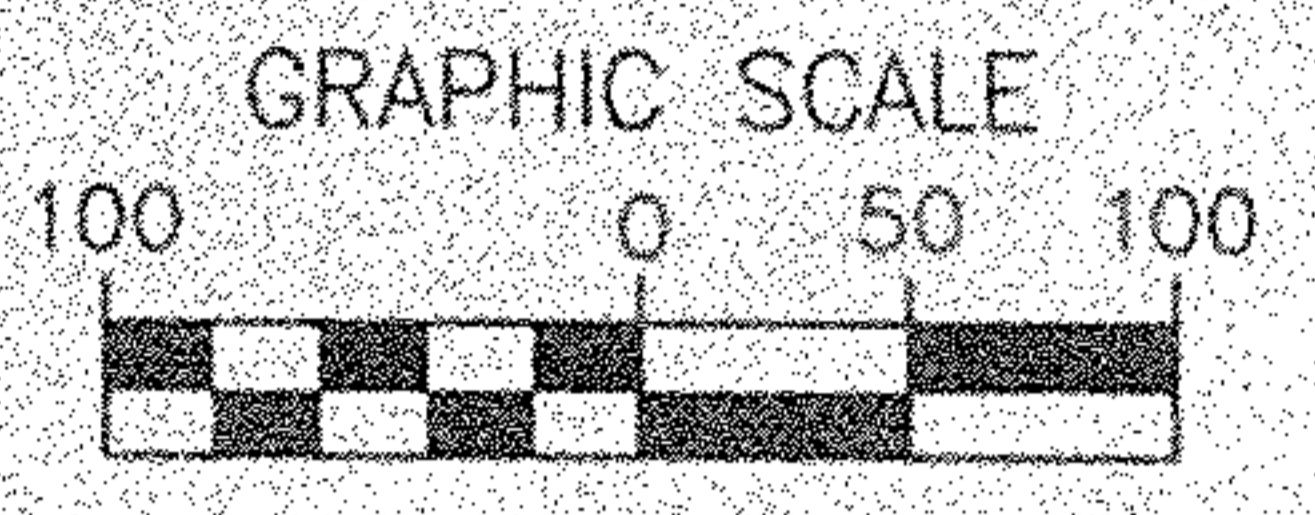
03-00-005-000-050
 MeloKofe Corporation
 O.R. Vol. 166 Pg. 273 L.C.D.R.

03-00-005-000-049
 Belden Village Lighting Center, Inc.
 O.R. Vol. 1453 Pg. 456 L.C.D.R.

03-00-005-000-051
 Kevin B. and Eleanor R. McLaughlin
 O.R. Vol. 1480 Pg. 955 L.C.D.R.



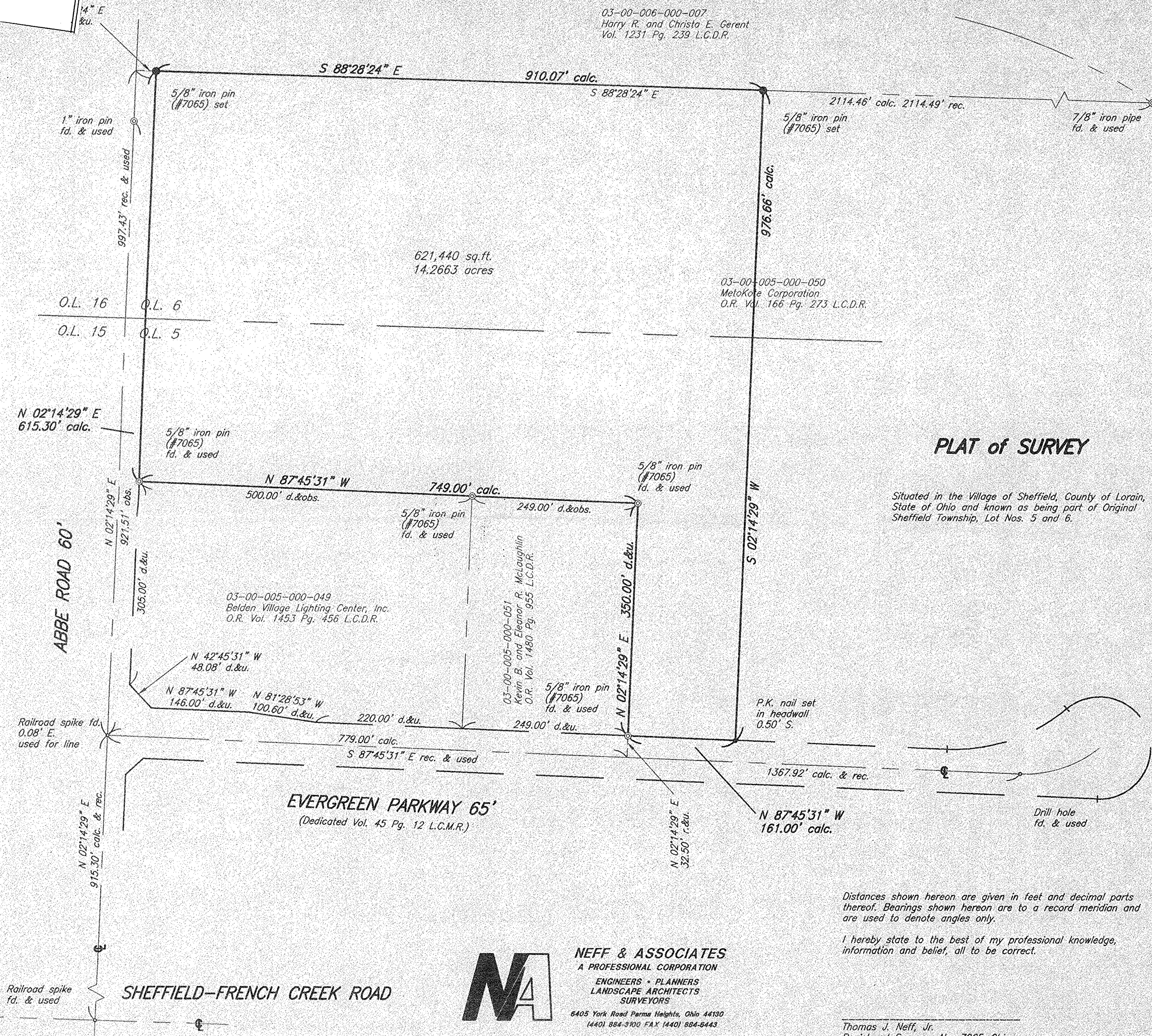
NORTH



1 INCH = 100 FT.

Date: November, 1997
 File No. 11349

#22389
 APPROVED
 LORAIN CO.
 MAP DEPT
 DATE 12-19-97
 3-00-005-A
 PAGE 3-00-006-A
 BY K. COLBERT
 #22389



PLAT of SURVEY

Situated in the Village of Sheffield, County of Lorain, State of Ohio and known as being part of Original Sheffield Township, Lot Nos. 5 and 6.

Distances shown hereon are given in feet and decimal parts thereof. Bearings shown hereon are to a record meridian and are used to denote angles only.

I hereby state to the best of my professional knowledge, information and belief, all to be correct.



NEFF & ASSOCIATES
 A PROFESSIONAL CORPORATION
 ENGINEERS • PLANNERS
 LANDSCAPE ARCHITECTS
 SURVEYORS

6405 York Road Parma Heights, Ohio 44130
 (440) 884-3100 FAX (440) 884-8443

Thomas J. Neff, Jr.
 Registered Surveyor No. 7065-Ohio