

Map of Part of D.L. 99-100 Ambient Top Ambient City
Lorain Co Ohio Scale 1"=200 April 8-1976
By Donald F. Koepf Reg. Surveyor No. 4306

30' Plw Pony Trail
S 518.10 S 14.34° E
S 2527.40 E
1007.40 Abs
1001.60 E

958.00 R 953.61
S 76° 57' 40" W

Oberlin College
V 557-208

PER PHONE CALL
A. KOEPP
6/4/87
6:02

John & Eleanor Starin
Vol. 312-437
P. 133-110
448 447

890-
3.06 AC ±
NS 1.11 W
449.00

only part
of
A-5
A-5
A-5

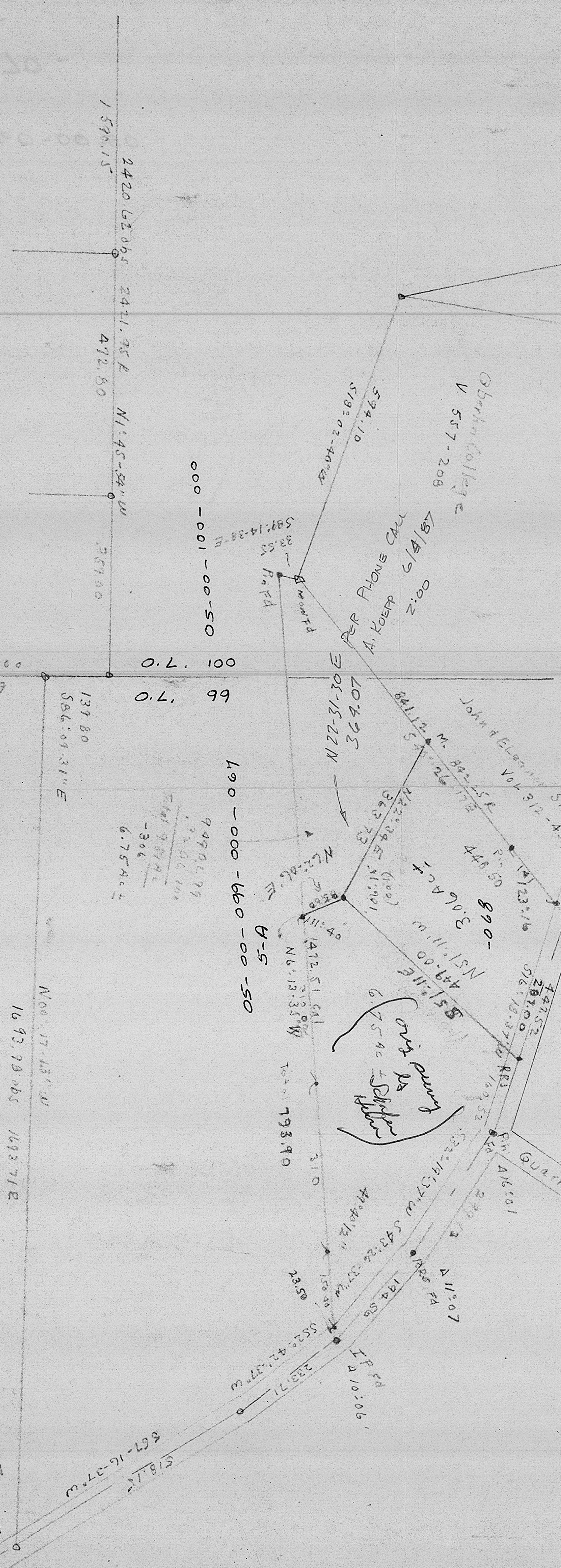
QUARRY RD

2901.90-00-660-00-50

5-A
2/2/78

#17460

APPROVED LORAIN CO. MAP DEPT.	
DATE 6/18/87	
PAGE 5-A	
BY T. McMain	
VOID AFTER	



1117-38
4600
N 68° 07' 54" E