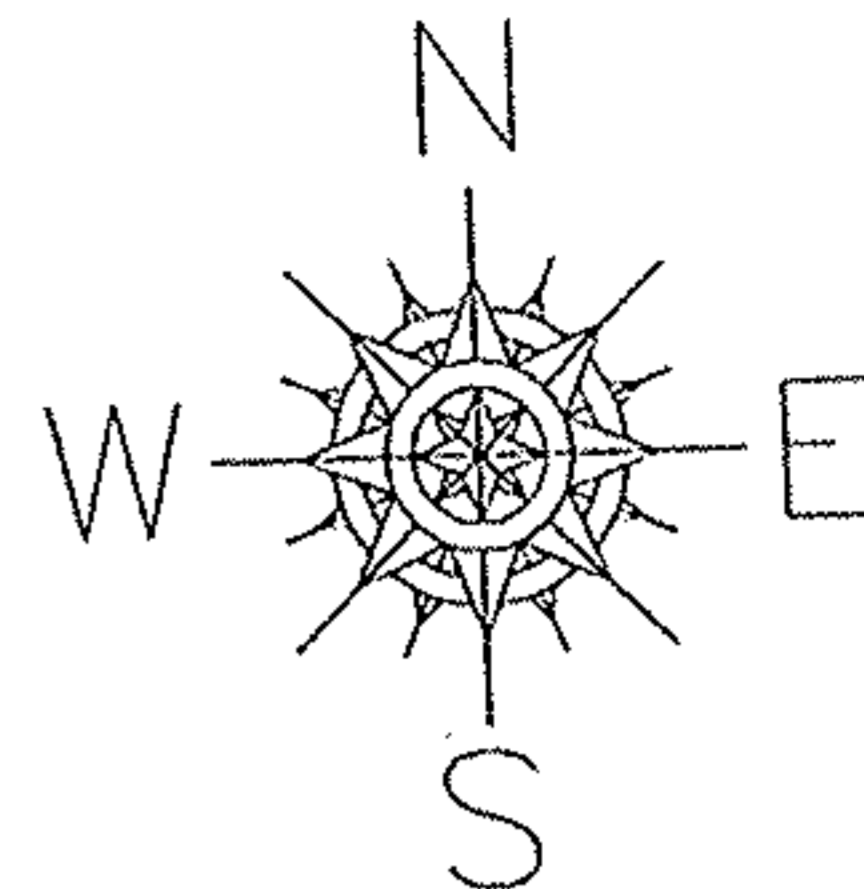
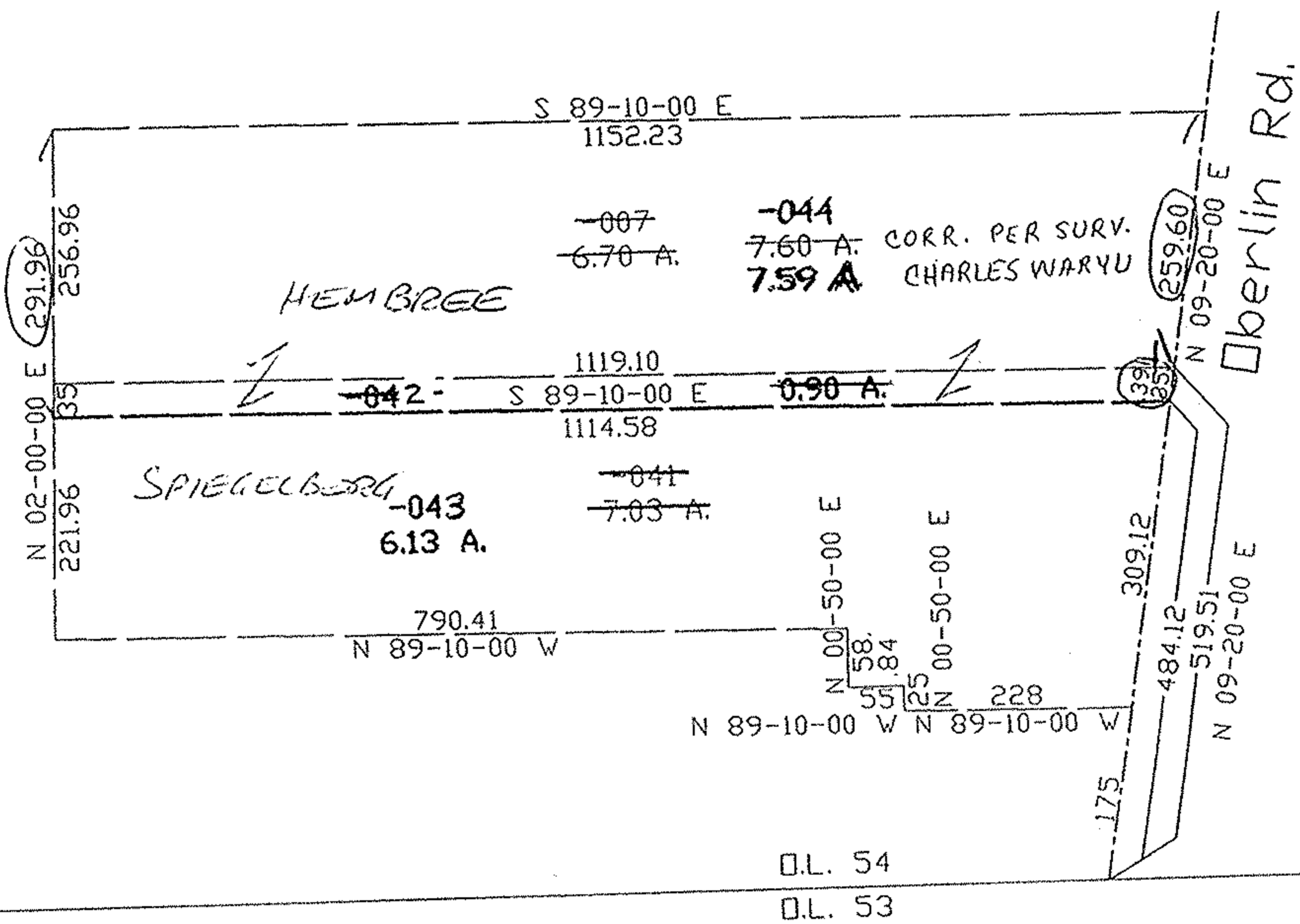


NO. 22454

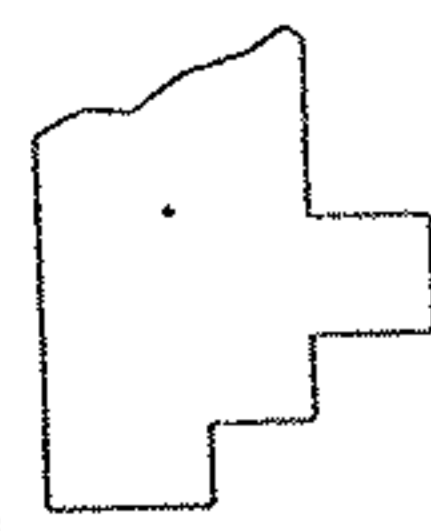
PARENT PARCEL: 05-00-054-000-007, 041
CHILD PARCEL: 05-00-054-000-042, 043, 044
STARTING POINT: cl. of Oberlin Rd. & s. line of O.L. 54



Prior instrument:
-007 1049/1216
-041 OR 1216/336



map 5-G



SPLITS/DEEDS PROCESSED
LORAIN COUNTY TAX MAP DEPARTMENT
226 MIDDLE AVE. ELYRIA, OHIO

SURVEYED BY: Charles P. Waryu
CLOSURE: 0.53:10,000
MAP PAGE(S): 5-6
APPROVED BY: kac DATE: 03/11/98
SCALE: 1" = 200 PRIOR INSTRUMENT: OR 1216/336