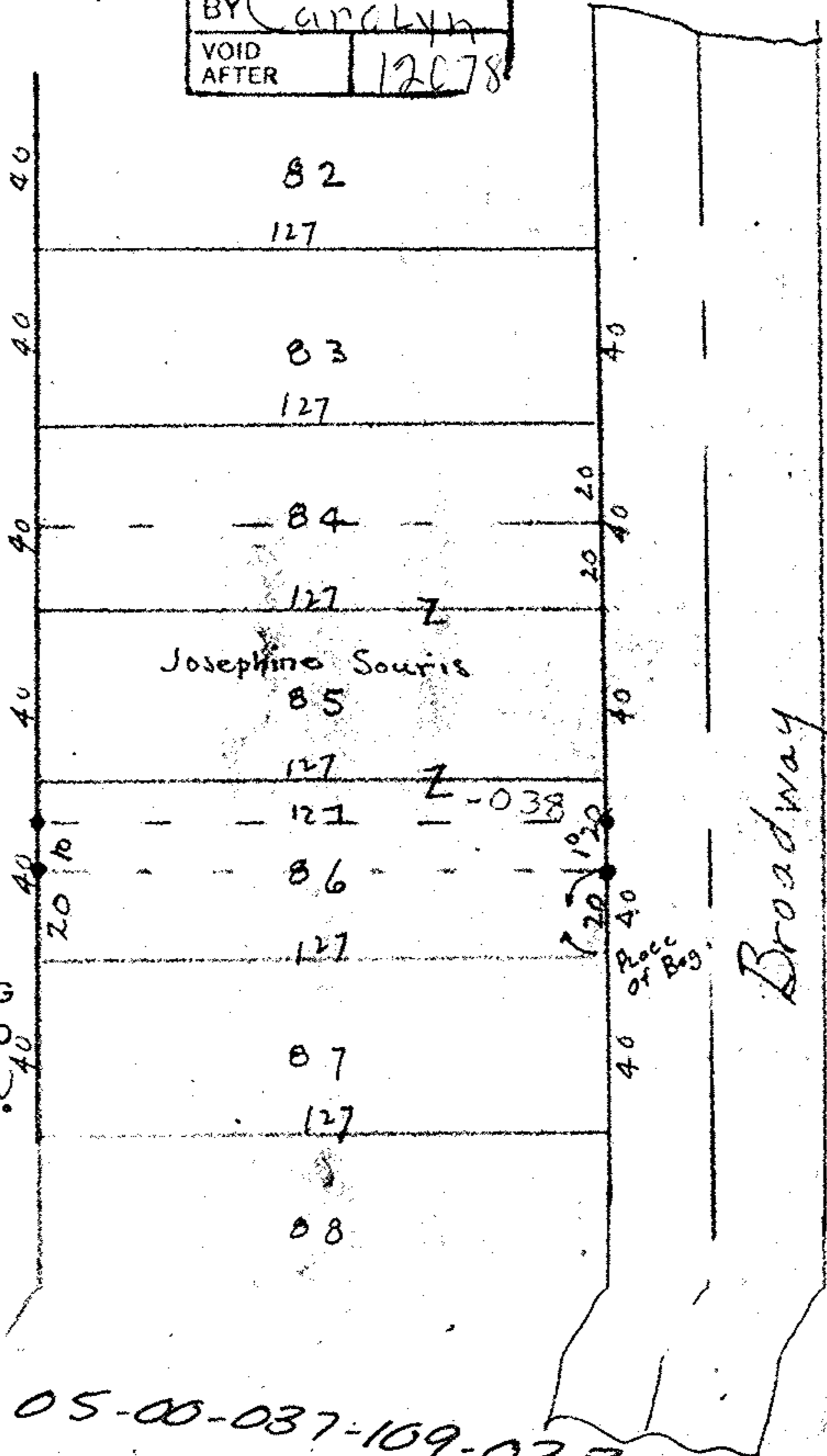


Map of Part of B. E. Taylors Addition Vol. 7 Page 4 Lorain Co. Plats
 Scale 1" = 50' July 14, 1928
 By Arnold Koepf Registered Surveyor No. 4306

#12078

| | |
|-------------------------------------|-------------|
| APPROVED LORAIN CO. MAP DEPT. | |
| DATE | 9-21-78 |
| PAGE | 5-00-037-13 |
| BY | Caroline |
| VOID AFTER | 12078 |

05-00-037-109-



APPROVED BY THE LORAIN CITY PLANNING
 COMMISSION..... NO PLAT REQUIRED

Long B. Rodgers RW
 SECRETARY LORAIN CITY PLANNING COMMISSION

APPROVED
 as to description only

Patrick A. McEgan

05-00-037-109-038

5-00-037-109-