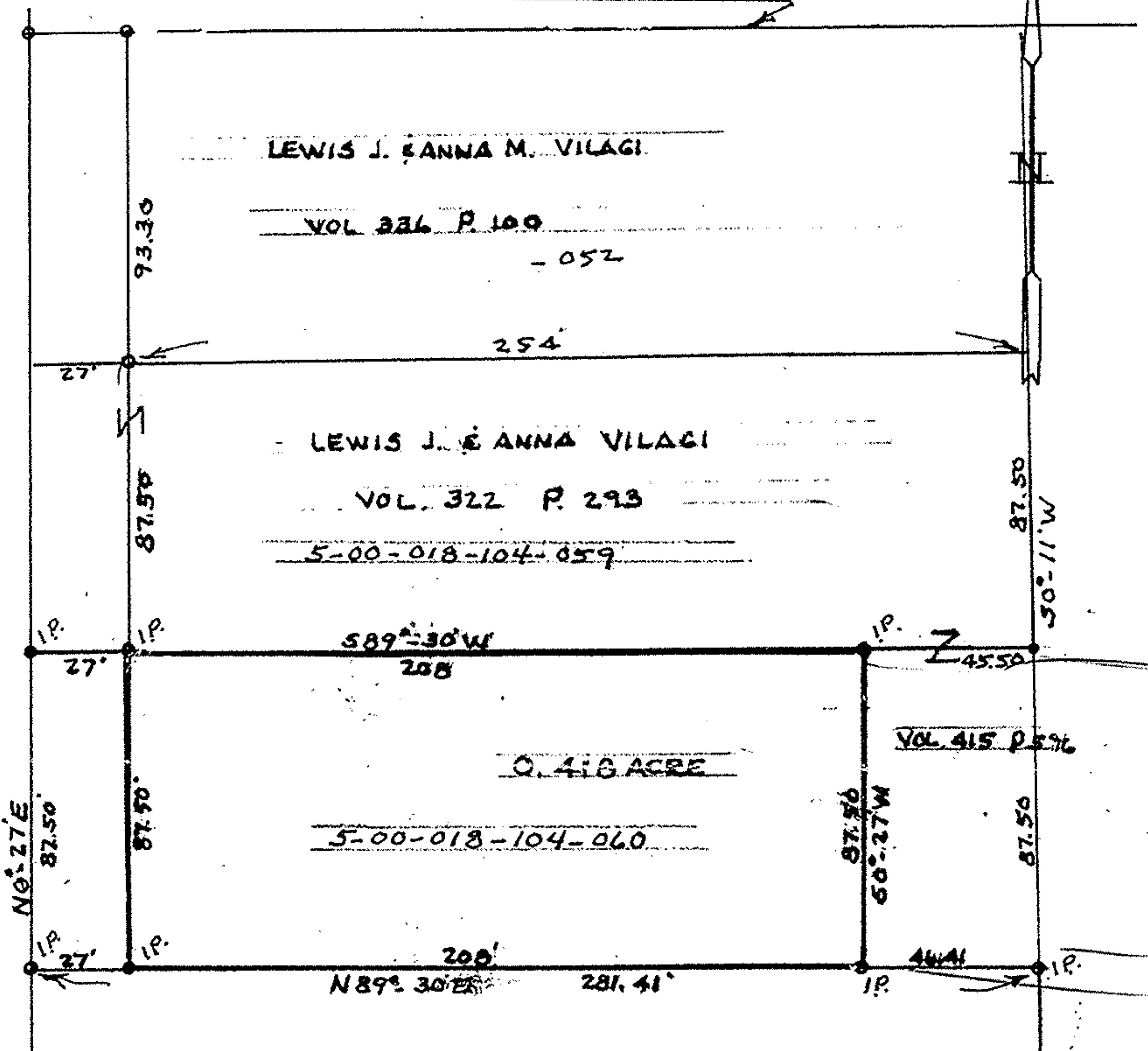


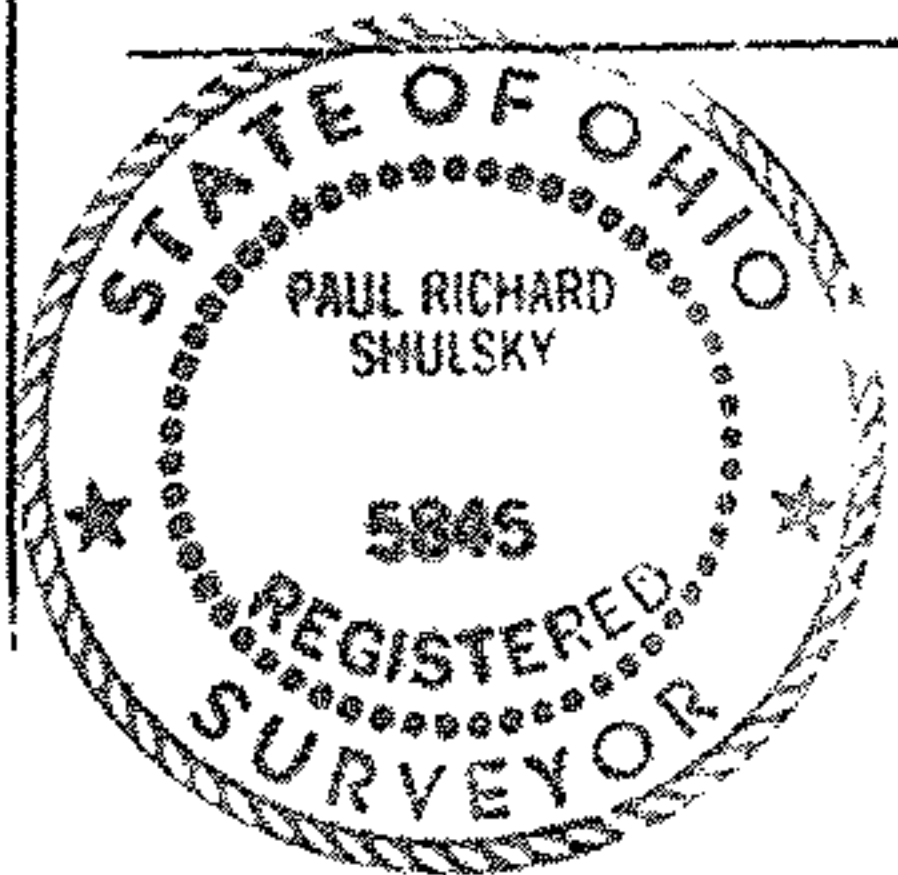
05-018-104-059, 052, 060

N ORIGINAL LOT 18



1/4 5 05-00-018-104
 1/4 4
 20072
 1/4 2
 LONG ST.
 1/4 1
 05-00-018-B

20072
 APPROVED
 LORAIN CO.
 MAP DEPT.
 DATE 7-2-72
 PAGE 05-00-018-B
 CAROLYN
 BY FRANCIS
 VOID AFTER # 20072



1/4 7
 1/4 6
 LOT SPLIT SURVEY
 O.L. 18 - AMHERST TWP.
 LORAIN COUNTY AMHERST OHIO
 PART OF PP 5-00-018-104-060
 TOTAL ACREAGE 0.510 ACRE
 SPLIT - 0.418 ACRE
 RESIDUE - 0.092 ACRE

1/4 1 to 1/4 7 INCL. IN
 PLAT OF LONG ST. EXTENSION
 VOL. 21 P. 36