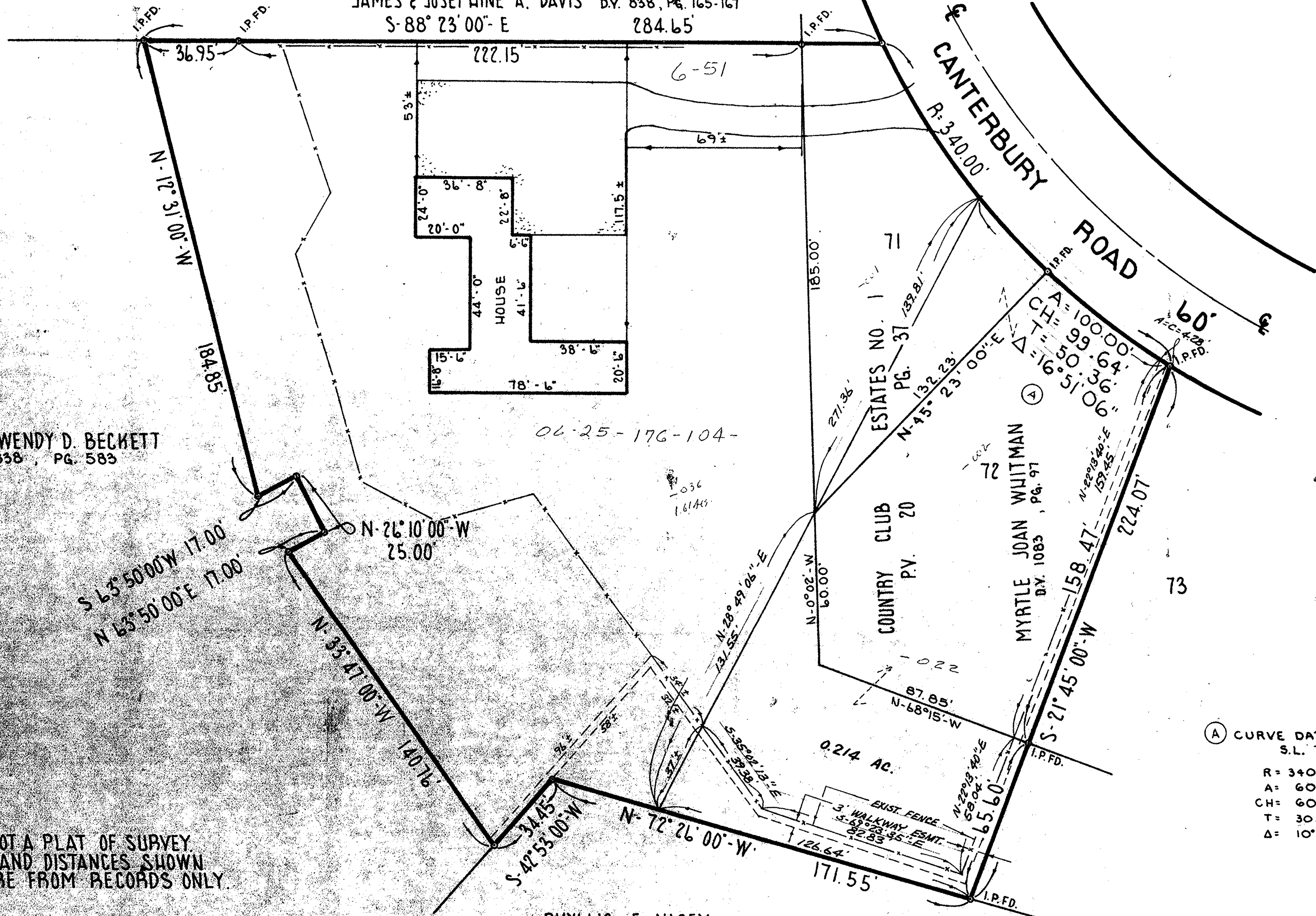


JAMES & JOSEPHINE A. DAVIS D.Y. 838, PG. 165-167
 S-88° 23' 00" E 284.65'



JOHN D. & WENDY D. BECKETT
 D.Y. 838, PG. 583

(A) CURVE DATA FOR S.L. 72
 R = 340.00'
 A = 60.08'
 CH = 60.00'
 T = 30.11'
 Δ = 10° 07' 27"

NOTE: THIS IS NOT A PLAT OF SURVEY
 BEARINGS AND DISTANCES SHOWN
 HEREON ARE FROM RECORDS ONLY.

PHYLLIS F. NACEY
 D.Y. 791, PG. 36

PROJECT
SURVEY AND LOCATION
 OF PART OF
 ORIGINAL ELYRIA TOWNSHIP LOTS NOS. 175-176, EAST OF RIVER
 CITY OF ELYRIA COUNTY OF LOBAIN STATE OF OHIO

Prepared for: WORTH FAUVER SR.

Rev.	5-28-76
Drawn by:	S.T.E.
Checked by:	
App. by:	
Scale:	1" = 30'
Date:	8/1/75

KLEINOEDER-SCHMIDT
and ASSOCIATES

ENGINEERS — SURVEYORS — CONSULTANTS IN LAND PLANNING

ELYRIA - NORWALK - MEDINA OHIO

REFERENCES

SHEET NO.
 1 of 1

JOB NO.
 75-140

6-51
 06-25-176-175-176