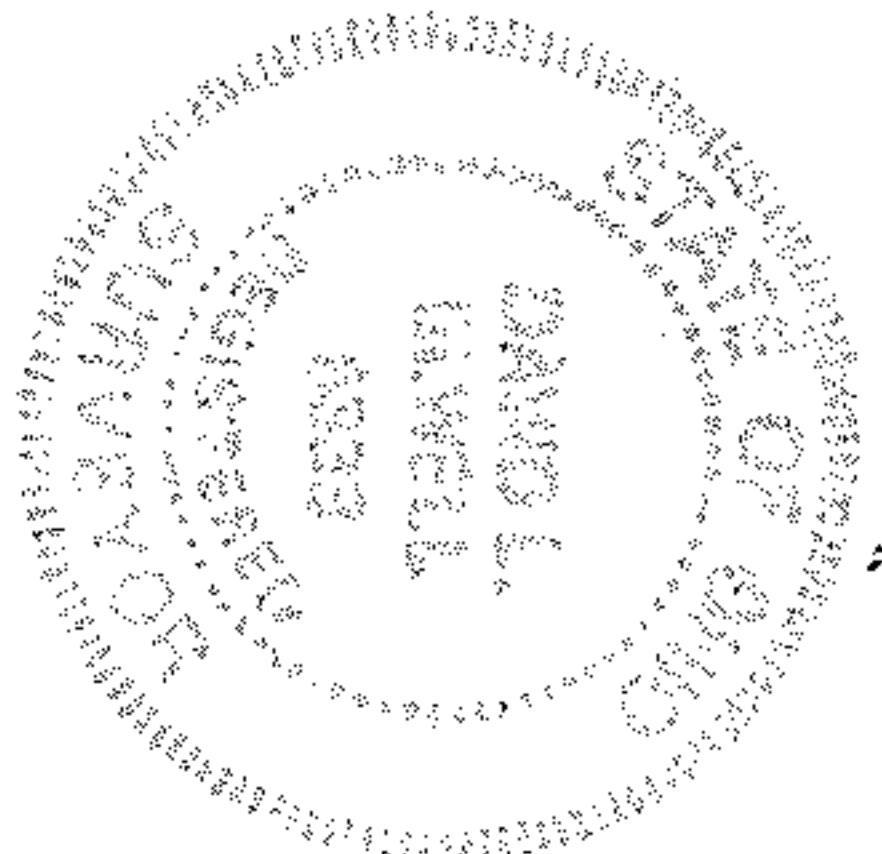


THOMAS D. & BEVERLY NIELSEN
D.V. 1254 P.60



RS
ENGINEERS/SURVEYORS
ASSOCIATES
INCORPORATED

CITY OF ELYRIA

COUNTY OF LORAIN

STATE OF OHIO

EAST OF BLACK RIVER — ORIG. LOT NO. 162

PART OF ELYRIA TOWNSHIP

SURVEY MAP

David L. Hawell
REG. SURV. NO. 6333

REV. 8-25-87

N-8°01'-E 5.06'
N-8°01'-E 5.06'
N-8°01'-E 5.06'
S.W. COR. SUBLOT - 13
N.W. COR. SUBLOT - 12

N-89°13'-E 10'
S-99°13'-W 10'
N-89°13'-E 12'

13
0.0405 Ac.
0.0405 Ac.
WALKWAY

354.27'
353.41'
352.56'

S.E. COR. SUBLOT - 13
N.E. COR. SUBLOT - 12
OVERBROOK ROAD

CURVE DATA
"A"
R = 790.95'
A = 5°20'
T = 2.65'
C = 5.20'
CB = N-16°56'54"-E
"B"
R = 790.95'
A = 5°20'
T = 2.65'
C = 5.20'
CB = N-17°38'35"-E

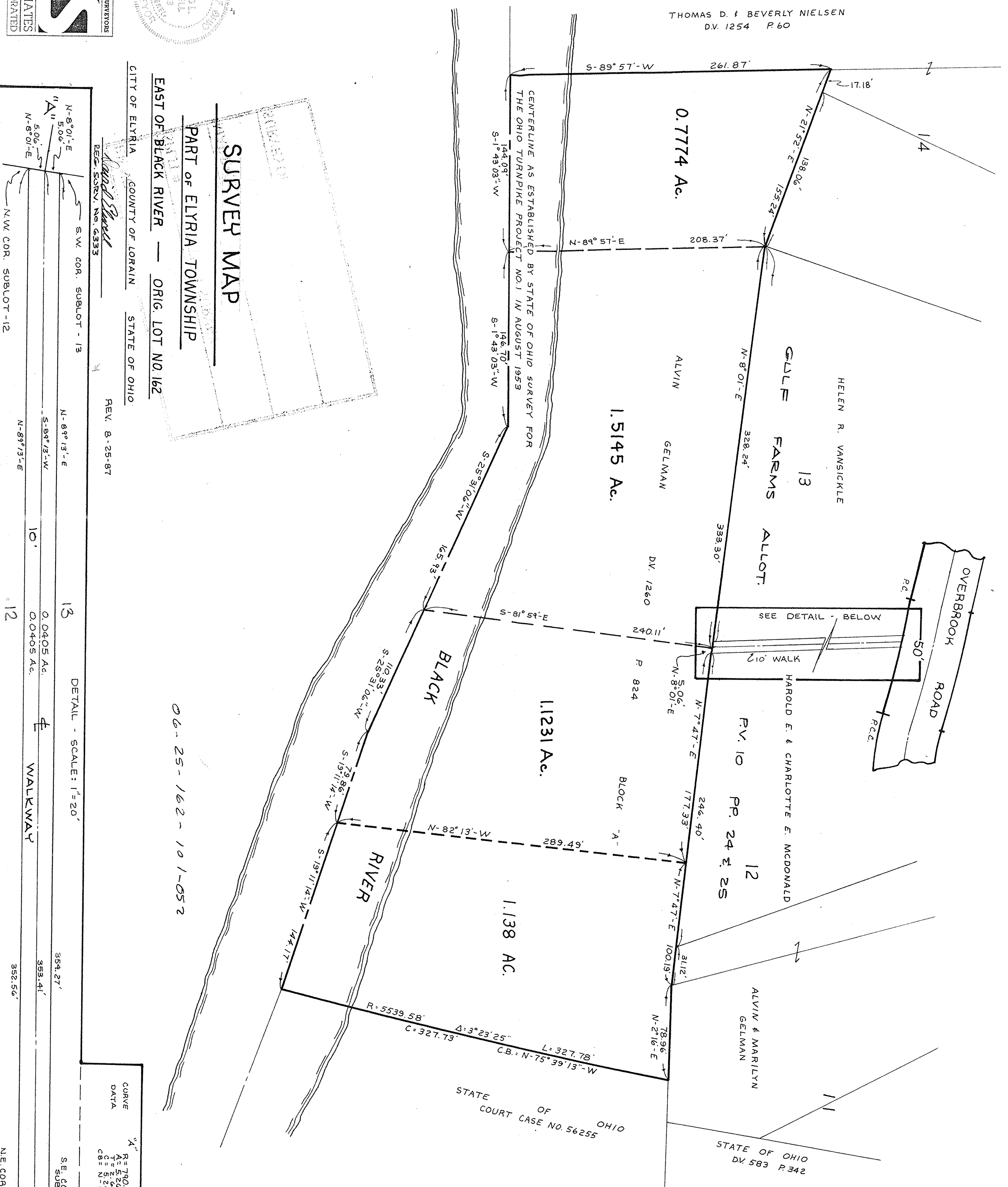
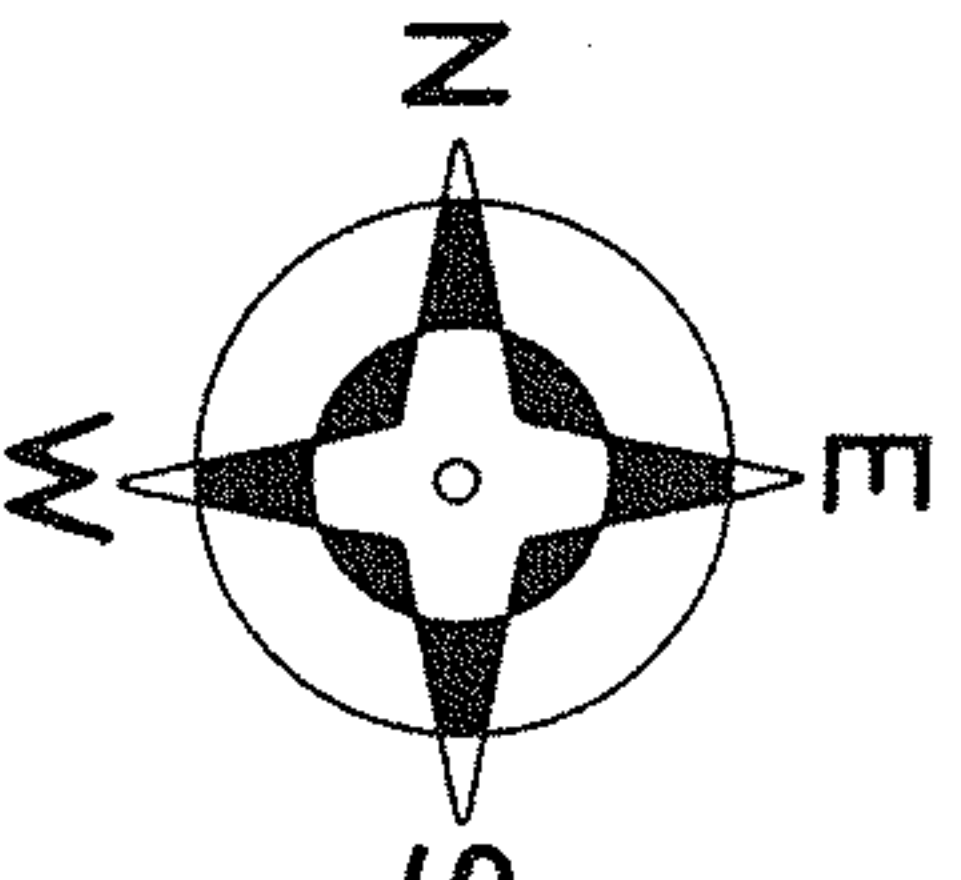
17634
APPROVED
LORAIN CO.
MAP DEPT.
DATE 9-3-87
PAGE 6-6-6
BY C. FEENEY
VOID AFTER 17634

06-25-162-101-052

STATE OF OHIO
COURT CASE NO. 56255

STATE OF OHIO
D.V. 583 P.342

SCALE: 1"=50'



CENTERLINE AS ESTABLISHED BY STATE OF OHIO SURVEY FOR THE OHIO TURNPIKE PROJECT NO. 1 IN AUGUST 1953

SEE DETAIL - BELOW
210' WALK

