



# KLEINOEDER · SCHMIDT

and ASSOCIATES

ENGINEERS — SURVEYORS — CONSULTANTS in LAND PLANNING

ELYRIA · NORWALK · MEDINA

OHIO

Sublot(s) PART OF NO. 1

Subd'n SUGARLANE INDUSTRIAL PARK

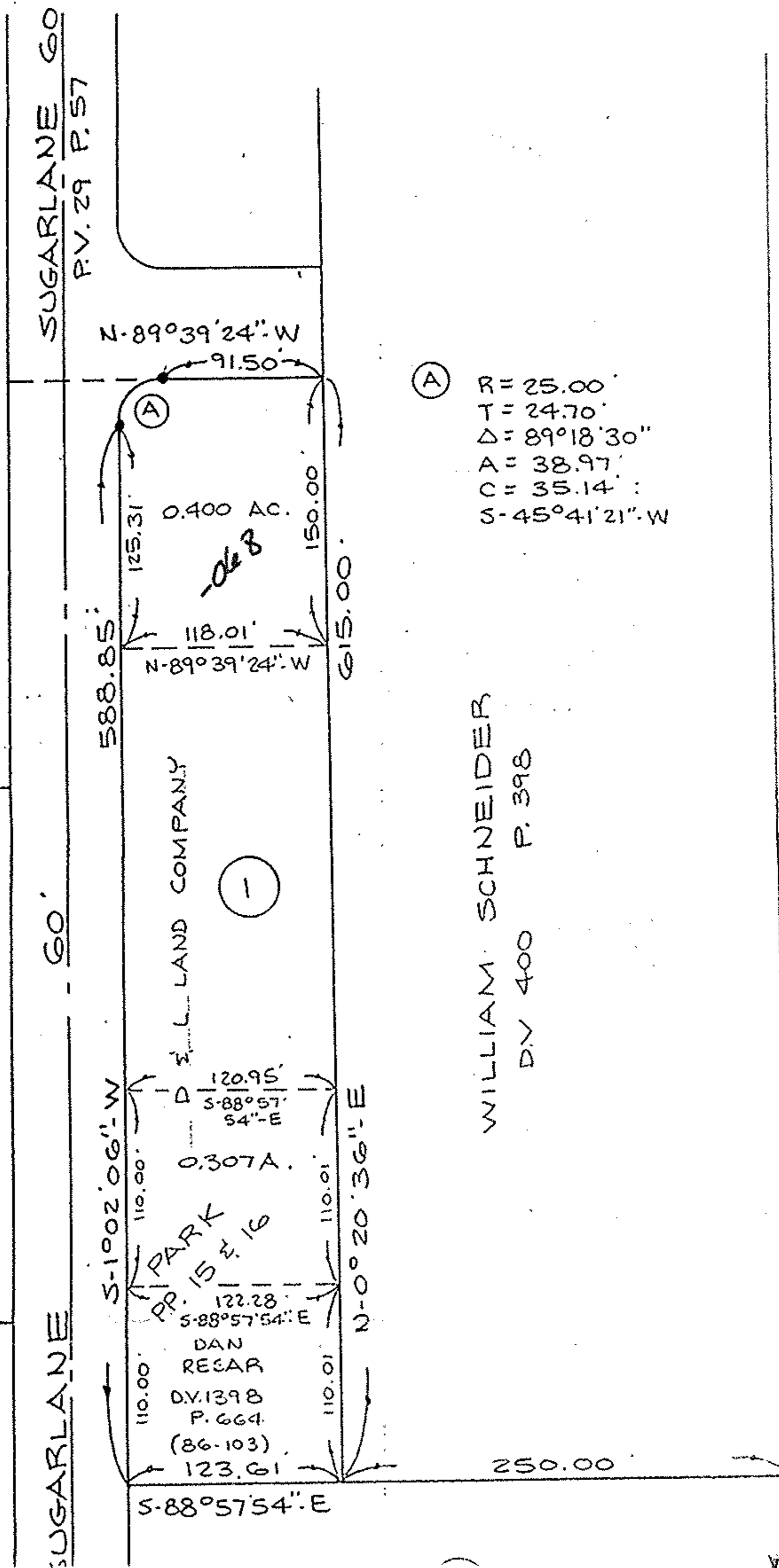
Township ELYRIA Tract E. OF BLACK RIVER

Orig. Lot(s) 1 Sec.           

County of LORAIN State of Ohio

Corporation CITY OF ELYRIA

NORTH



(A) R = 25.00'  
 T = 24.70'  
 $\Delta = 89^\circ 18' 30''$   
 A = 38.97'  
 C = 35.14'  
 S-45°41'21"-W

WILLIAM SCHNEIDER  
 D.V. 400 P. 398

(12)  
 INDUSTRIAL  
 16

No. 25-001-000-068

#17333  
 APPROVED  
 LORAIN CO.  
 MAP DEPT.  
 DATE 3-17-87  
 PAGE 6-144  
 BY T. McVain  
 VOID AFTER

6-144

#17333

06-25-001-000