

BOUNDARY SURVEY

PART OF ELYRIA TOWNSHIP ORIGINAL LOTS NOS 11, 95, & 96

WEST OF BLACK RIVER
CITY OF ELYRIA COUNTY OF LORAIN STATE OF OHIO

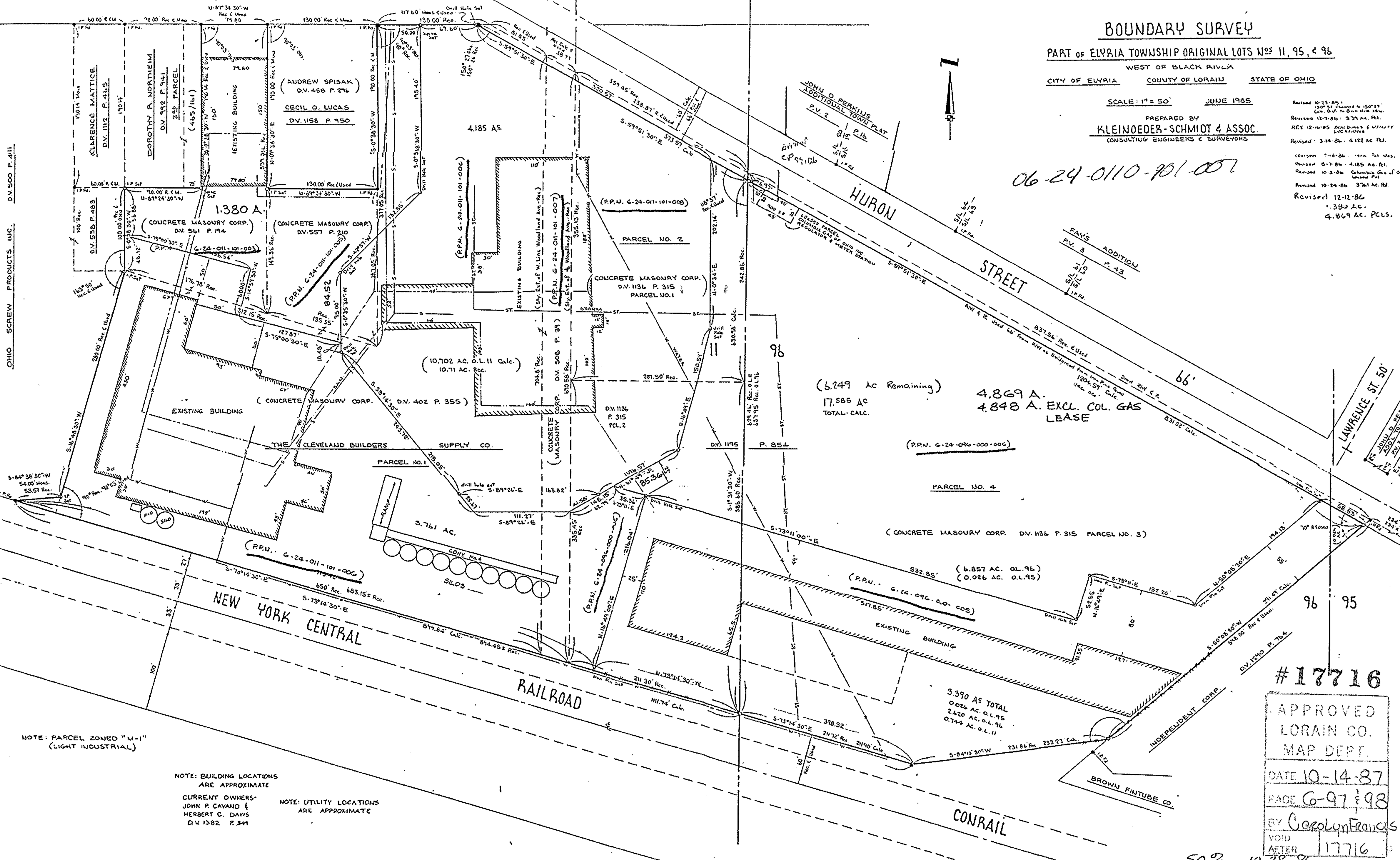
SCALE: 1" = 50' JUNE 1985

PREPARED BY
KLEINOEDER-SCHMIOT & ASSOC.
CONSULTING ENGINEERS & SURVEYORS

Revised 10-25-85
120' ST. changed to 150' ST.
Calc. Diff. To Own With 240'.
Revised 12-7-85: 377 AC. PCL.
KEY 12-14-85: 377 AC. PCL. & 117' ST. LOCATION
Revised: 3-14-86: 4122 AC. PCL.
Correction: 7-16-86: term 24' Mes.
Revised: 8-7-86: 4185 AC. PCL.
Revised: 10-3-86: Columbus Co. of Ohio General Plat
Revised: 10-24-86: 3761 AC. PCL.
Revised: 12-12-86
1.380 AC.
4.869 AC. PCLs.

06-24-0110-701-007

OHIO SCREW PRODUCTS, INC. D.V. 500 P. 411



(6,249 AC Remaining)
17,585 AC
TOTAL - CALC.

4,869 A.
4,848 A. EXCL. COL. GAS
LEASE

NOTE: PARCEL ZONED "M-1"
(LIGHT INDUSTRIAL)

NOTE: BUILDING LOCATIONS
ARE APPROXIMATE

CURRENT OWNERS:
JOHN P. CAVANO &
HERBERT C. DAVIS
D.V. 1382 P. 341

NOTE: UTILITY LOCATIONS
ARE APPROXIMATE

#17716

APPROVED
LORAIN CO.
MAP DEPT.

DATE 10-14-87

PAGE 6-97 of 98

BY Carolyn Francis

VOID
AFTER 17716

50% 10-28-96