

06-24-039-000

20286 C#

C-40

NOTE: THIS PREPARED FROM SURVEYS BY RAY E. HOLLIS (D.V. III P. 67) & J.R. FOOR & ASSOC. IN JULY 1974. NO PINS HAVE BEEN SET BY KS ASSOC. INC.

06-24-039-000-016, 017-018, 0165

GRISWOLD ROAD 60'

BRACE TR. TR. W. OF RIVER

20286

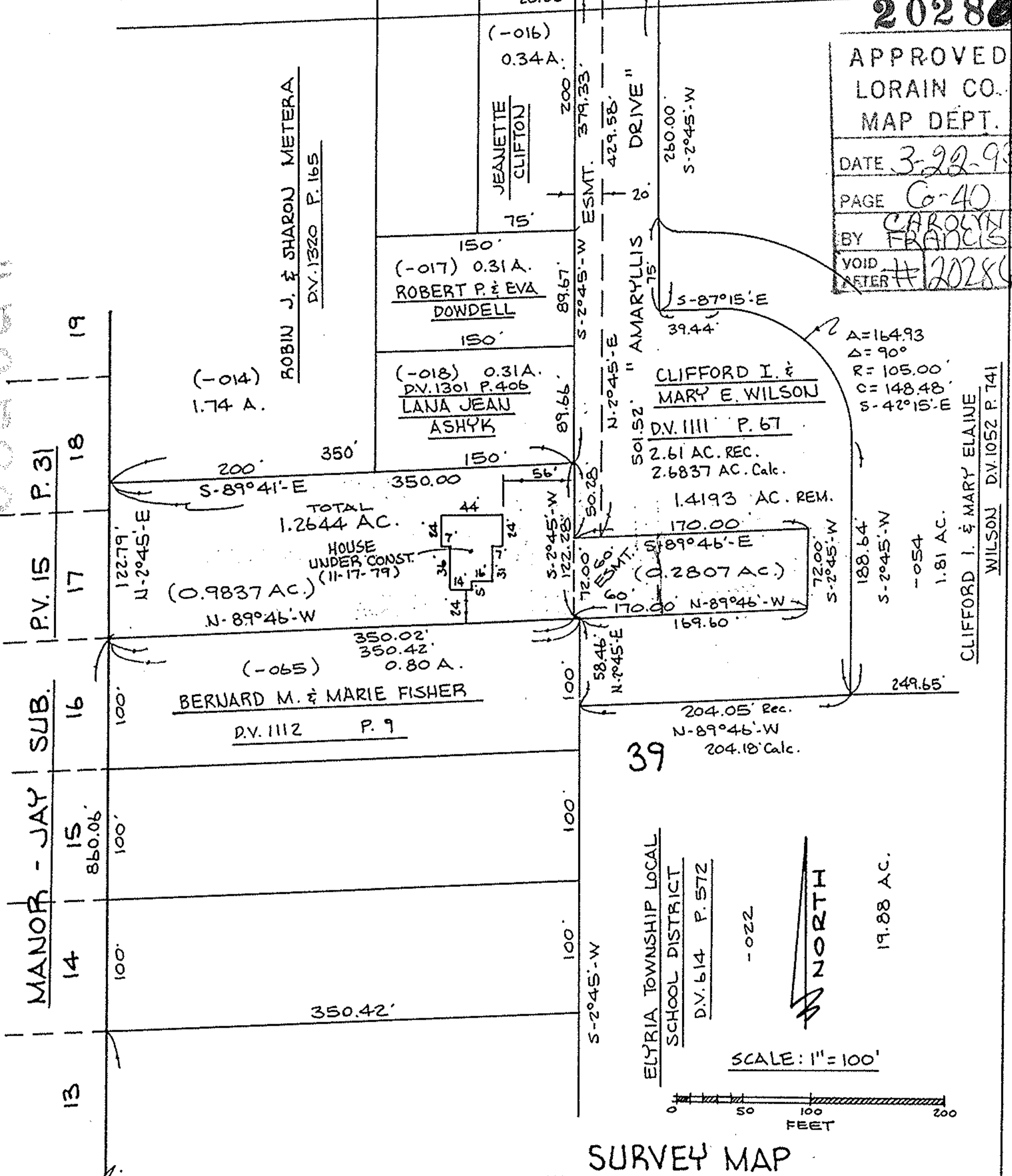
APPROVED  
LORAIN CO.  
MAP DEPT.

DATE 3-22-93

PAGE C-40

BY CAROLYN FRANCIS

VOID # 20286



PART OF ELYRIA TOWNSHIP ORIGINAL  
LOT NO. 39 - TRACT W. OF RIVER  
TOWNSHIP OF ELYRIA COUNTY OF LORAIN

STATE OF OHIO

PREPARED BY

KS ASSOCIATES INC.

ENGINEERS SURVEYORS

REV. 1-04-93 REV. 1-14-93

REV. 1-08-93

92-496A

S. LINE O.L. 39

David L. Elwell  
REG. SURV. NO. 6333  
11-19-92 REV. 12-16-92