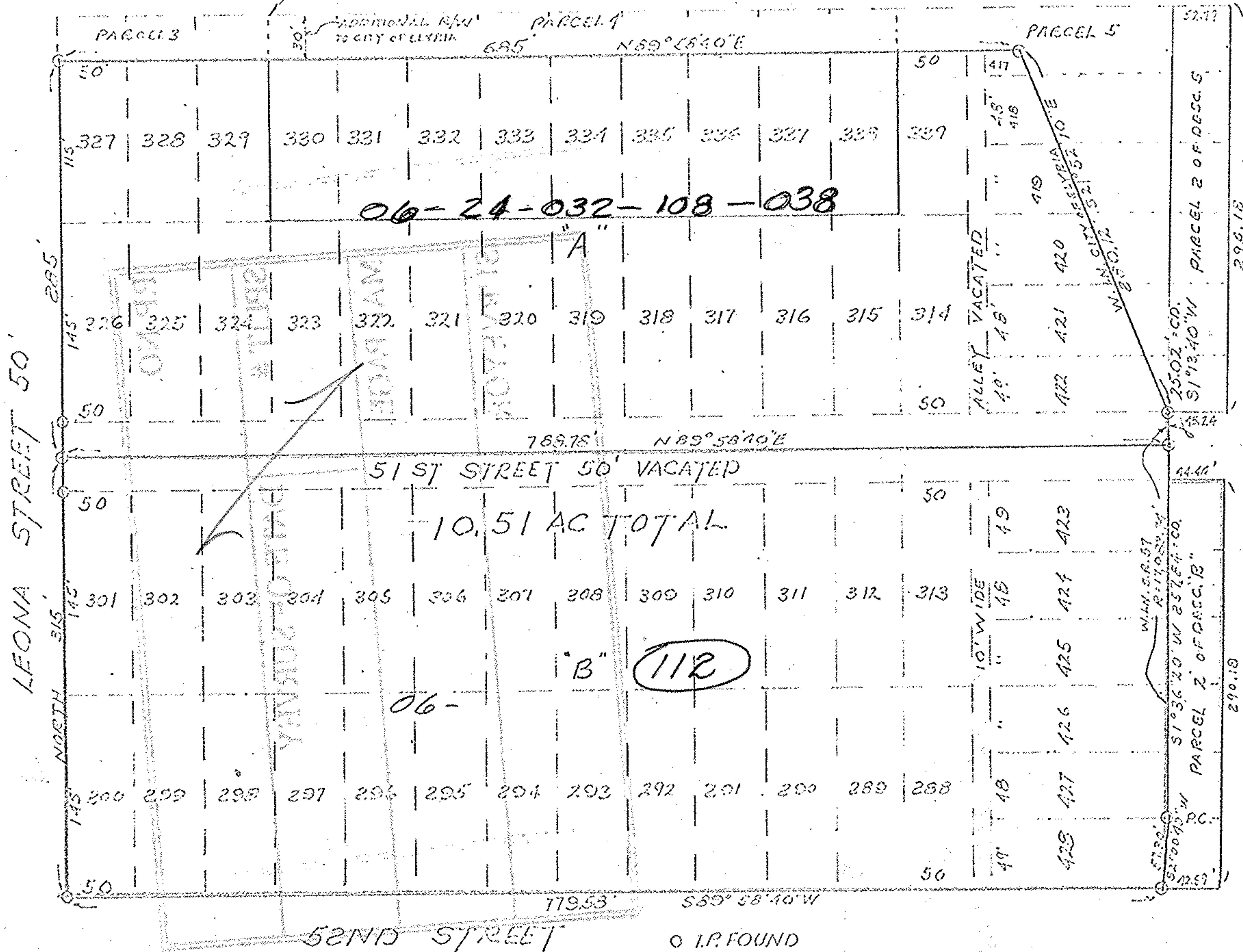


6-45

SOUTH LINE 50th STREET



LEONA STREET 50'

06-24-032-108-038

10.51 AC TOTAL

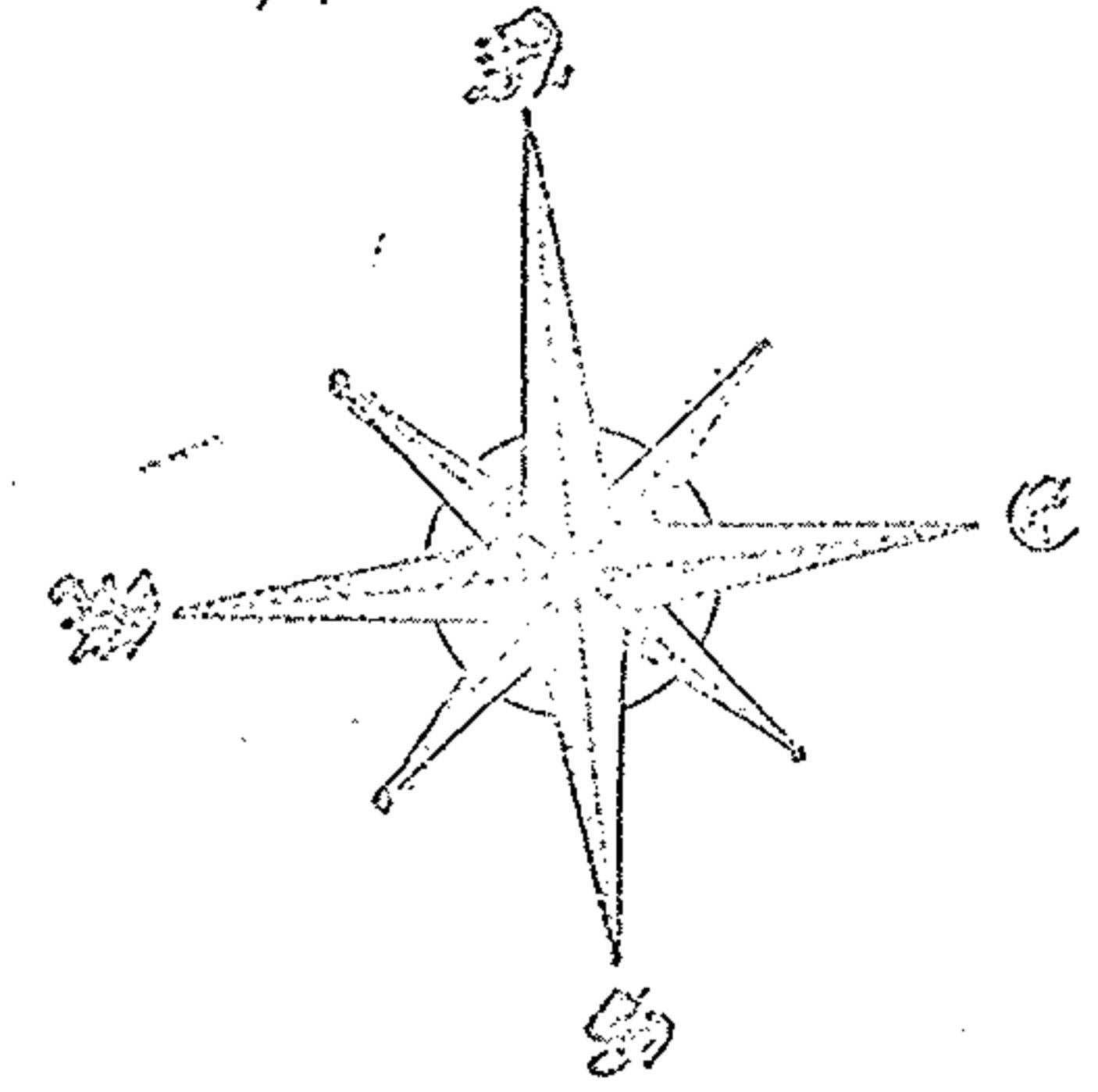
112

51 ST STREET 50' VACATED

52ND STREET

0 I.P. FOUND  
0 J.P. SET

PARCELS A & B  
SURVEY OF PART OF  
LEONA HEIGHTS ALLOT  
O.L. 32 EAST OF BLACK RIVER  
ELYRIA TOWNSHIP NOW IN  
CITY OF ELYRIA, OHIO



S.R. 57

Prepared by  
JAMES H. SCHMIDT  
Registered Surveyor  
307 Robinson Bldg., Elyria, O.  
2/21/67 #6202