

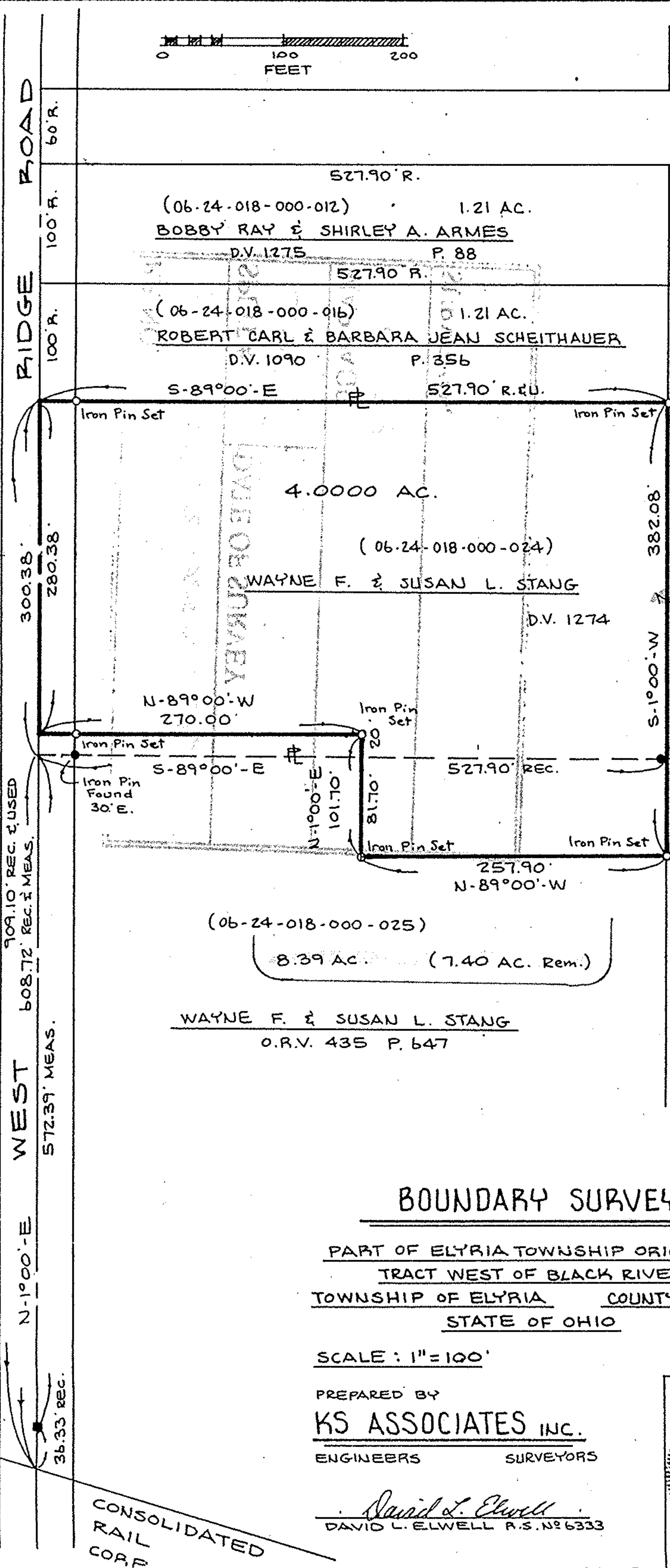
06-24-018-000-012-013-000-

06-24-018-000-012-013-000-

4800 S#

20084

6-73



(06-24-018-000-012) 1.21 AC.
BOBBY RAY & SHIRLEY A. ARMES
D.V. 1275 P. 88

(06-24-018-000-016) 1.21 AC.
ROBERT CARL & BARBARA JEAN SCHEITHAUER
D.V. 1090 P. 356

(06-24-018-000-024) 27.63 AC.
WAYNE F. & SUSAN L. STANG
D.V. 1274 P. 798
(24.62 AC. Rem.)

(06-24-018-000-025) 8.39 AC. (7.40 AC. Rem.)
WAYNE F. & SUSAN L. STANG
O.R.V. 435 P. 647

WEST 572.39' MEAS.
909.10' REC. & USED
608.72' REC. & MEAS.

N-1°00'-E

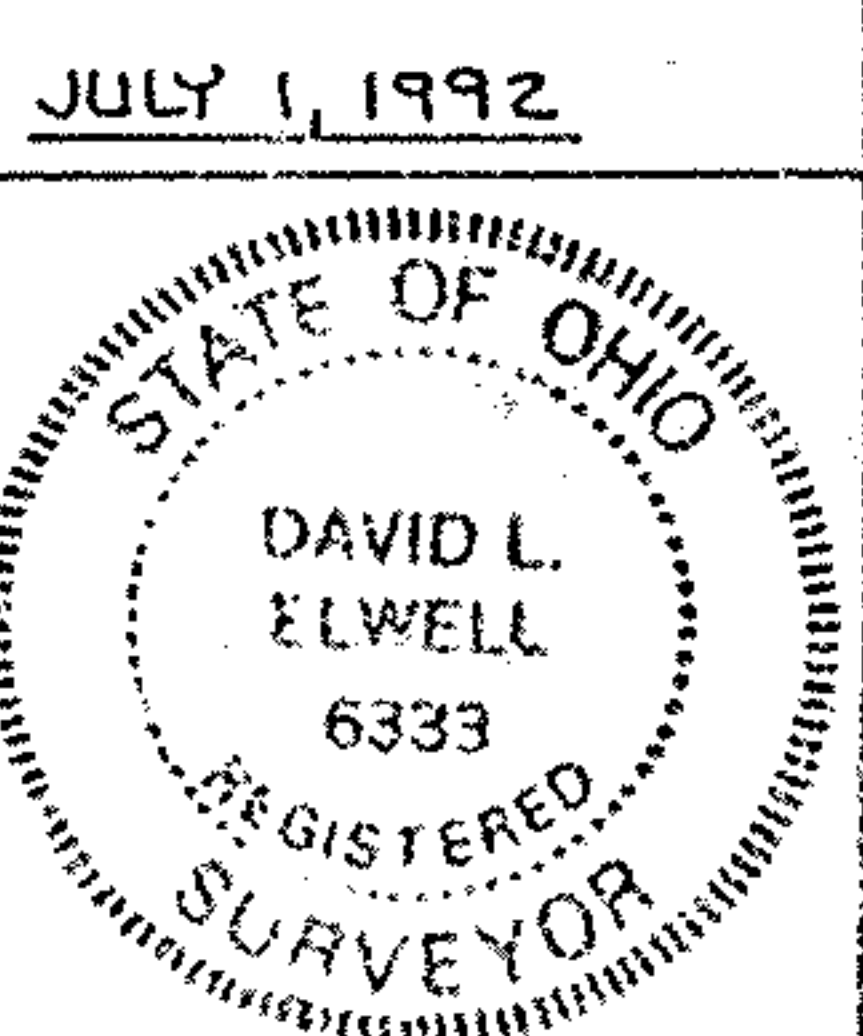
36.33' REC.

20084
APPROVED
LORAIN CO.
MAP DEPT.
DATE 9-15-92

BOUNDARY SURVEY

PART OF ELYRIA TOWNSHIP ORIGINAL
TRACT WEST OF BLACK RIVER
TOWNSHIP OF ELYRIA COUNTY OF LORAIN
STATE OF OHIO

SCALE: 1" = 100'
PREPARED BY
KS ASSOCIATES INC.
ENGINEERS SURVEYORS



David L. Elwell
DAVID L. ELWELL R.S. NO. 6333

CONSOLIDATED
RAIL
CORP.