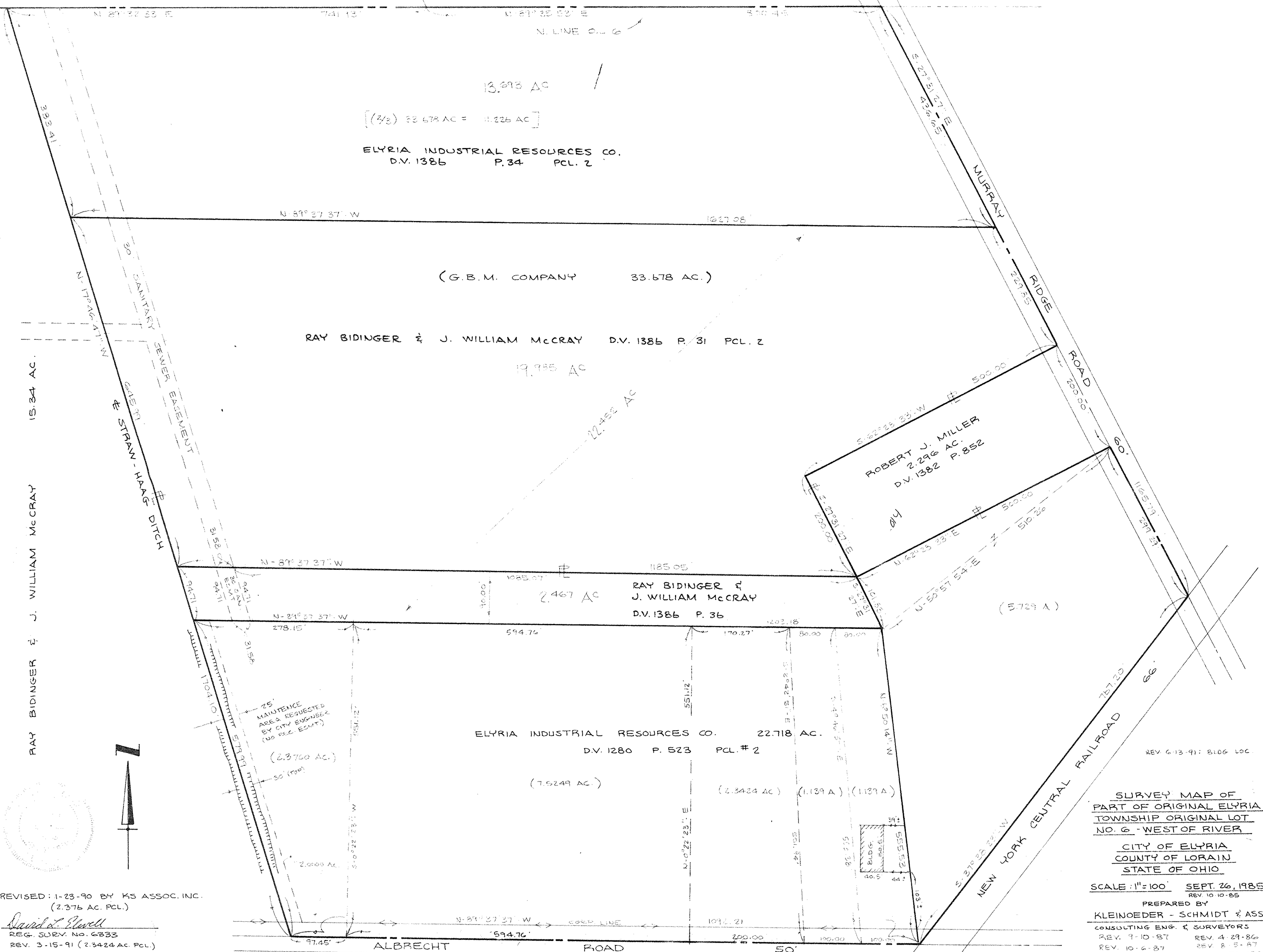


06-24-006-000-014



13.693 AC

$(\frac{2}{3}) 20.678 AC = 13.785 AC$

ELYRIA INDUSTRIAL RESOURCES CO.
D.V. 1386 P. 34 PCL. 2

(G.B.M. COMPANY 33.678 AC.)

RAY BIDINGER & J. WILLIAM McCRAY D.V. 1386 P. 31 PCL. 2

19.985 AC

12.453 AC

ROBERT J. MILLER
2.296 AC.
D.V. 1382 P. 852

RAY BIDINGER & J. WILLIAM McCRAY
D.V. 1386 P. 36

2.467 AC

ELYRIA INDUSTRIAL RESOURCES CO. 22.718 AC.
D.V. 1280 P. 523 PCL. # 2

(7.9249 AC.)

(2.3424 AC)

(1.139 A)

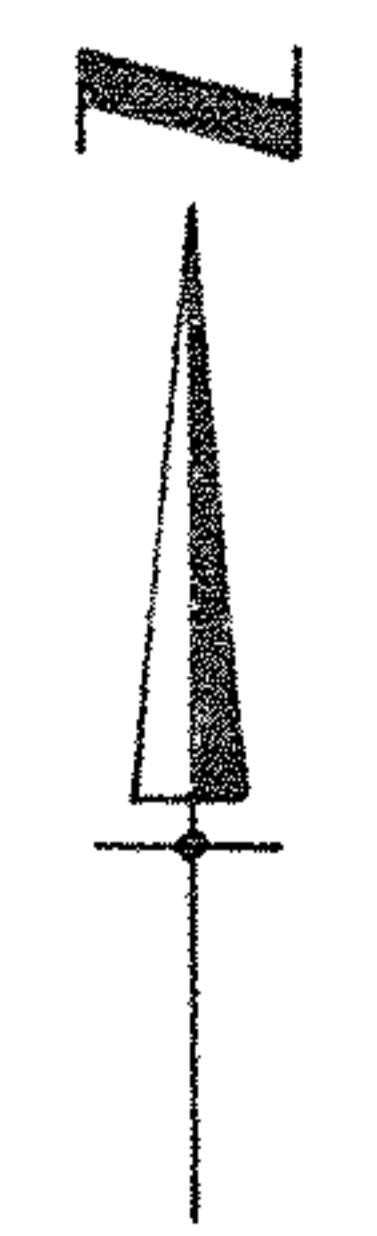
(1.139 A)

(2.3760 AC.)

2.6000 AC.

REVISED: 1-23-90 BY KS ASSOC. INC.
(2.376 AC. PCL.)

David L. Howell
REG. SURV. NO. 6833
REV. 3-15-91 (2.3424 AC. PCL.)



SURVEY MAP OF
PART OF ORIGINAL ELYRIA
TOWNSHIP ORIGINAL LOT
NO. 6 - WEST OF RIVER

CITY OF ELYRIA
COUNTY OF LORAIN
STATE OF OHIO

SCALE: 1"=100' SEPT. 26, 1985
REV. 10-10-85

PREPARED BY
KLEINOEDER - SCHMIDT & ASSOC.
CONSULTING ENG. & SURVEYORS
REV. 9-10-87 REV. 4-29-86
REV. 10-6-87 REV. 2-5-87
70-136