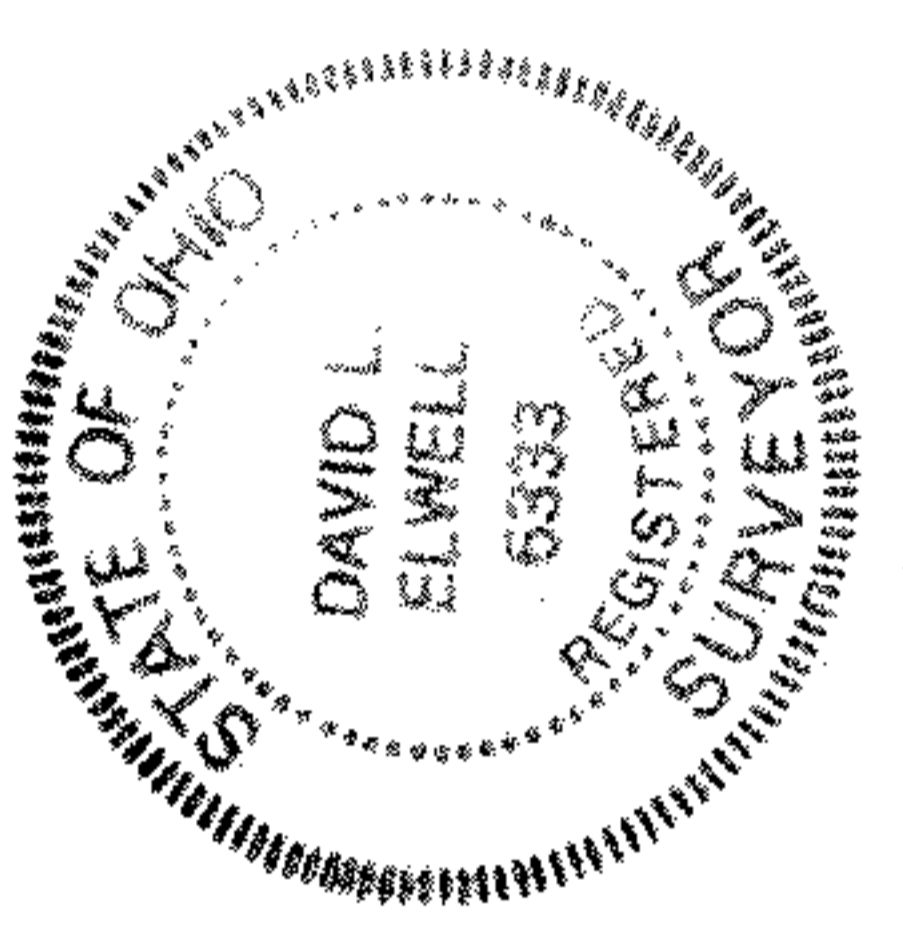
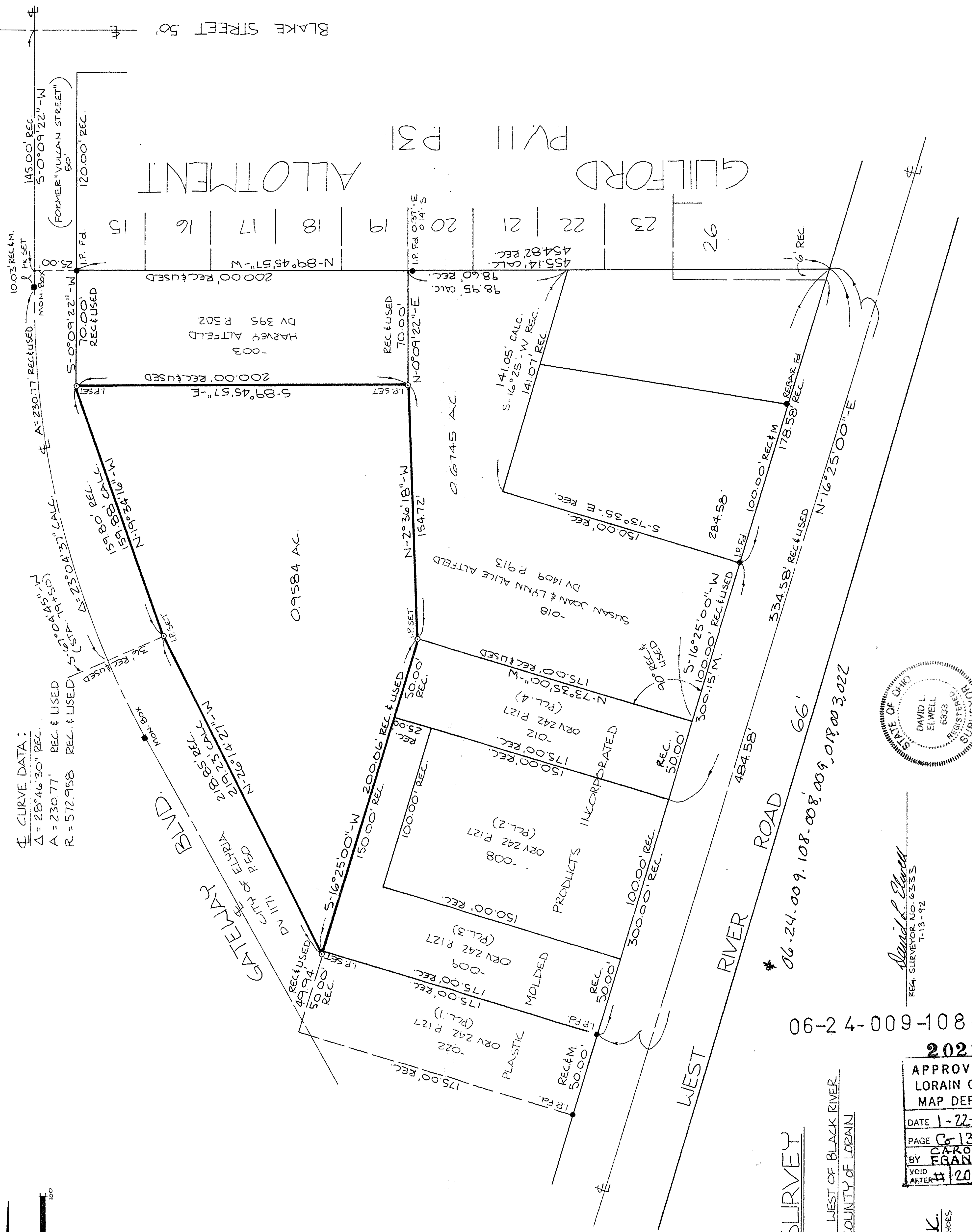


CURVE DATA:  
Δ = 28°46'30" REC.  
A = 230.77' REC. & USED  
R = 572.958 REC. & USED



David L. Elwell  
REG. SURVEYOR, NO. 6333  
7-13-92

06-24-00 9.108.008.009, 018.003.022

20229

APPROVED
LORAIN CO.
MAP DEPT.
DATE 1-22-93
PAGE 6-135
BY FRANKLYN FRANCIS
VOID AFTER # 20229

# BOUNDARY SURVEY

OF PART OF  
ELYRIA TOWNSHIP ORIGINAL LOT 9 WEST OF BLACK RIVER  
CITY OF ELYRIA COUNTY OF LORAIN  
STATE OF OHIO

PREPARED BY:  
**KS ASSOCIATES INC.**  
ENGINEERS SURVEYORS

WEST RIVER ROAD 66'  
\* 06-24-00 9.108.008.009, 018.003.022

GUILFORD P.V. III ALLOTMENT

26 23 22 21 20 19 18 17 16 15

HARVEY ALTFELD  
DV 395 P 502

SUSAN JOAN & LYNN ALICE ALTFELD  
DV 1409 P 913

PRODUCTS INCORPORATED

MOLDED

PLASTIC

0.9584 AC.

0.6745 AC.

GATEWAY BLVD.  
CITY OF ELYRIA  
DV 1111 P 60

BLAKE STREET 50'