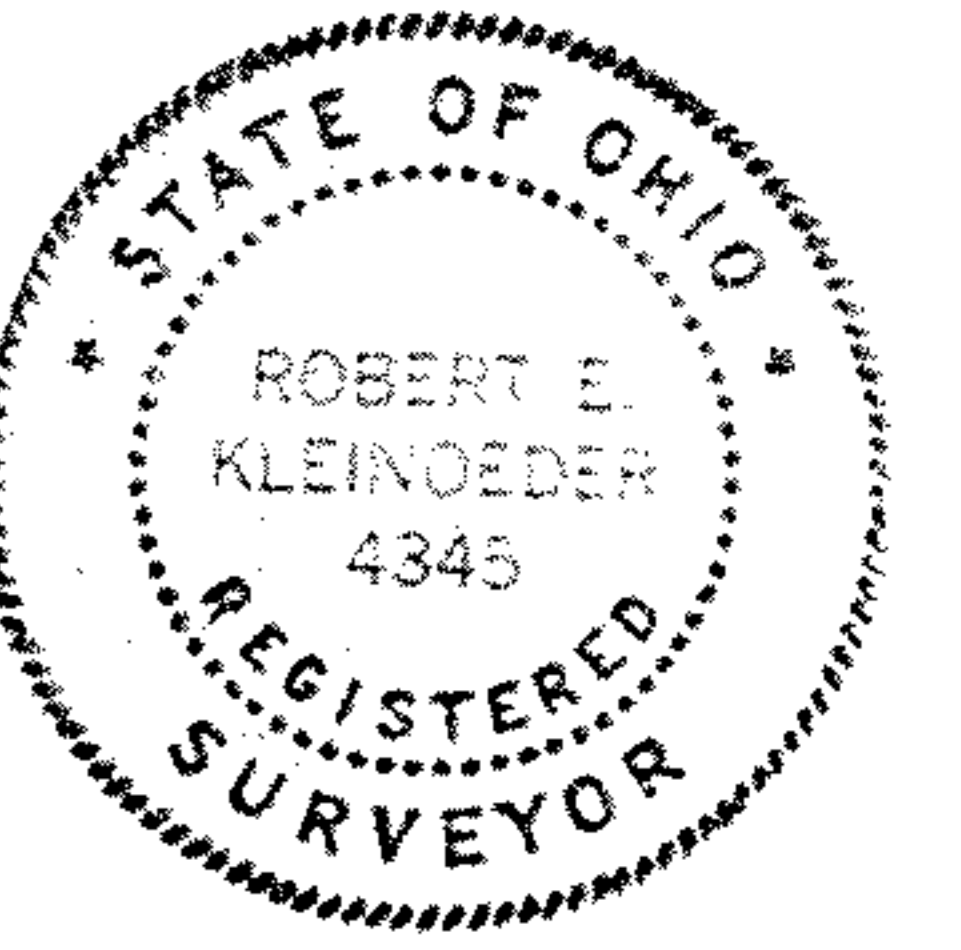


**SURVEY MAP**  
**PART OF ELYRIA TOWNSHIP ORIG. LOT 1-W. OF RIVER**  
 CITY OF ELYRIA      COUNTY OF LORAIN      STATE OF OHIO

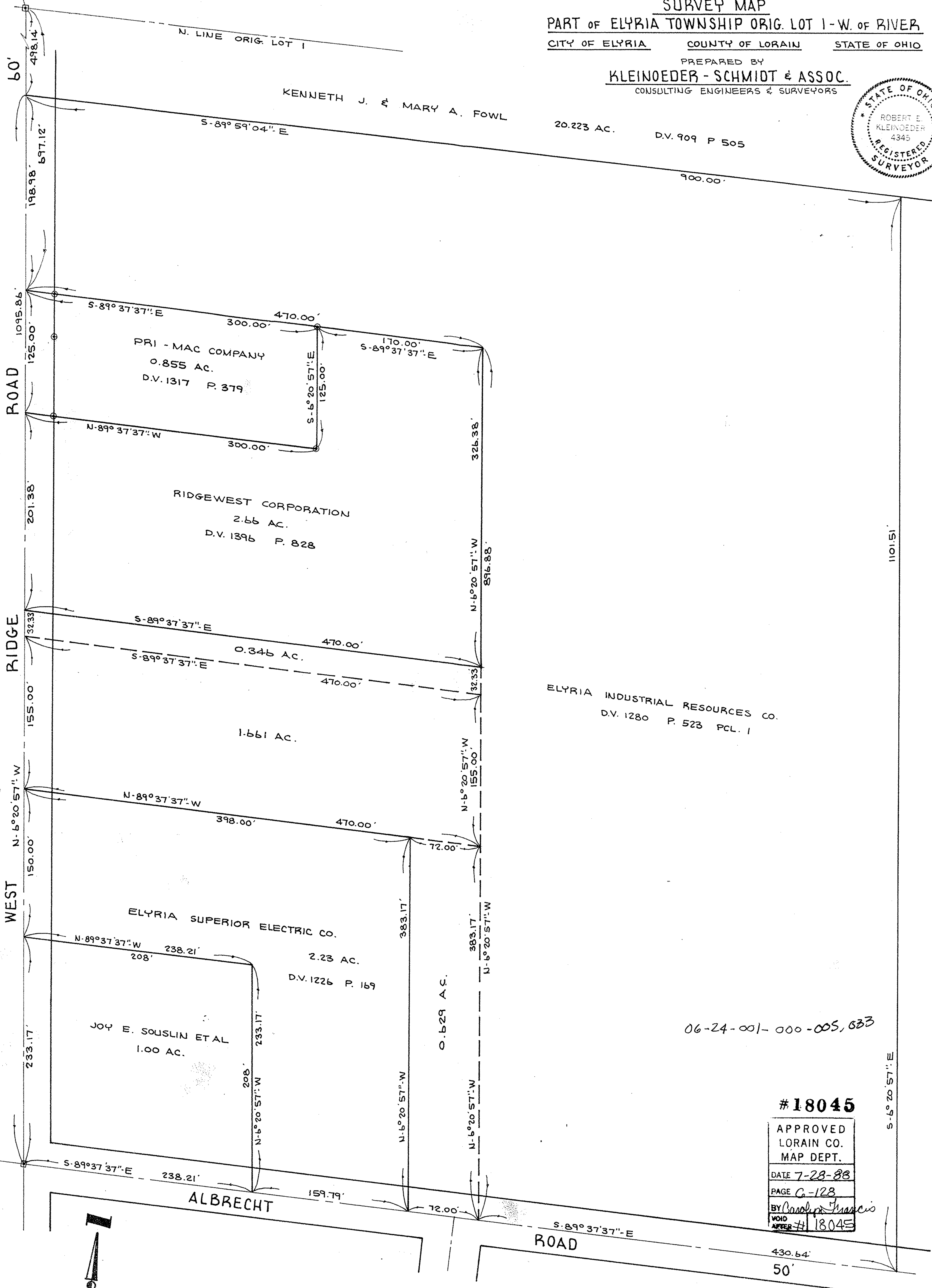
PREPARED BY  
**KLEINOEDER - SCHMIDT & ASSOC.**  
 CONSULTING ENGINEERS & SURVEYORS



KENNETH J. & MARY A. FOWL

20.223 AC.      D.V. 909 P 505

900.00'

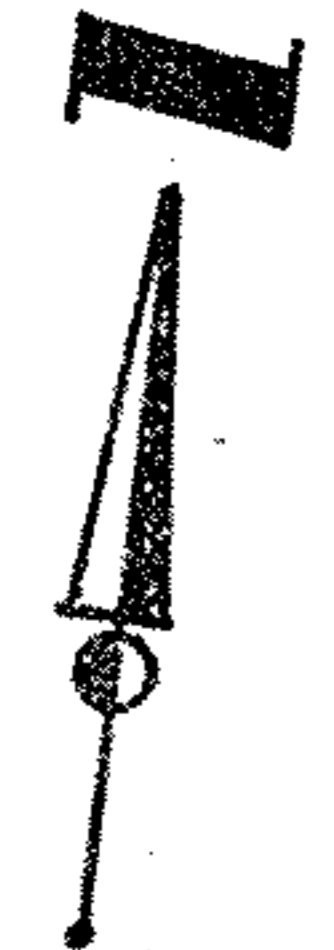


ELYRIA INDUSTRIAL RESOURCES CO.  
 D.V. 1280 P. 523 PCL. 1

06-24-001-000-005, 633

**#18045**

APPROVED
LORAIN CO.
MAP DEPT.
DATE 7-28-88
PAGE C-128
BY <i>Charles Francis</i>
VOID AFTER #18045



SCALE: 1" = 60'