

SURVEY MAP

PART OF ELYRIA TOWNSHIP ORIG. LOT 1-W. OF RIVER

CITY OF ELYRIA COUNTY OF LORAIN STATE OF OHIO

PREPARED BY

KLEINOEDER - SCHMIDT & ASSOC.

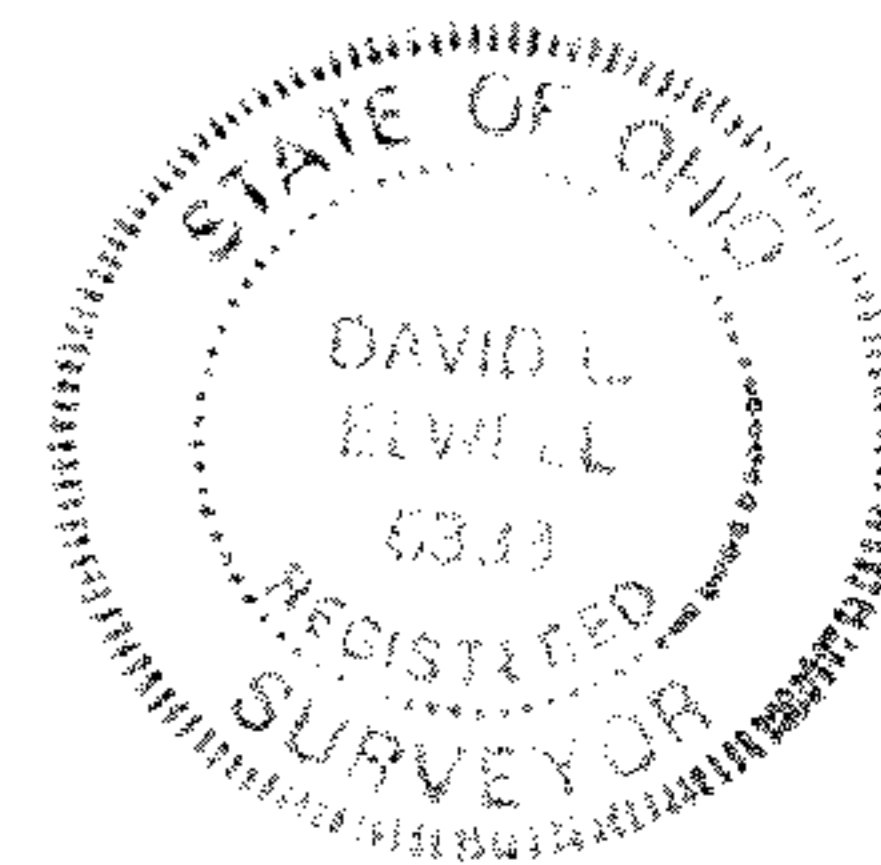
CONSULTING ENGINEERS & SURVEYORS

REVISED: 6-9-89 KS ASSOCIATES INC.
(0.4845 AC.) ENGINEERS SURVEYORS

David L. Elliott

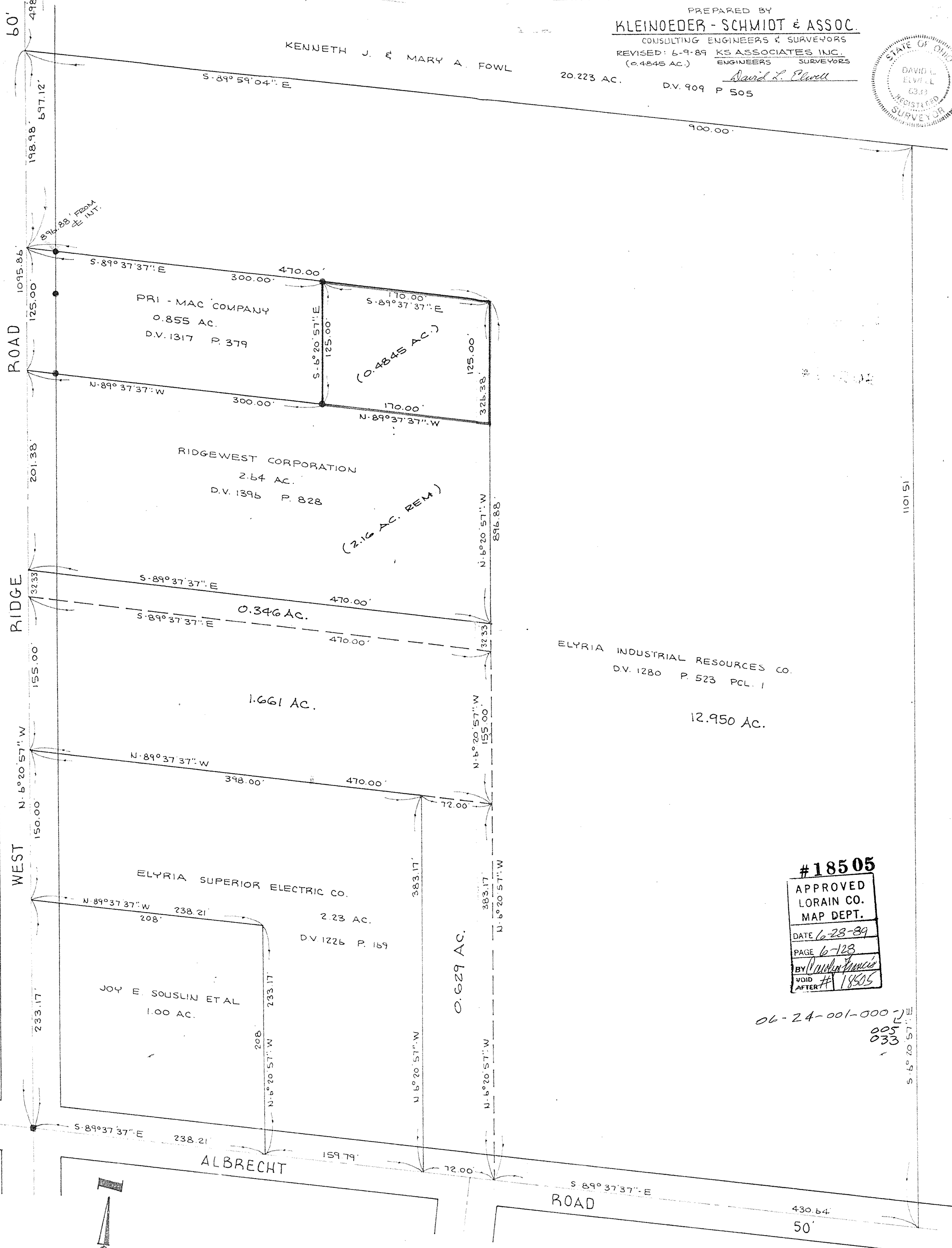
20.223 AC.

D.V. 909 P 505



KENNETH J. & MARY A. FOWL

N. LINE ORIG. LOT 1

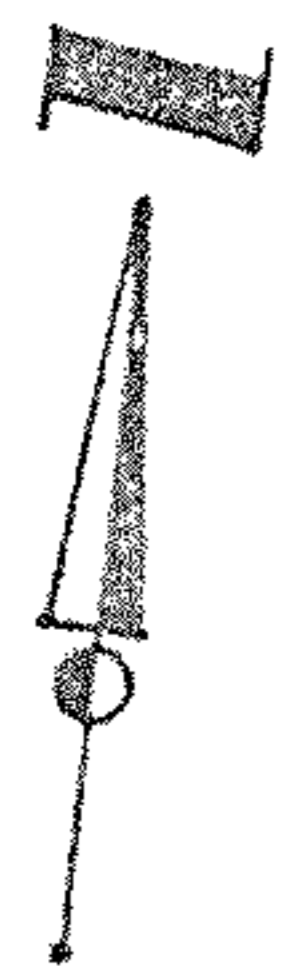


ELYRIA INDUSTRIAL RESOURCES CO.
D.V. 1280 P. 523 PCL. 1

12.950 AC.

#18505
APPROVED
LORAIN CO.
MAP DEPT.
DATE 6-23-89
PAGE 6-123
BY [Signature]
VOID AFTER #18505

06-24-001-000
005
033



SCALE: 1" = 60'