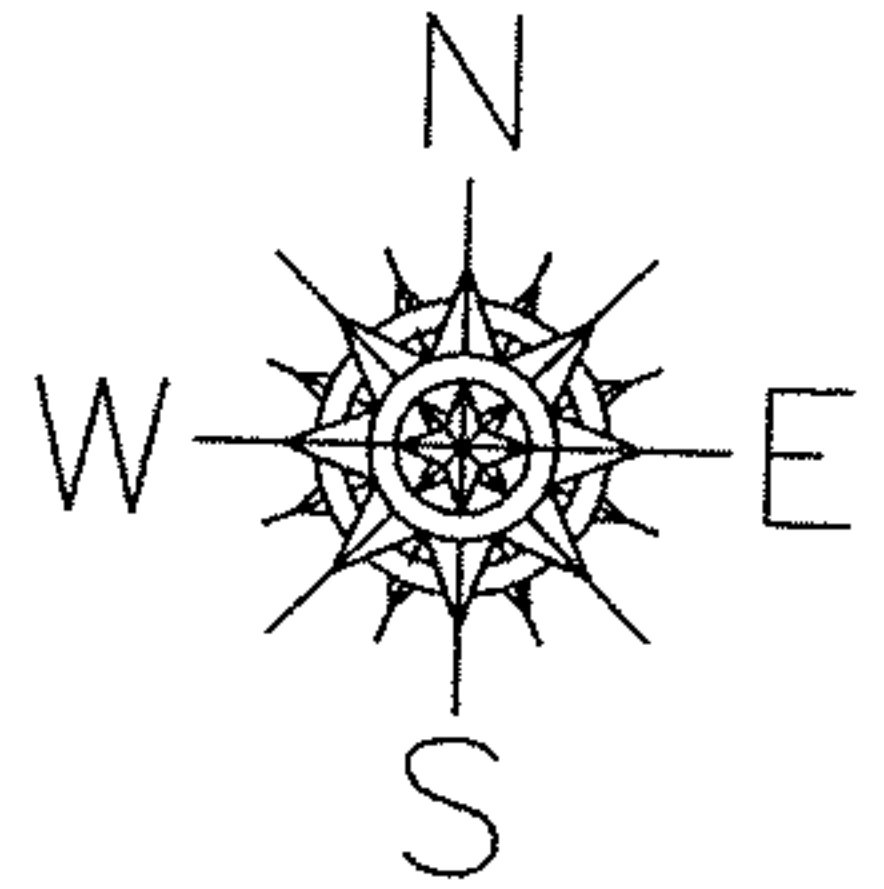


PARENT PARCEL: 04-00-013-000-449, -450, -452, -454

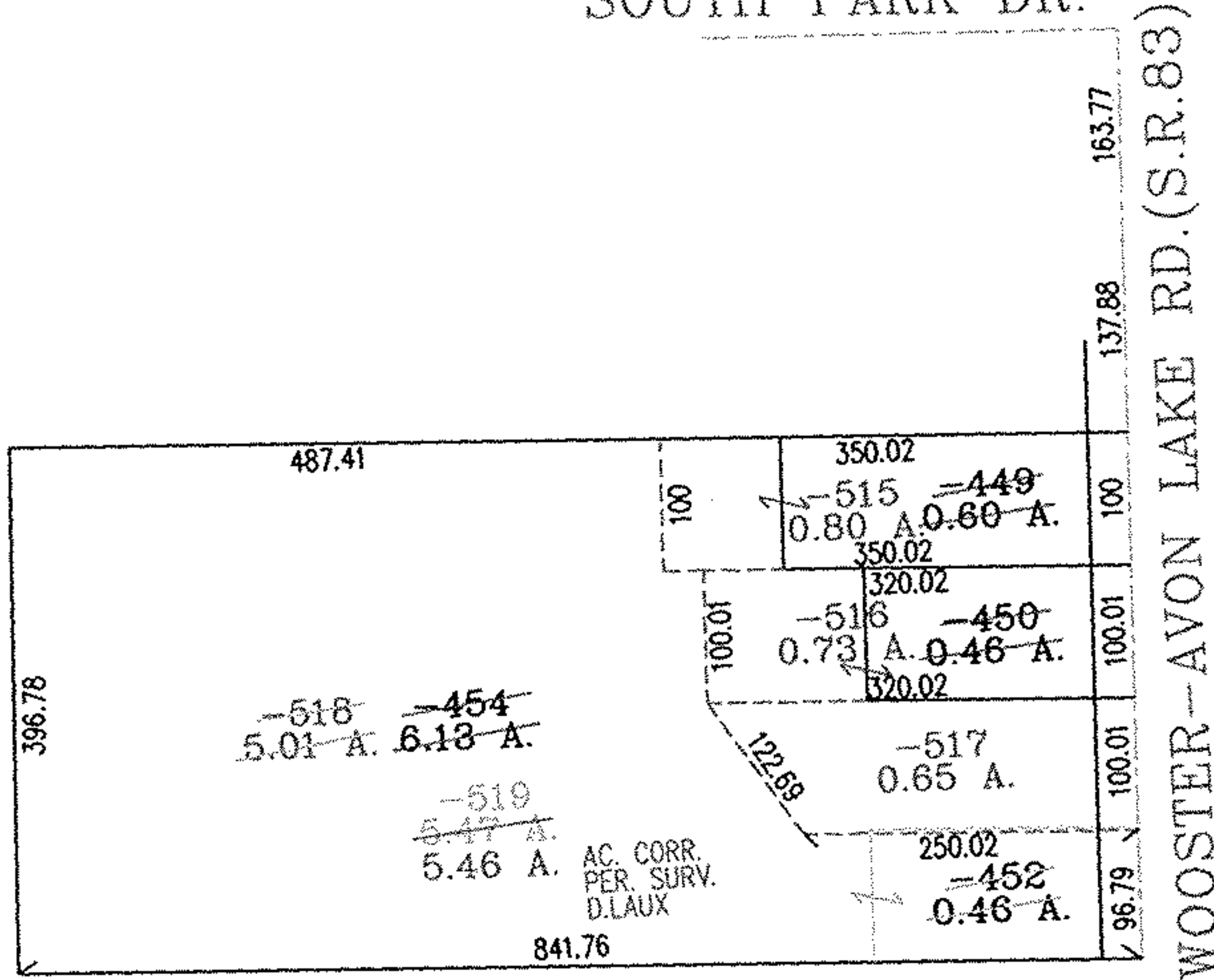
CHILD PARCEL: 04-00-013-000-515 THRU -519

STARTING POINT: INTERSECTION OF C/L OF S.R.83 AND C/L OF SOUTH PARK DR.

NO. 01768

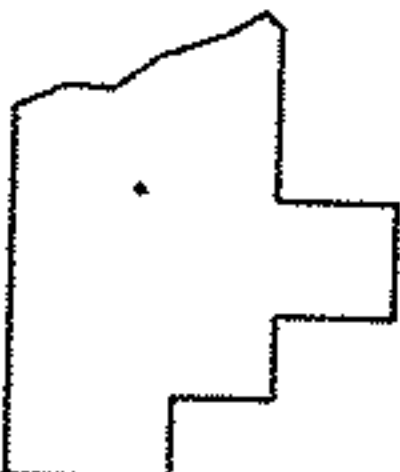


SOUTH PARK DR.



20020814581

PRIOR INSTRUMENT: 20020814583



**SPLITS/DEEDS PROCESSED**

LORAIN COUNTY TAX MAP DEPARTMENT  
226 MIDDLE AVE. ELYRIA, OHIO

SURVEYED BY: DANIEL LAUX

CLOSURE: .01:10.000

MAP PAGE(S): 4-00-013-B

APPROVED BY: RRM DATE: 10-12-04

SCALE: 1" = 200' PRIOR INSTRUMENT: SEE ABOVE