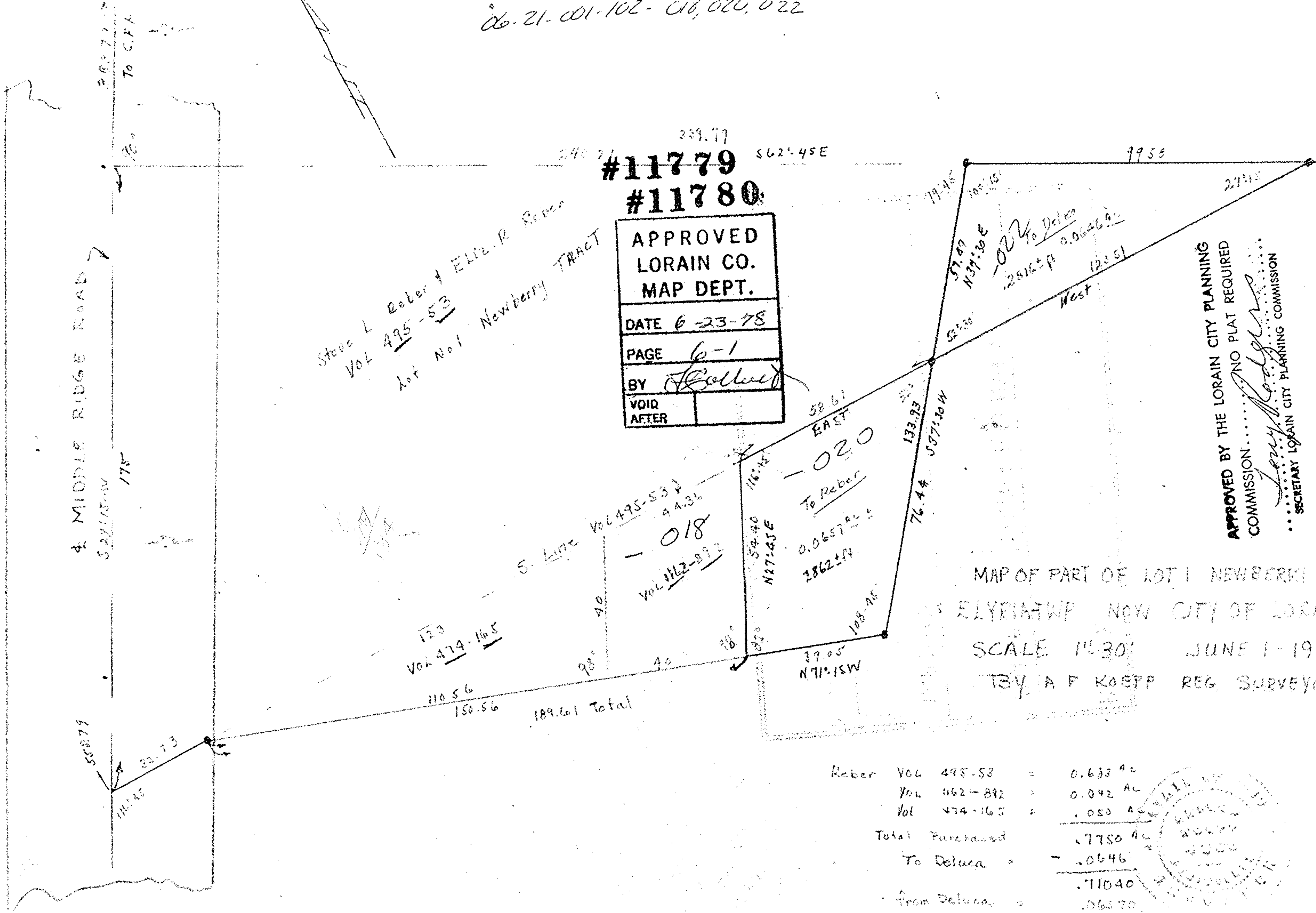


06-21-001-102-018,020,022



#11779
#11780

APPROVED
LORAIN CO.
MAP DEPT.

DATE 6-23-78

PAGE 6-1

BY *[Signature]*

VOID AFTER

APPROVED BY THE LORAIN CITY PLANNING COMMISSION... NO PLAT REQUIRED

[Signature]
SECRETARY LORAIN CITY PLANNING COMMISSION

APPROVED
[Signature]
Lorain Co. General Eng. Dept.

MAP OF PART OF LOT 1 NEWBERRY TRACT
ELYRIA TWP. NOW CITY OF LORAIN
SCALE 1"=30' JUNE 1-1978
BY A. F. KOEPP REG. SURVEYOR

Reber Vol 495-53	=	0.633 AC
Vol 462-892	=	0.042 AC
Vol 474-165	=	0.050 AC
Total Purchased	=	0.7750 AC
To Deluca	=	0.0646
	=	0.71040
from Deluca	=	0.06370
New own	=	0.7741 AC

