



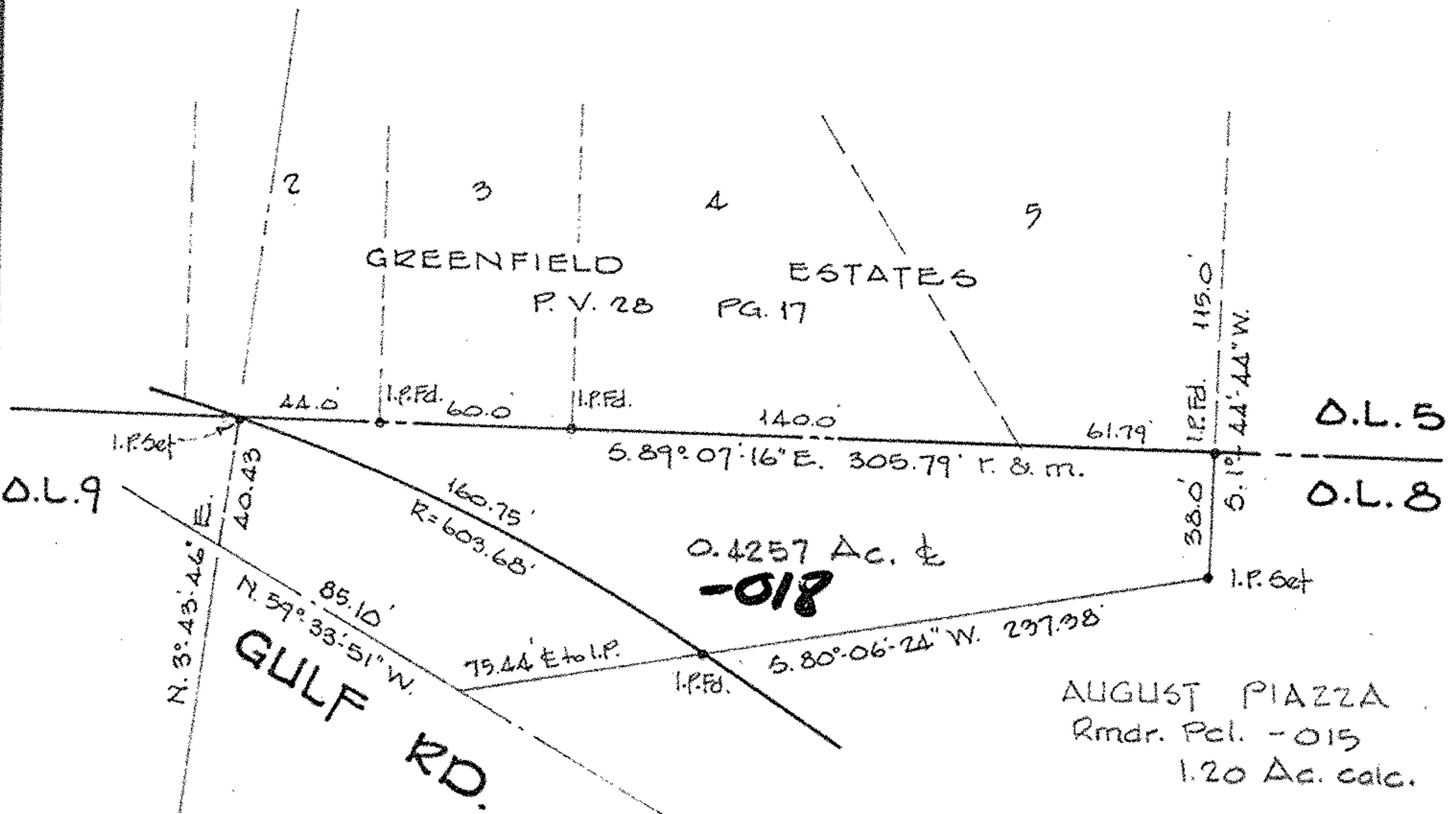
LAUNDON . SIMON . CAHL & ASSOC. INC.
 CONSULTING ENGINEERS & SURVEYORS
 219 COURT ST. ELYRIA, OHIO 44035

SURVEY FOR:

AUGUST PIAZZA

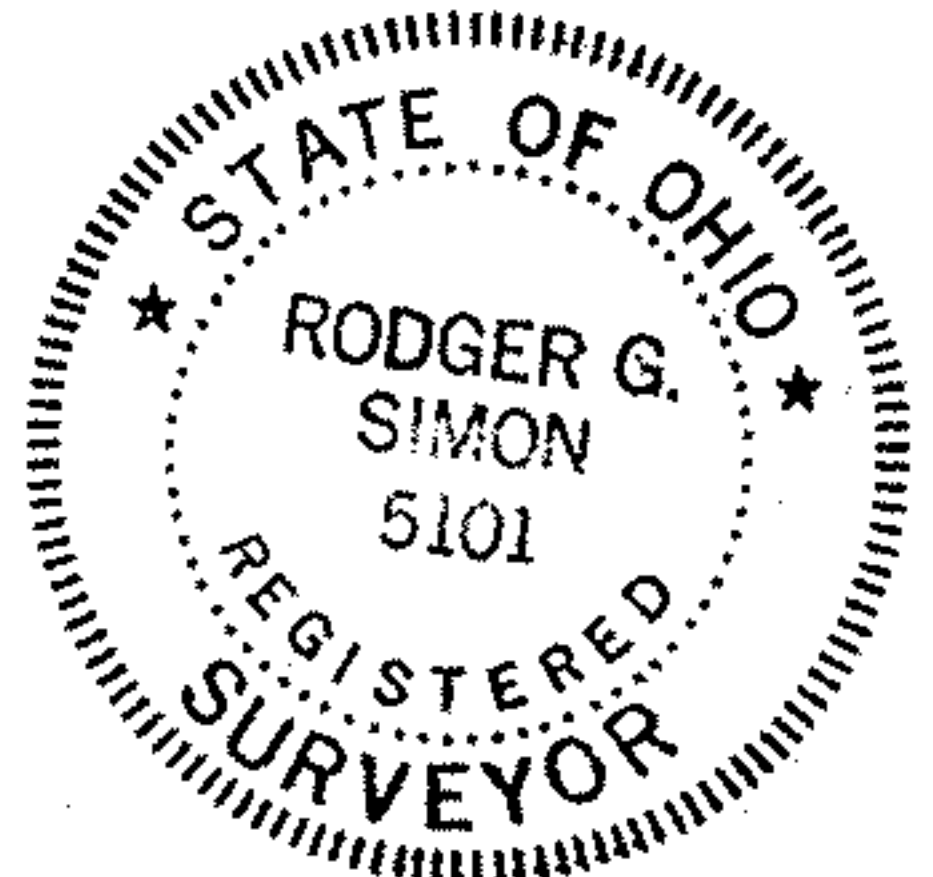
Orig. Lot 8	City of ELYRIA	Date DEC. 1988 Scale 1"=60'
Orig. Sec	Village of	Dwn. by R.G.S. Chkd. by C.J.
Tract BURRELL & DAY	County of LORAIN	Job No. 88-1768 F.B.
Township of ELYRIA	State of OHIO	Printed DEC 05 1988

06-22-008-102-018



#18281

APPROVED LORAIN CO. MAP DEPT.
DATE 1-10-89
PAGE 6-15
BY (Rodger Simon)
VOID AFTER #18281



#18281