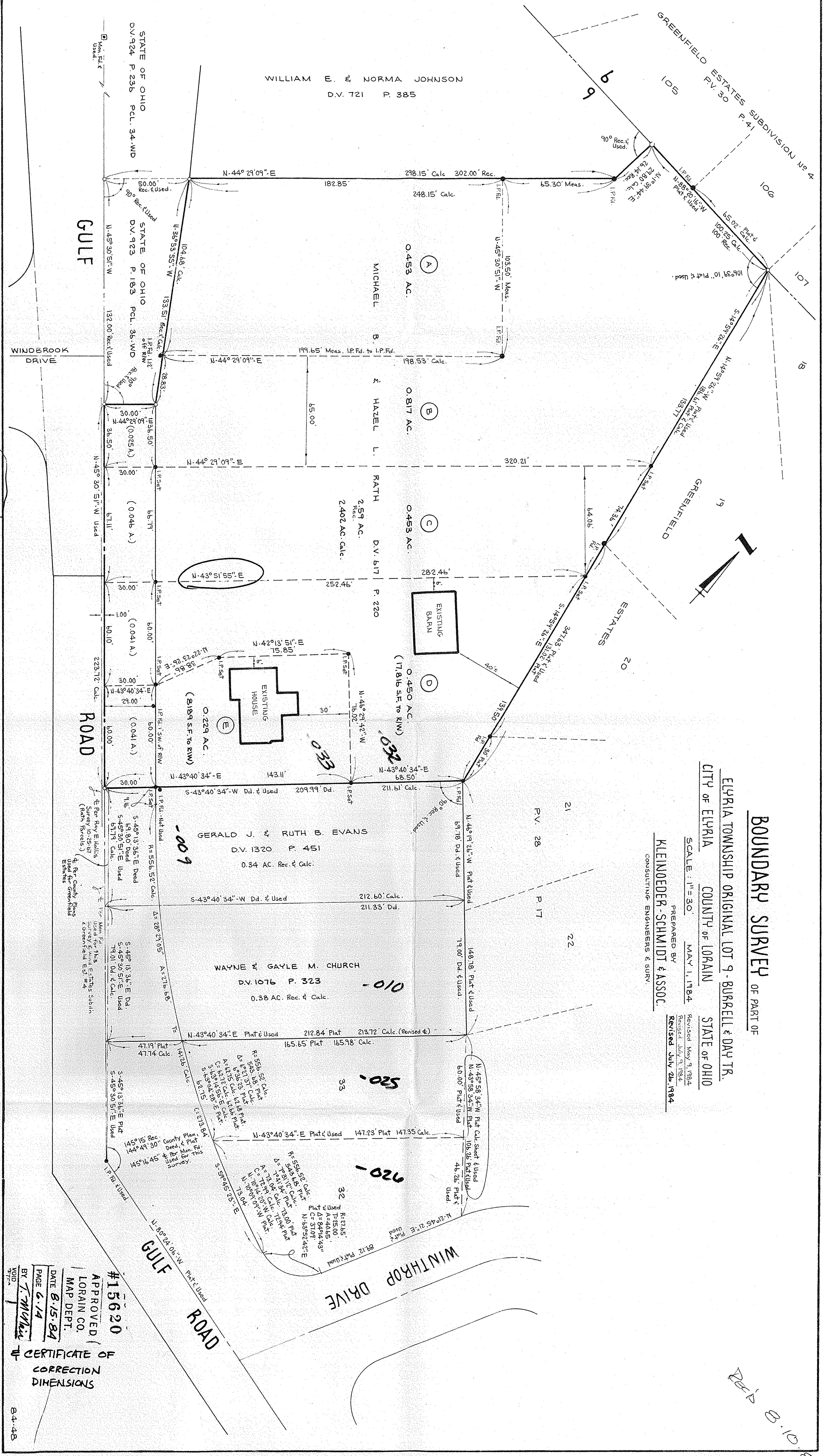


BOUNDARY SURVEY OF PART OF

ELYRIA TOWNSHIP ORIGINAL LOT 9 - BURRELL & DAY TR.
 CITY OF ELYRIA COUNTY OF LORAIN STATE OF OHIO

SCALE: 1"=30'
 MAY 1, 1984
 PREPARED BY
 KLEINODER-SCHMIDT & ASSOC.
 CONSULTING ENGINEERS & SURV.
 Revised May 9, 1984
 Revised July 9, 1984
 Revised July 25, 1984



#15620
 APPROVED
 LORAIN CO.
 MAP DEPT.
 DATE 8-15-84
 PAGE 6-14
 BY T. McPhail
 CERTIFICATE OF CORRECTION DIMENSIONS

REV'D 8.10.84