

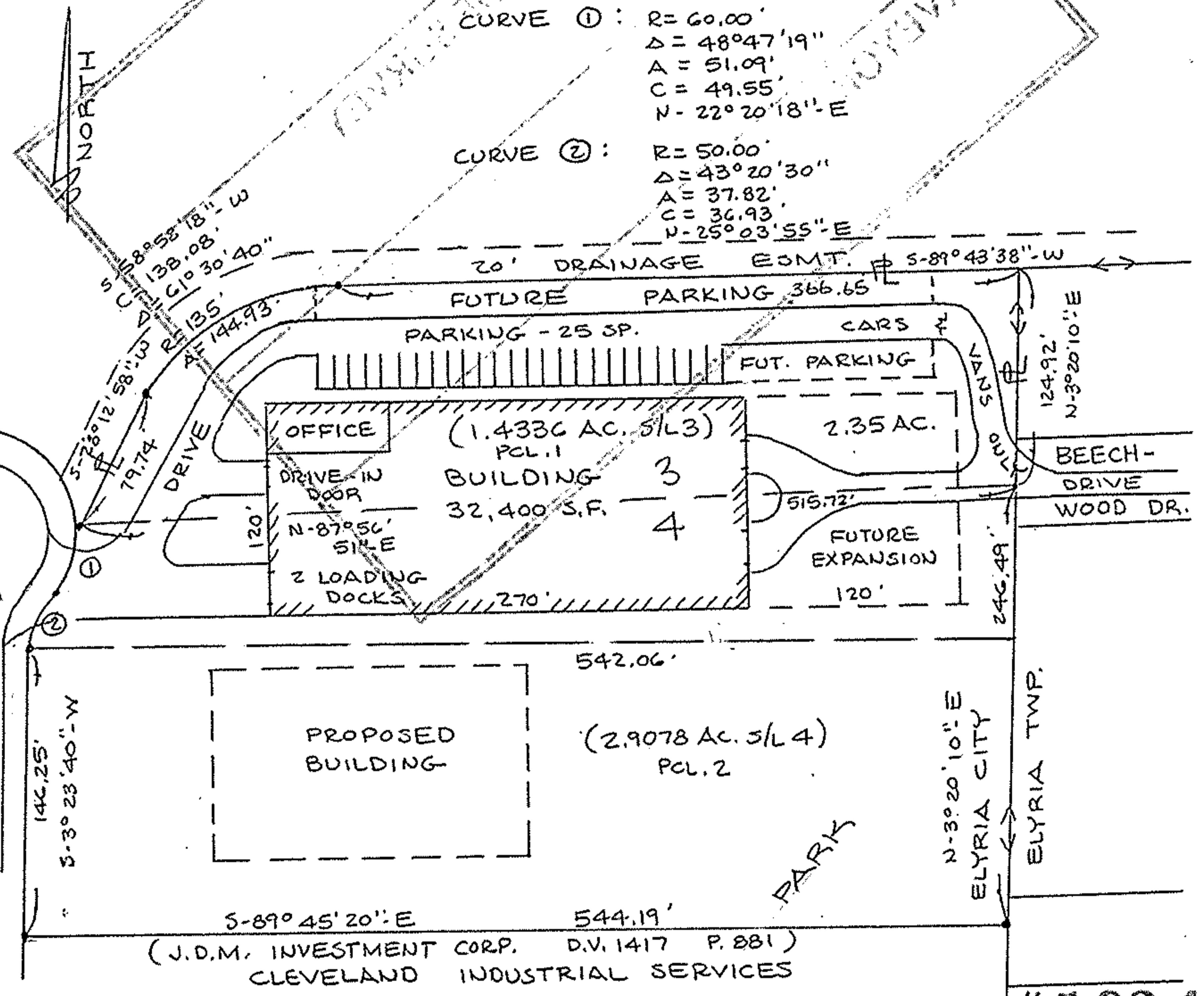
Logos

06-22-008-106-030

PRELIMINARY SITE DEVELOPMENT PLAN
LOGOS DEVELOPMENT CORP.
ELYRIA OHIO

PHONE 216-324-3550
ROBERT P. GRAHAM

#19244 06-27-016-000-
SHALMET OHIO --23-008-106-
WESTERN WORLD TRANSFORMER
STRONG TOOL
FREEDOM COURT



#19244

APPROVED
LORAIN CO.
MAP DEPT.

DATE 1-4-91

PAGE 6-8 6-2
KLEINOEDER-SCHMIDT & ASSOC. CARDLYN
FOR MIDWAY INDUSTRIAL PARK FRANCIS

VOID AFTER #19244

THE DATA BASED ON
SURVEY BY
KLEINOEDER-SCHMIDT & ASSOC.
FOR MIDWAY INDUSTRIAL PARK
P.V.36 P.17 & 18