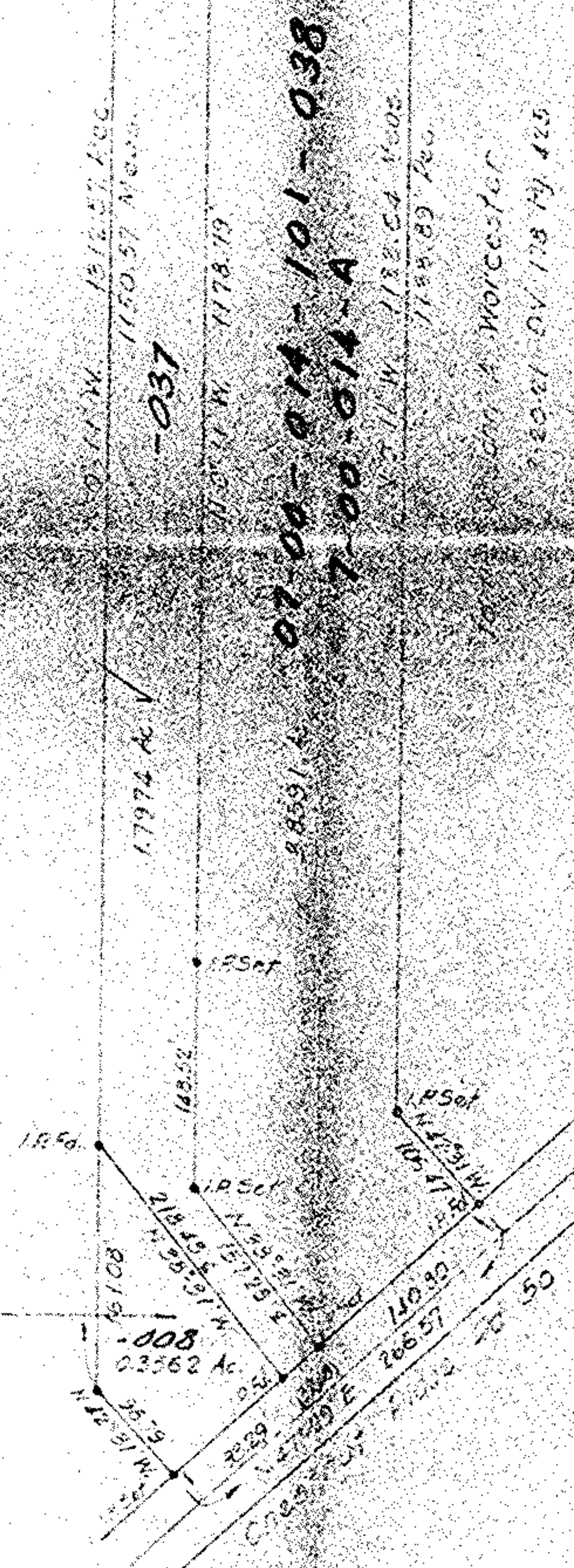


07-00-014-101-038, 037  
 Split # 13506  
 Map # 07-00-014-A



See record of G. Chapman  
 D.V. 967 P. 219



John D. Kallish  
 D.V. 437 P. 342

#13506  
 APPROVED  
 LORAIN CO.  
 MAP DEPT.  
 DATE 4-7-50  
 PAGE 7-00-014-A  
 BY T. M. Hair  
 VOID  
 AFTER

SURVEY FOR GERTRUDE WORCESTER  
 OL. 14 RIDGEVILLE TOWNSHIP  
 CITY OF N. RIDGEVILLE - LOR. CO. - OHIO  
 SCALE 1"=100' SEPT. 1913.  
 LAUNDON • SIMON • CARR & ASSOC.  
 ENGINEERS - SURVEYORS

SEP 12 1973

7-00-014