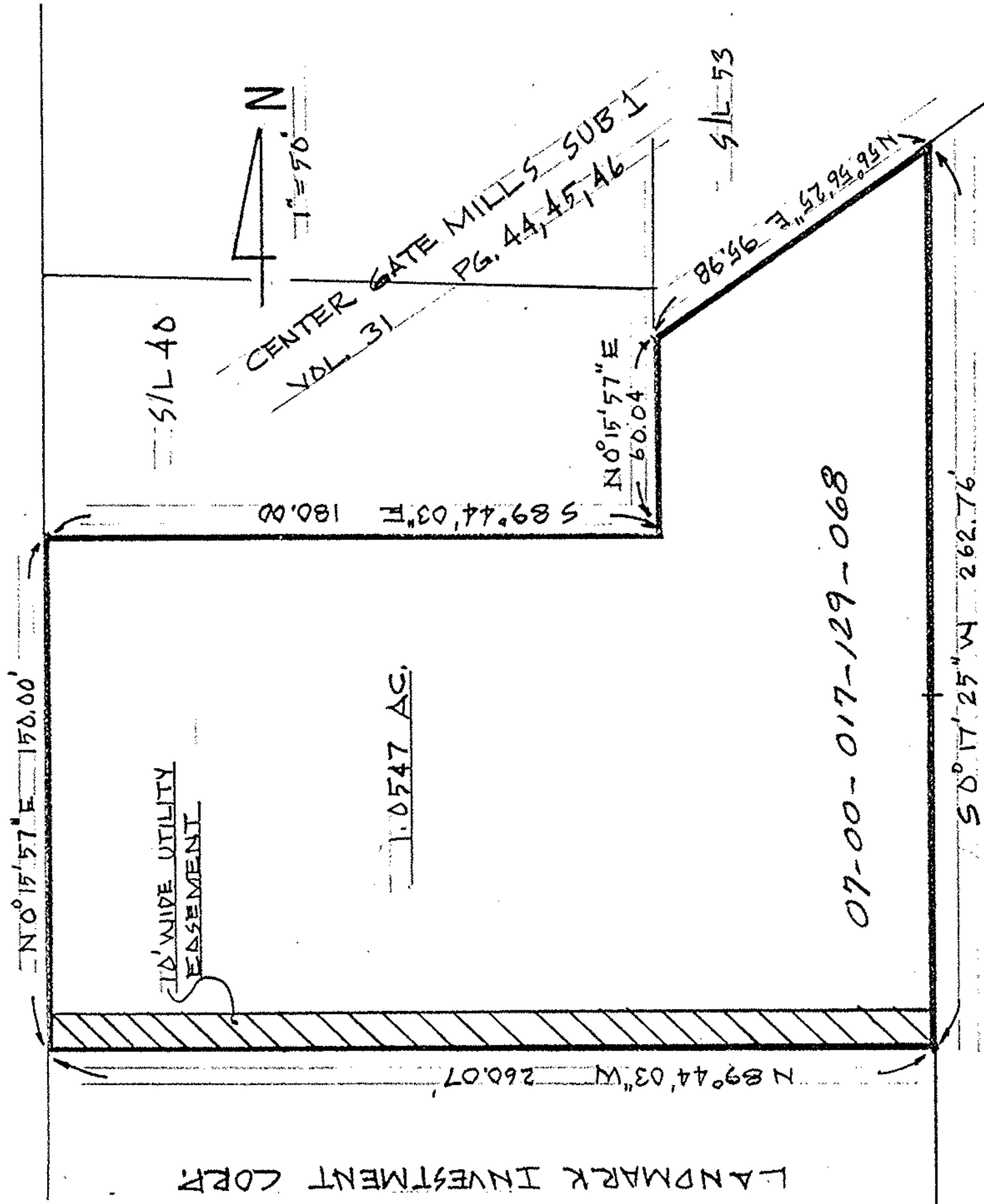


7-00-017-D

MICHAEL ZUNICH & ASSOCIATES

35836 Center Ridge Road • North Ridgeville, Ohio 44039 • (216) 327-7740

EMERALD ST. GO ROW



LANDMARK INVESTMENT CORP

20' WIDE UTILITY EASEMENT

1.0547 AC.

S/L 40



1" = 70'

CENTER GATE MILLS SUB 1  
VOL. 31 PG. 44, 45, 46

N 0° 15' 57" E  
60.04

S 89° 44' 03" E  
180.00

S/L 53

N 56° 56' 25" E  
95.98

07-00-017-129-068

S 0° 17' 25" W 262.76

FRANK & JANET PORRELLI  
VOL. 1026 PG. 94

PORT CITY LEASING INC  
VOL. 952 PG 818

#14348

PARCEL MAP  
ORIGINAL RIDGEVILLE LOT 17  
CITY OF NORTH RIDGEVILLE

07-00-017-129

APPROVED	
LORAIN CO.	
MAP DEPT.	
DATE 8-11-81	
PAGE 7-00-017-D	
BY <i>Candy</i>	
VOID AFTER	