

8807

Irby C. Kee Jr.
09-00-081-000-003
28.36 Ac.
Vol. 1015, Pg. 417

Parcel 3
22.22 Ac.
-005
JUN 17 1975
Alma Osmer
-007
V. 978 Pg. 970

Parcel #1
20.00 Ac.
-002
JUN 17 1975
V. 978 Pg. 970

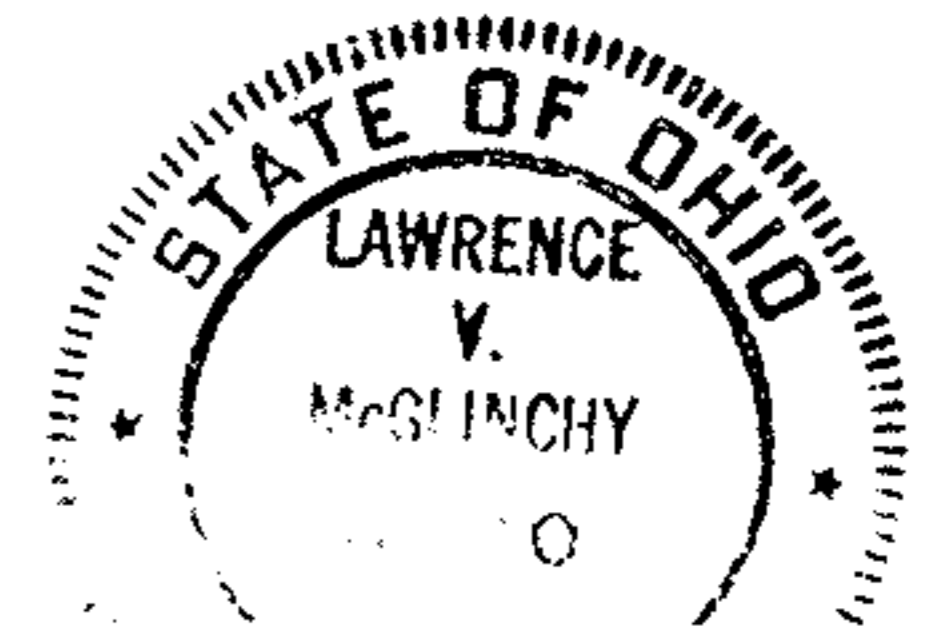
Parcel #1
20.00 Ac.
-007
V. 941, Pg. 814

Parcel #1
V. 941, Pg. 814
Kee, Jr.
-014

Quarry Road 60'

Sold to Willie Jackson

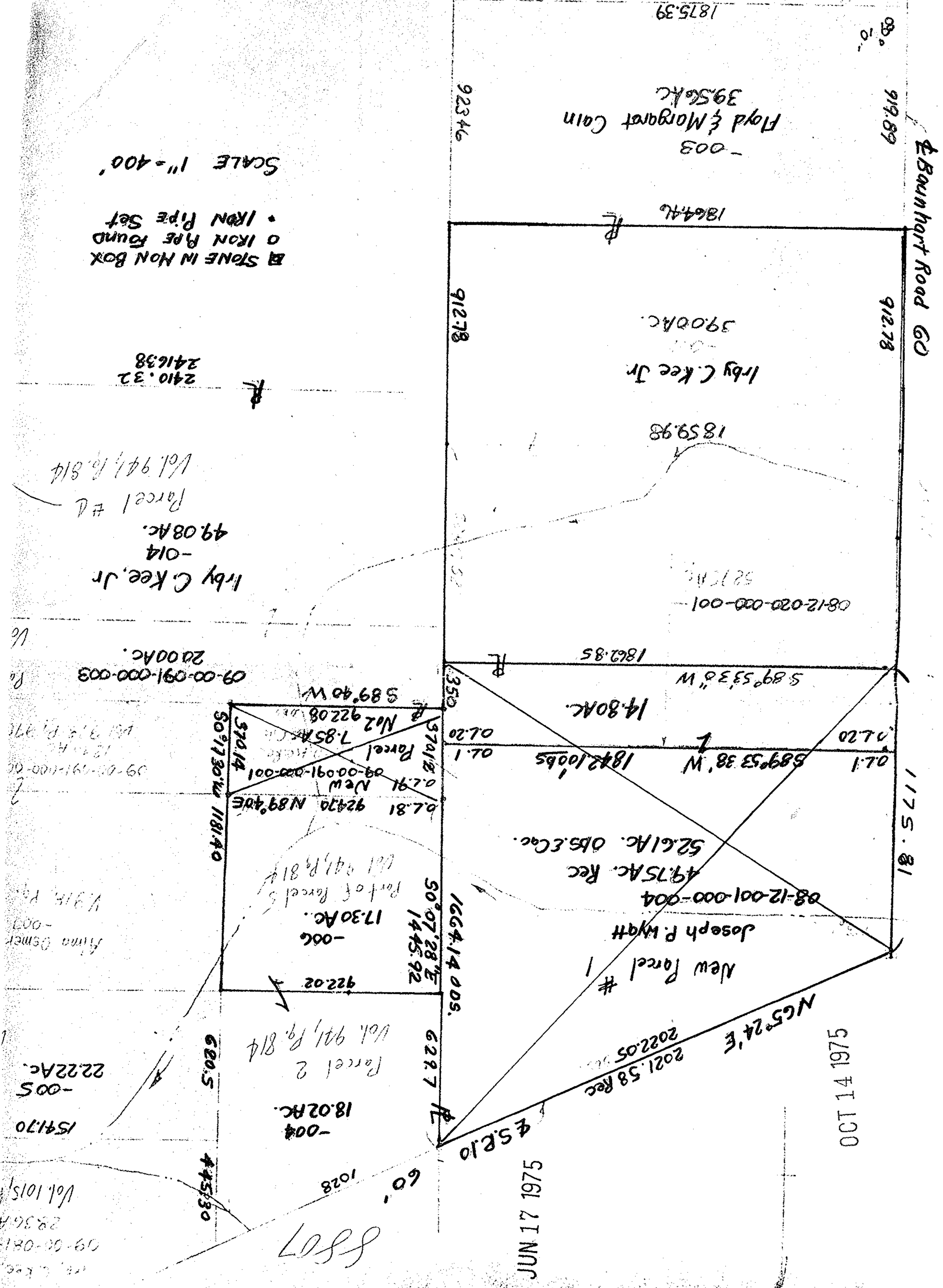
#.P.#
08-12-001-000-004
-020-000-001, 003
09-00-081-000-003
200, 100 & 00-000-003, 001, 002



08-12-001-001-020
09-00-00-00-00

1" = 400'

08-12-001-020



SCALE 1" = 400'

STONE IN HON BOX
0 IRON PIPE FOUND
• IRON PIPE SET

2410.32
2416.38

Parcel #1
49.08 Ac.
-014
Irby C. Kee, Jr.

Parcel #1
20.00 Ac.
-003
09-00-091-000-003

Parcel #1
17.30 Ac.
-006
Alma Osmer

Parcel 2
22.22 Ac.
-005
154170

Parcel 2
28.36 Ac.
-081
09-00-081-000-003

8807

JUN 17 1975

OCT 14 1975

1175.81

Bainhart Road 60'

923.46

912.78

350

1664.14 005

622.7

1028

60'

458.10

445.30

680.5

574.14

574.14

589.40 W

7.85

0.291

0.291

0.291

0.291

0.291

0.291

0.291

0.291

0.291

0.291

0.291

0.291

0.291

0.291

0.291

0.291

0.291

0.291

0.291

0.291

0.291

0.291

0.291

0.291

0.291

0.291

0.291

0.291

0.291

0.291

0.291

0.291

0.291

0.291

0.291

0.291

0.291

0.291

0.291

0.291

0.291

0.291

0.291

0.291

0.291

0.291

0.291

0.291

0.291

0.291

0.291

0.291

0.291

0.291

0.291

0.291

0.291

0.291

0.291

0.291

0.291

0.291

0.291

0.291

0.291

0.291

0.291

0.291

0.291

0.291

0.291

0.291

0.291

0.291

0.291

0.291

0.291

0.291

0.291

0.291

0.291

0.291

0.291

0.291

0.291

0.291

0.291

0.291

0.291

0.291

0.291

0.291

0.291

0.291

0.291

0.291

0.291

0.291

0.291

0.291

0.291

0.291

0.291

0.291

0.291

0.291

0.291

0.291

0.291

0.291

0.291

0.291

0.291

0.291

0.291

0.291

0.291

0.291

0.291

0.291

0.291

0.291

0.291

0.291

0.291

0.291

0.291

0.291

0.291

0.291

0.291

0.291

0.291

0.291

0.291

0.291

0.291

0.291

0.291

0.291

0.291

0.291

0.291

0.291

0.291

0.291

0.291

0.291

0.291

0.291

0.291

0.291

0.291

0.291

0.291

0.291

0.291

0.291

0.291

0.291

0.291

0.291

0.291

0.291

0.291

0.291

0.291

0.291

0.291

0.291

0.291

0.291

0.291

0.291

0.291

0.291

0.291

0.291

0.291

0.291

0.291

0.291

0.291

0.291

0.291

0.291

0.291

0.291

0.291

0.291

0.291

0.291

0.291

0.291

0.291

0.291

0.291

0.291

0.291

0.291

0.291

0.291

0.291

0.291

0.291

0.291

0.291

0.291

0.291

0.291

0.291

0.291

0.291

0.291

0.291

0.291

0.291

0.291

0.291

0.291

0.291

0.291

0.291

0.291

0.291

0.291

0.291

0.291

0.291

0.291

0.291

0.291

0.291

0.291

0.291

0.291

0.291

0.291

0.291

0.291

0.291

0.291

0.291

0.291

0.291

0.291

0.291

0.291

0.291

0.29