

KLEINOEDER · SCHMIDT

and ASSOCIATES

ENGINEERS — SURVEYORS — CONSULTANTS IN LAND PLANNING

ELYRIA · NORWALK · MEDINA

OHIO

16496 SURVEY

7B

Sublot(s) _____

Subd'n _____

Township RIDGEVILLE

Orig. Lot(s) 30

County of LORAIN

Corporation _____

Tract _____

Sec. _____

State of Ohio _____

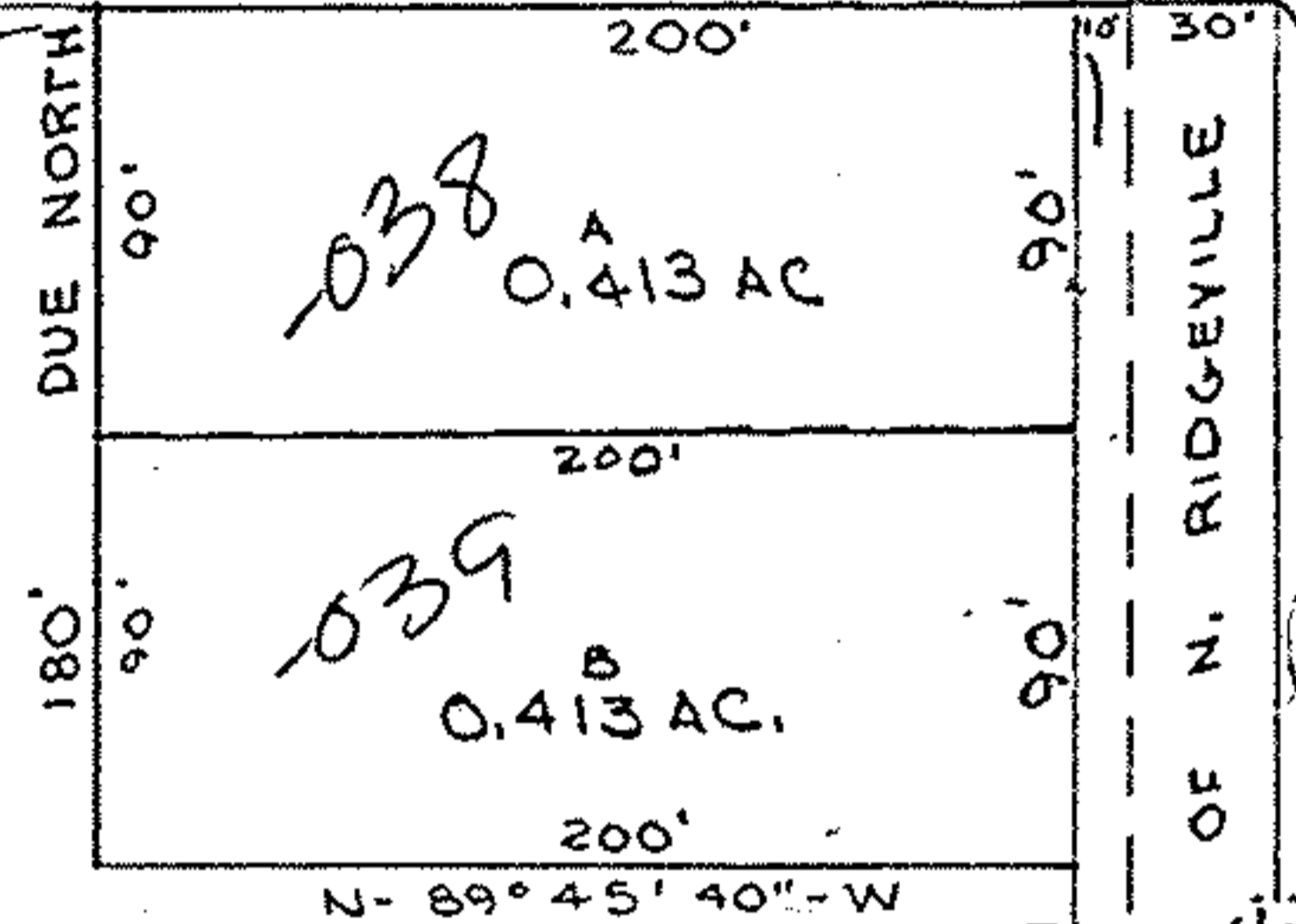
07-00-030-00-038 thru 041

MAY 13 1977

THOMAS J. & ELSIE HUGHES
D.V. 858 P. 544

N - 89° 45' 40" - W

1235.50'



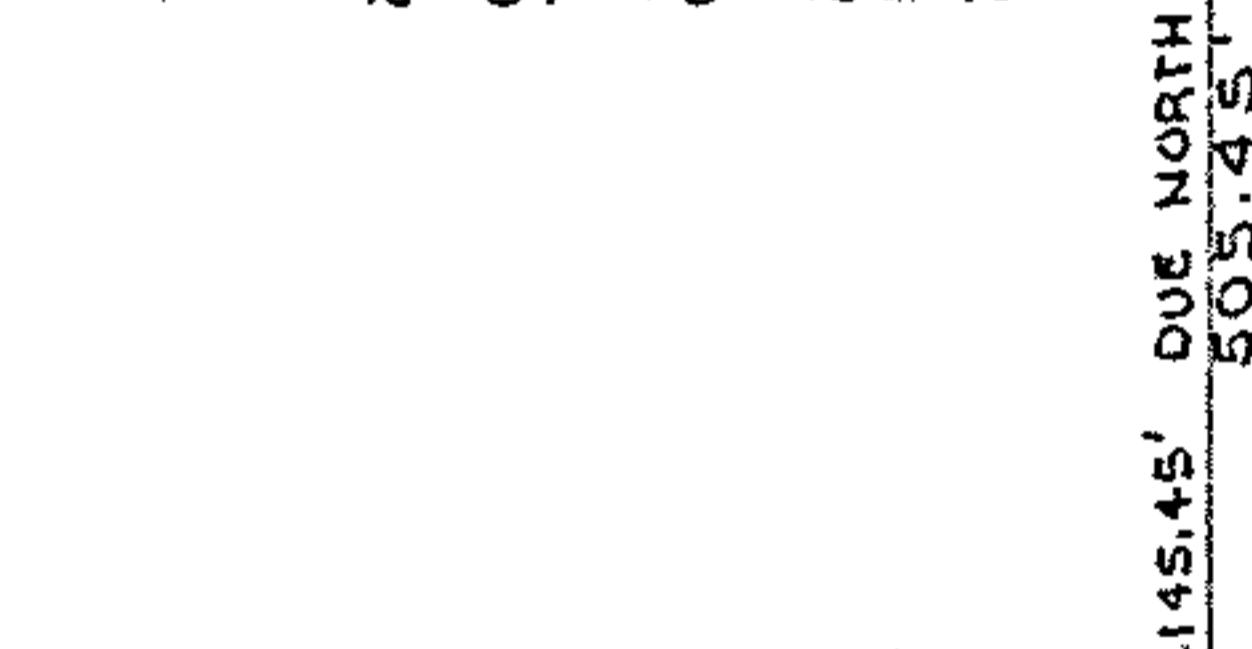
038
A
0.413 AC.

039
B
0.413 AC.

N - 89° 45' 40" - W
200'

EDWARD SMITEK
D.V. 1030 P. 127
15.028 AC.

DUE SOUTH
505.45'



S - 89° 45' 40" - E
200'

DUE NORTH
90'

180' 90'

DUE NORTH
90'

200'

90'

145.45' DUE NORTH
505.45'

200'

90'

200'

90'

180' 90'

DUE NORTH
90'

200'

90'

200'

90'

180' 90'

DUE NORTH
90'

200'

90'

200'

90'

180' 90'

DUE NORTH
90'

200'

90'

200'

90'

1235.50'
S - 89° 45' 40" - E

BERTHA G. & HELEN E. BOMMER
D.V. 684 P. 522

PARCEL CONVEYED TO CITY OF N. RIDGEVILLE 30' 60'

16496

AVON BELDEN ROAD

7-00-030-00

7-13

Prepared for: EDWARD SMITEK

Scale: 1" = 100'

Date: 9-17-76

Dr. by: P.M.

Job No 76-240