

PP NO. 01-00-066-01-014

NORTH

CITY OF NORTH RIDGEVILLE D.V. 1097 P. 613
(WALTER M. HORWEDEL D.V. 311 P. 28 PCL. 3)

N-1°14'40"W

I.P. set

558.00'
Plat & Used

284.50

234.50'
Plat & Used

PIKE LAKE
ALLOT.

17

PAUL C. & PHYLLIS L. KRUEGER
D.V. 431 P. 462

KRUEGER DRIVE 50'

N-1°14'40"W

P.V. 21
P. 45
16

BOUNDARY SURVEY

PART OF RIDGEVILLE TWP.
ORIG. LOT NO. 22
CITY OF NORTH RIDGEVILLE
COUNTY OF LORAIN
STATE OF OHIO

PREPARED BY
KLEINOEDER - SCHMIDT & ASSOC.
CONSULTING ENGINEERS & SURVEYORS

SURVEYS MADE : FEB. 1972
NOV. 1977

#15379

APPROVED
LORAIN CO.
MAP DEPT.

DATE 12-20-83

PAGE 7-00-022-B

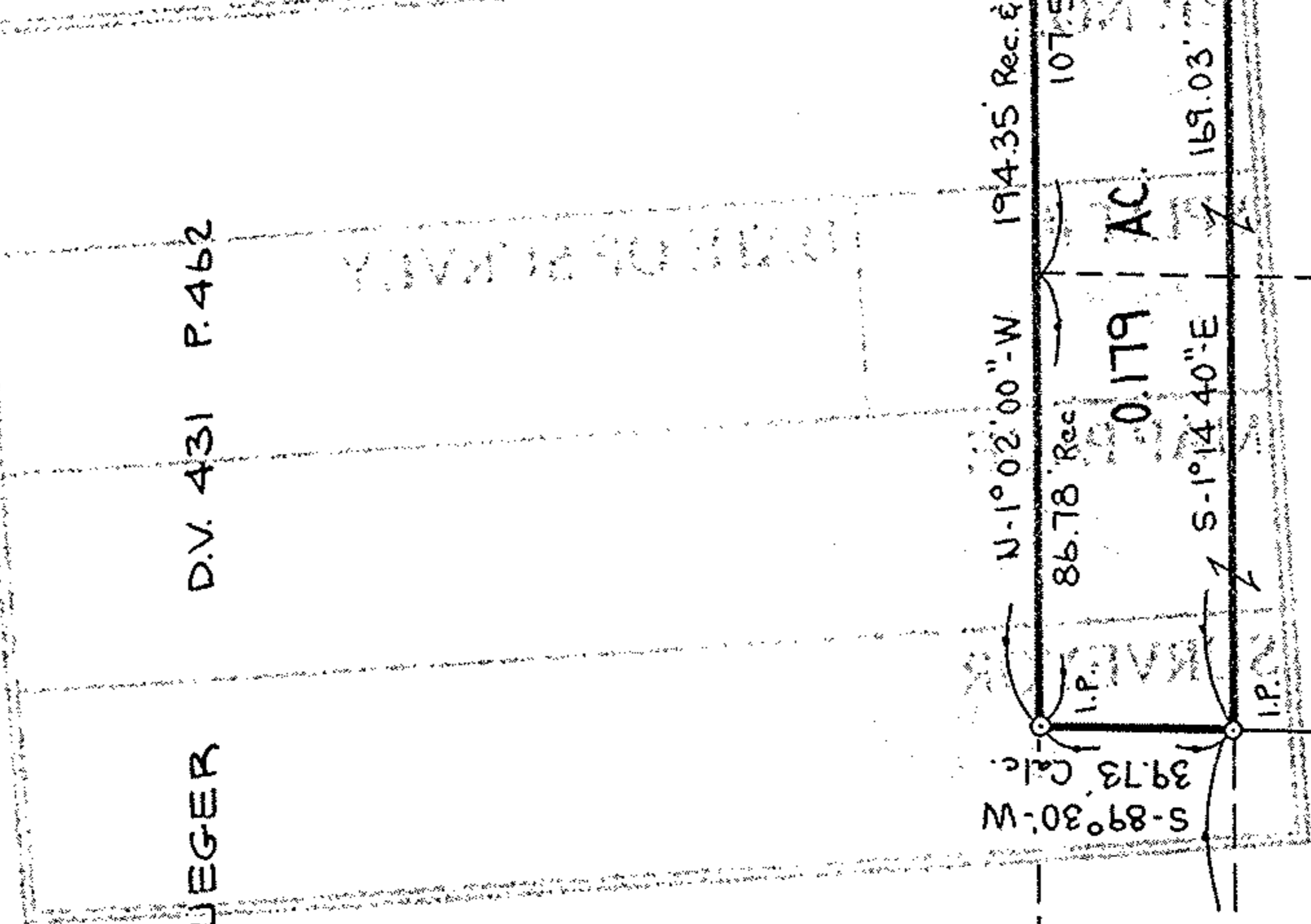
BY T. McMan

VOID

1149.72' Rec. 1155.58' Meas. & Used

502.57'

I.P. set



JOHN G. & VERONICA J.
KOMZAK
D.V. 576 P. 504

D.V. 1132 P. 546

ROAD

BAINBRIDGE
CITY

± SURVEY PLAT : 1975

ORIG. LOT LINE

22
21

I.P. FD. 1972 Surv. 245.82' Rec. Meas. & Used 246.48' Rec.

I.P. FD. 1972 Surv.

± SURV. 25+34.45

± SURV. 25+34.45

± SURV. 25+34.45

± SURV. 25+34.45

± SURV. 25+34.45

± SURV. 25+34.45

± SURV. 25+34.45

± SURV. 25+34.45

± SURV. 25+34.45

± SURV. 25+34.45

± SURV. 25+34.45

± SURV. 25+34.45

± SURV. 25+34.45

± SURV. 25+34.45

± SURV. 25+34.45

± SURV. 25+34.45

± SURV. 25+34.45

± SURV. 25+34.45

± SURV. 25+34.45

± SURV. 25+34.45

± SURV. 25+34.45

± SURV. 25+34.45

± SURV. 25+34.45

± SURV. 25+34.45

± SURV. 25+34.45

± SURV. 25+34.45

± SURV. 25+34.45

± SURV. 25+34.45

± SURV. 25+34.45

± SURV. 25+34.45

± SURV. 25+34.45

± SURV. 25+34.45

± SURV. 25+34.45

± SURV. 25+34.45

± SURV. 25+34.45

± SURV. 25+34.45

± SURV. 25+34.45

± SURV. 25+34.45

± SURV. 25+34.45

± SURV. 25+34.45

± SURV. 25+34.45

± SURV. 25+34.45

± SURV. 25+34.45