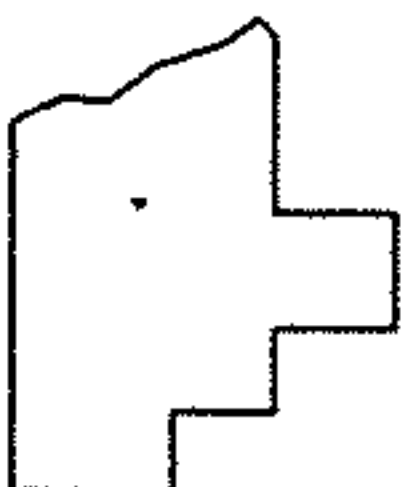
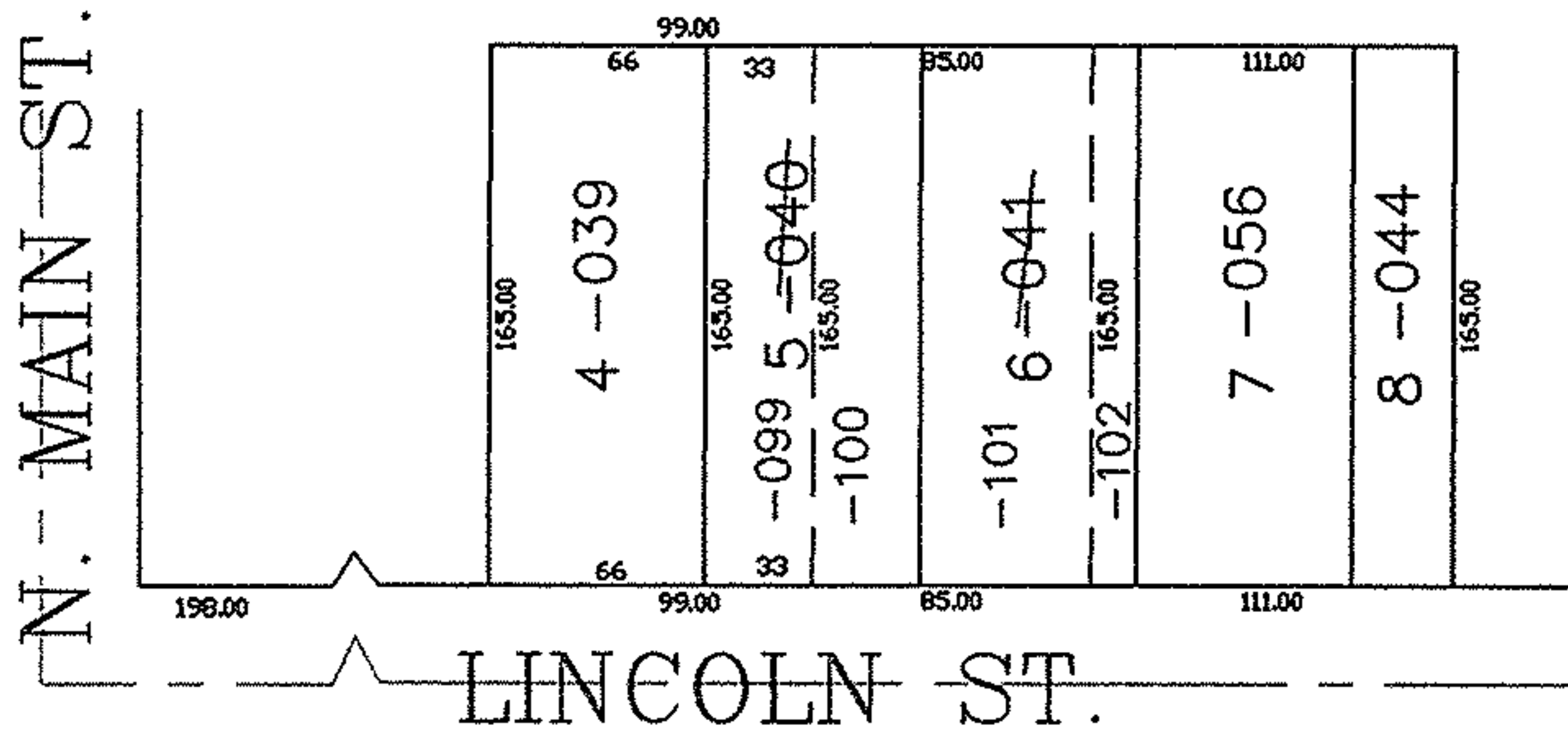
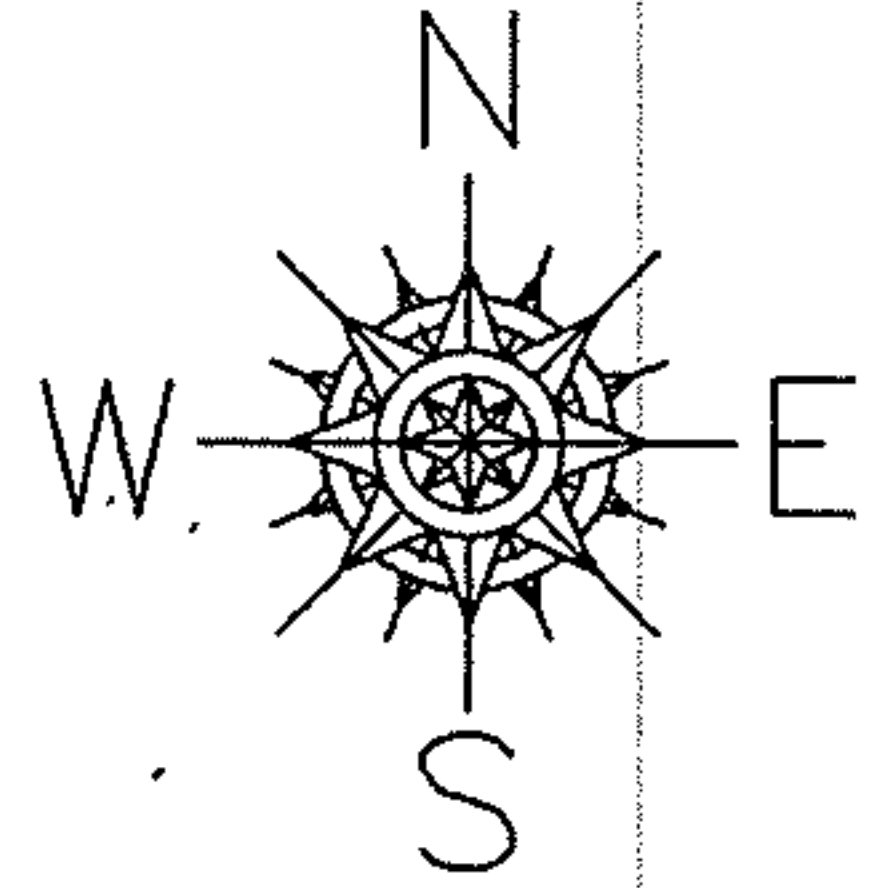


PARENT PARCEL: 18-00-021-101-040, -041

CHILD PARCEL: 18-00-021-101-099 THRU -102

STARTING POINT: SIDELINE OF N MAIN ST. & LINCOLN ST.

NO. 01749



SPLITS/DEEDS PROCESSED

LORAIN COUNTY TAX MAP DEPARTMENT
226 MIDDLE AVE. ELYRIA, OHIO

SURVEYED BY: THOMAS A. SIMON

CLOSURE: 0.00 : 10.000

MAP PAGE(S): 18-00-021-A

APPROVED BY: JAH DATE: 8-30-04

SCALE: 1" = 100 PRIOR INSTRUMENT: PL 1 PG 40