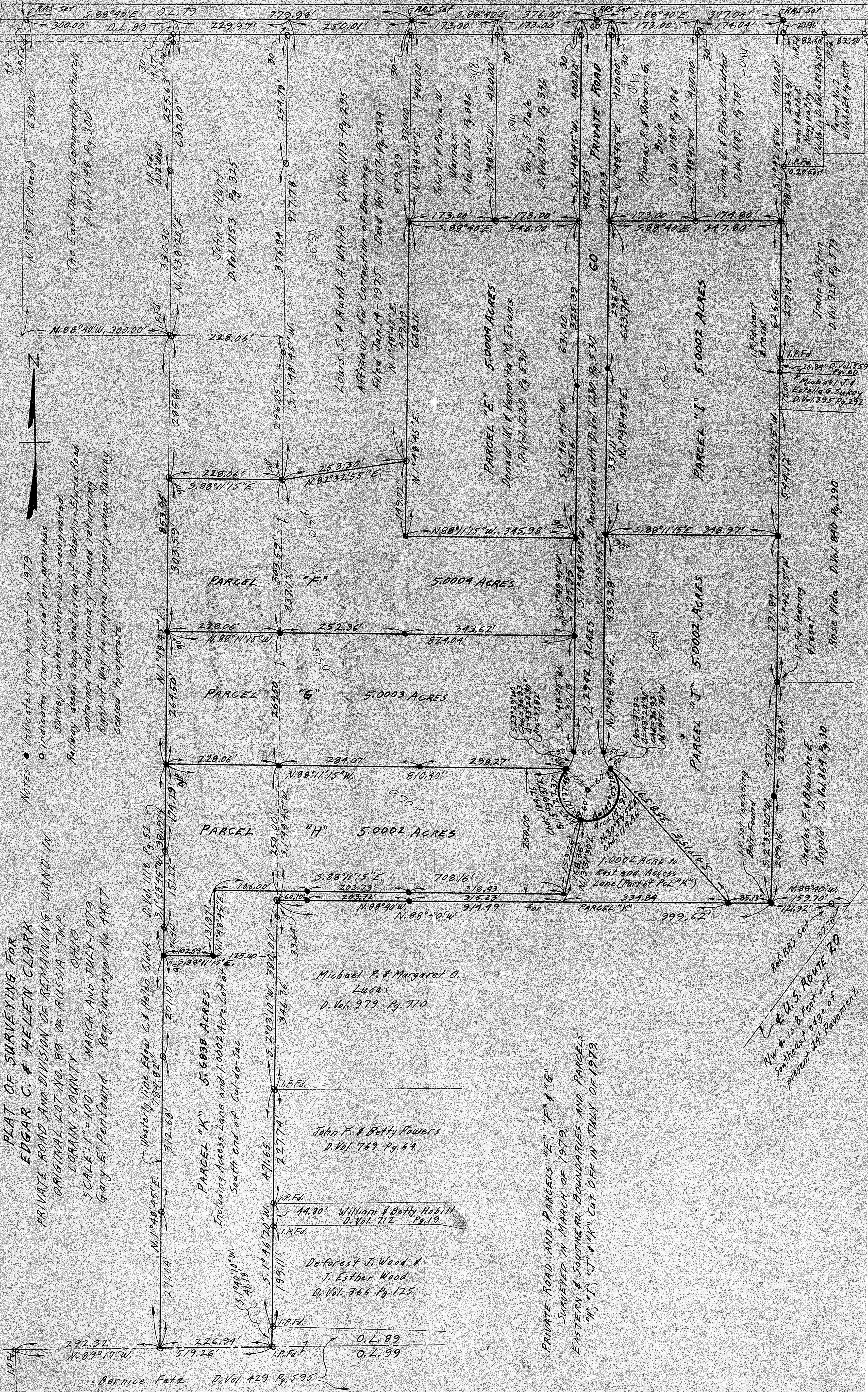


About 953.15' Easterly from Northwesterly corner of O.L. 89

NOTE: R/W & is about 4 feet South of Pavement E.

OBERLIN-ELYRIA ROAD STATE ROUTE 10 60' R/W



PLAT OF SURVEYING FOR EDGAR C. & HELEN CLARK PRIVATE ROAD AND DIVISION OF REMAINING LAND IN ORIGINAL LOT NO. 89 OF RUSSIA TWP. LORAIN COUNTY OHIO SCALE: 1" = 100' MARCH AND JULY, 1979 Gary E. Penfound Reg. Surveyor No. 4457

Westerly line Edgar C. & Helen Clark D. Vol. 1118 Pg. 52

PARCEL "K" 5.6838 ACRES Including Access Lane and 1.0002 Acre Lot at South end of Cul-de-Sac

Michael P. & Margaret O. Lucas D. Vol. 979 Pg. 710

John F. & Betty Powers D. Vol. 769 Pg. 64

William & Betty Hobill D. Vol. 712 Pg. 19

DeForest J. Wood & J. Esther Wood D. Vol. 366 Pg. 125

Bernice Fatz D. Vol. 429 Pg. 595

PRIVATE ROAD AND PARCELS "E", "F" & "G" SURVEYED IN MARCH OF 1979, EASTERN & SOUTHERN BOUNDARIES AND PARCELS "H", "I", "J" & "K" CUT OFF IN JULY OF 1979.

R/W & is 8 Feet off present 24' Pavement

NOTES: • indicates iron pin set in 1979 ○ indicates iron pin set on previous surveys unless otherwise designated. Railway deeds along South side of Oberlin-Elyria Road contained reversionary clauses returning Right-of-Way to original property when Railway ceased to operate.

RRS Set 5.88°40'E. 0.L. 79 300.00' 0.L. 89 229.97' 779.99' 250.01' RRS Set 5.88°40'E. 376.00' 173.00' 173.00' RRS Set 5.88°40'E. 377.04' 173.00' 174.04' RRS Set 2796' 82.50'

PARCEL "E" 5.0009 ACRES Donald W. & Veneta M. Evans D. Vol. 1230 Pg. 530

PARCEL "F" 5.0004 ACRES Louis S. & Ruth A. White D. Vol. 1113 - Pg. 295 Affidavit for Correction of Bearings Filed Jan. 14 - 1975 Deed Vol. 1117 - Pg. 294

PARCEL "G" 5.0003 ACRES John C. Hunt D. Vol. 1153 Pg. 325

PARCEL "H" 5.0002 ACRES Michael P. & Margaret O. Lucas D. Vol. 979 Pg. 710

PARCEL "I" 5.0002 ACRES James D. & Elsie M. Luther D. Vol. 1182 Pg. 787 - Only

PARCEL "J" 5.0002 ACRES Rose Vida D. Vol. 840 Pg. 290

PARCEL "K" 1.0002 ACRES Charles F. & Blanche E. Ingold D. Vol. 864 Pg. 30

Thomas P. & Sharon G. Boyle D. Vol. 1180 Pg. 186

Gary S. Dale D. Vol. 1181 Pg. 346

John H. & Pauline W. Warner D. Vol. 1206 Pg. 886 - 048

John C. Hunt D. Vol. 1153 Pg. 325

James D. & Elsie M. Luther D. Vol. 1182 Pg. 787 - Only

Thomas P. & Sharon G. Boyle D. Vol. 1180 Pg. 186

Gary S. Dale D. Vol. 1181 Pg. 346

John H. & Pauline W. Warner D. Vol. 1206 Pg. 886 - 048

John C. Hunt D. Vol. 1153 Pg. 325

James D. & Elsie M. Luther D. Vol. 1182 Pg. 787 - Only

Thomas P. & Sharon G. Boyle D. Vol. 1180 Pg. 186

Gary S. Dale D. Vol. 1181 Pg. 346

John H. & Pauline W. Warner D. Vol. 1206 Pg. 886 - 048

John C. Hunt D. Vol. 1153 Pg. 325

James D. & Elsie M. Luther D. Vol. 1182 Pg. 787 - Only

Thomas P. & Sharon G. Boyle D. Vol. 1180 Pg. 186

Gary S. Dale D. Vol. 1181 Pg. 346

John H. & Pauline W. Warner D. Vol. 1206 Pg. 886 - 048

John C. Hunt D. Vol. 1153 Pg. 325

James D. & Elsie M. Luther D. Vol. 1182 Pg. 787 - Only

Thomas P. & Sharon G. Boyle D. Vol. 1180 Pg. 186

Gary S. Dale D. Vol. 1181 Pg. 346

John H. & Pauline W. Warner D. Vol. 1206 Pg. 886 - 048

John C. Hunt D. Vol. 1153 Pg. 325

James D. & Elsie M. Luther D. Vol. 1182 Pg. 787 - Only

Thomas P. & Sharon G. Boyle D. Vol. 1180 Pg. 186

Gary S. Dale D. Vol. 1181 Pg. 346

John H. & Pauline W. Warner D. Vol. 1206 Pg. 886 - 048

John C. Hunt D. Vol. 1153 Pg. 325

James D. & Elsie M. Luther D. Vol. 1182 Pg. 787 - Only

Thomas P. & Sharon G. Boyle D. Vol. 1180 Pg. 186

Gary S. Dale D. Vol. 1181 Pg. 346

John H. & Pauline W. Warner D. Vol. 1206 Pg. 886 - 048

John C. Hunt D. Vol. 1153 Pg. 325

James D. & Elsie M. Luther D. Vol. 1182 Pg. 787 - Only

Thomas P. & Sharon G. Boyle D. Vol. 1180 Pg. 186

Gary S. Dale D. Vol. 1181 Pg. 346

John H. & Pauline W. Warner D. Vol. 1206 Pg. 886 - 048

John C. Hunt D. Vol. 1153 Pg. 325

James D. & Elsie M. Luther D. Vol. 1182 Pg. 787 - Only

Thomas P. & Sharon G. Boyle D. Vol. 1180 Pg. 186

Gary S. Dale D. Vol. 1181 Pg. 346

John H. & Pauline W. Warner D. Vol. 1206 Pg. 886 - 048

John C. Hunt D. Vol. 1153 Pg. 325

James D. & Elsie M. Luther D. Vol. 1182 Pg. 787 - Only

Thomas P. & Sharon G. Boyle D. Vol. 1180 Pg. 186

Gary S. Dale D. Vol. 1181 Pg. 346

John H. & Pauline W. Warner D. Vol. 1206 Pg. 886 - 048

John C. Hunt D. Vol. 1153 Pg. 325

James D. & Elsie M. Luther D. Vol. 1182 Pg. 787 - Only