

West

Lorain St.

552.41' E.P.S.A. Rd.

Due East 426.63'

300' 75'

300'

I.P.

N. 1° 03' E.
194.20'

Wm. F. & G.B. Goeman
3-17-70 D.V. 1001-185

9-00-084-101
9-00-084-101

26581 Acres to Φ

375.08'
S. 0° 44' W

James & Ruby C. Reid
3-18-57 D.V. 690 Pg. 646

George & Thelma Carrothers

1-003

S. 37° 34' W
150.0'

N. 52° 26' W
125.00'

S. 72° 25' 50" E.
292.35'

180.03'
N. 86° 0' W

150.00'
N. 51° 51' W

32.00' I.P. 75'
Due West

Leslie R. & Violet H. Bickel
11-29-44 D.V. 342 Pg. 574

M. J. Fitzmarlin et al
1-27-69
D.V. 979 Pgs. 105, 109, 112

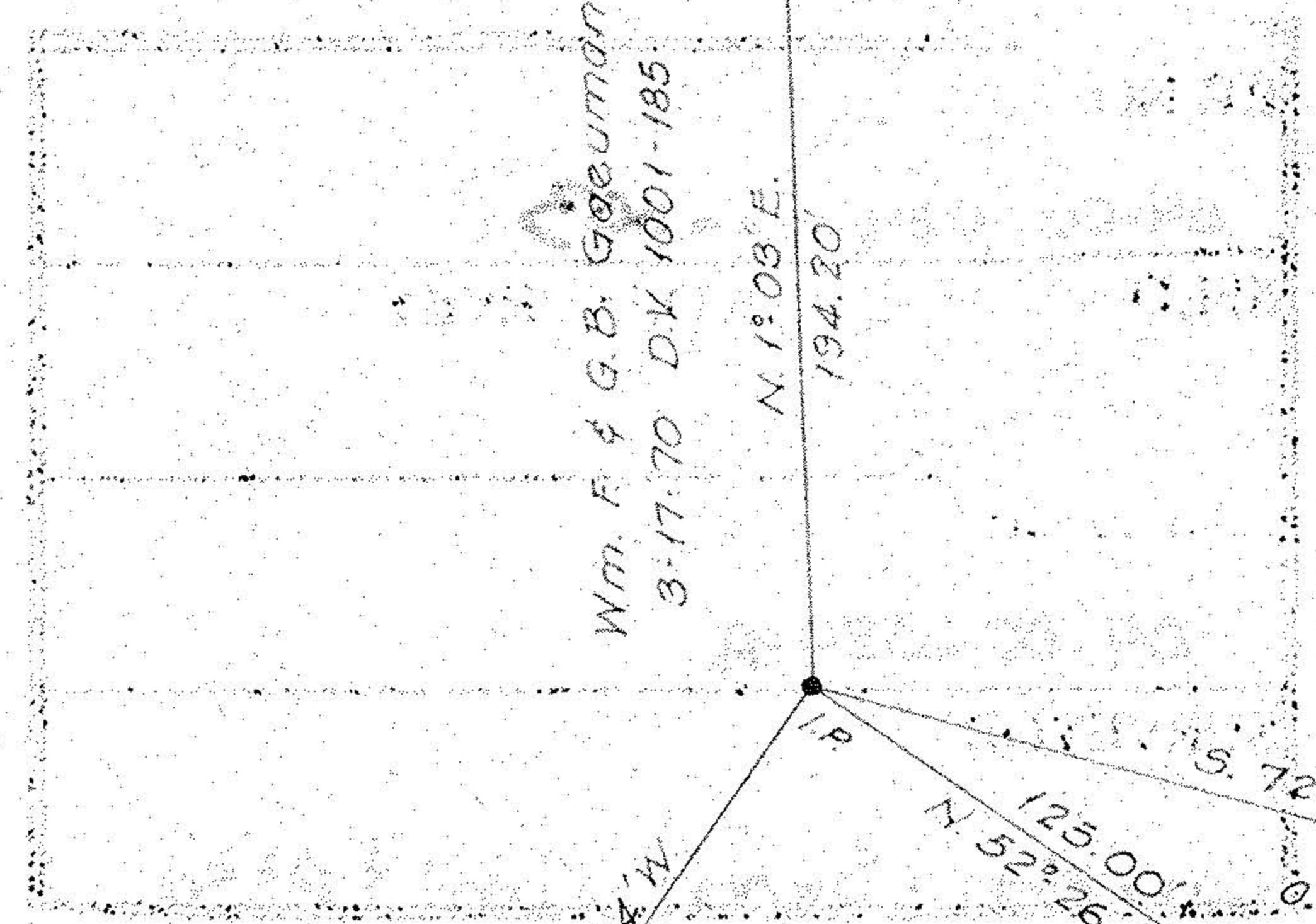
9-00-084-A
9-00-084-101

Survey of Lena E. Gerber lands
Part of O.L. 84
City of Oberlin
Scale 1" = 50'
Laundon Simon Cahl & Assoc. Engineers-Surveyors

JAN 8 1975

J.N. 73-81

Revised 1/8/75 74379



West

College St.
S. 52° 26' E.
60'