

SURVEY FOR  
**NATIONAL ASSOCIATION OF COLLEGE STORES, INC.**

PART OF O.L. 77 TOWNSHIP OF RUSSIA CITY OF OBERLIN COUNTY OF LORAIN  
STATE OF OHIO

SCALE 1" = 50'

AUGUST 28, 1985

LAUNDON • SIMON • CAHL & ASSOC.

ENGINEERS

SURVEYORS



CITY OF OBERLIN

87° 49'

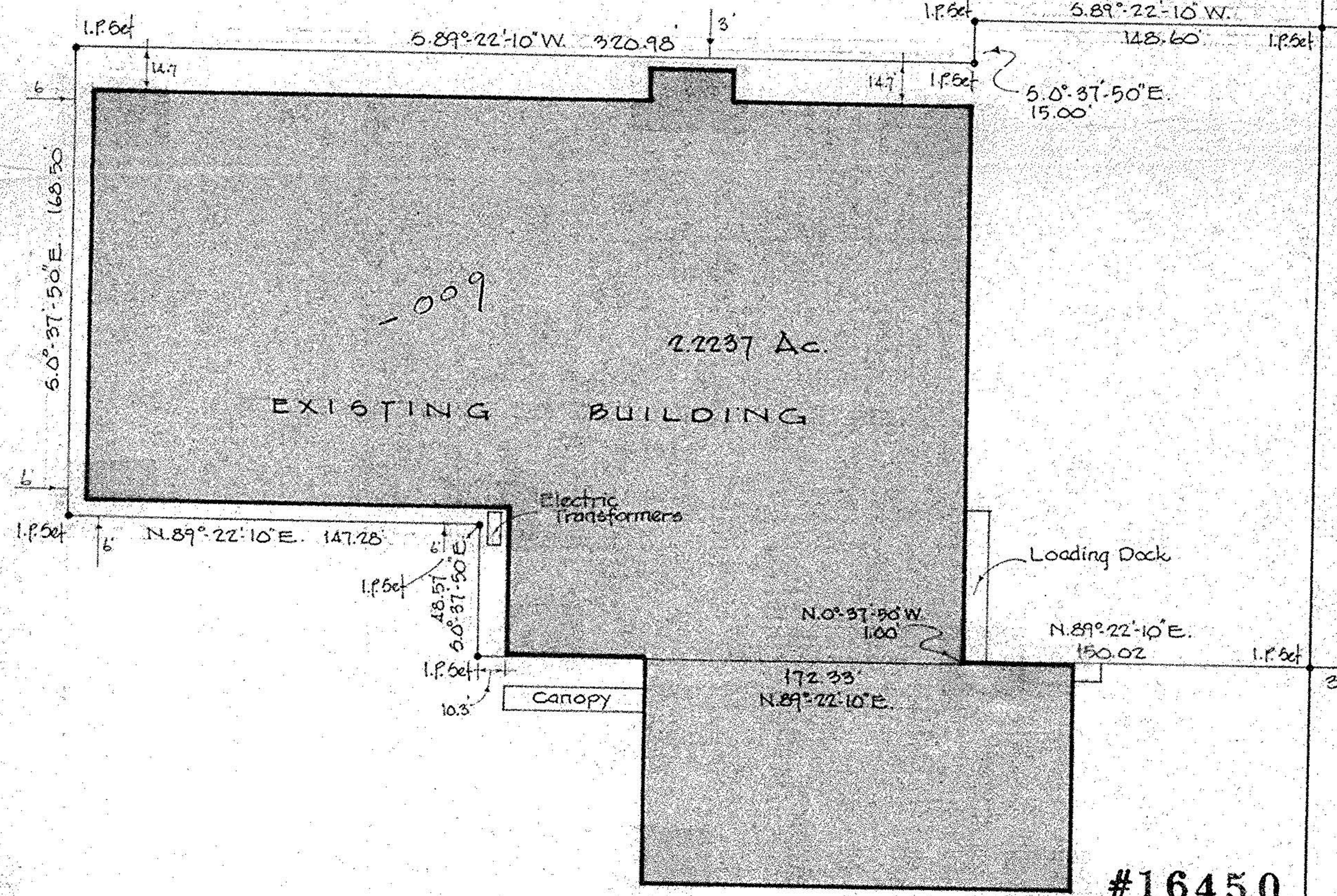
REMAINDER

N. A. C. S.

PROPERTY

-010  
10.44A

09-00-077-102-



EAST LORAIN ST. 60'

#16450

APPROVED  
LORAIN CO.  
MAP DEPT

11-6-85

9-00-077-B

BY C. Francis

VOID  
AFTER

M.B.

SEP 16 1985

85-1416

195

OBERLIN RD. 60'

154.61

231.07  
N. 0° 38' 30" W.

155.84

539.62'

1.00'

1.00'

1.00'

1.00'

1.00'

1.00'

1.00'

1.00'

1.00'

1.00'

1.00'

1.00'

1.00'

1.00'

1.00'

1.00'

1.00'

1.00'

1.00'

1.00'

1.00'

1.00'

1.00'

1.00'

1.00'

1.00'

1.00'

1.00'

1.00'

1.00'

1.00'

1.00'

1.00'

1.00'

1.00'

1.00'

1.00'

1.00'

1.00'

1.00'

1.00'

1.00'

1.00'

1.00'

1.00'

1.00'

1.00'

1.00'

1.00'

1.00'

1.00'

1.00'

1.00'

1.00'

1.00'

1.00'

1.00'

1.00'

1.00'

1.00'

1.00'

1.00'

1.00'

1.00'

1.00'

1.00'

1.00'

1.00'

1.00'

1.00'

1.00'

1.00'

1.00'

1.00'

1.00'

1.00'

1.00'

1.00'

1.00'

1.00'

1.00'

1.00'

1.00'

1.00'

1.00'

1.00'

1.00'

1.00'

1.00'

1.00'

1.00'

1.00'

1.00'

1.00'

1.00'

1.00'

1.00'

1.00'

1.00'

1.00'

1.00'

1.00'

1.00'

1.00'

1.00'

1.00'

1.00'

1.00'

1.00'

1.00'

1.00'

1.00'

1.00'

1.00'

1.00'

1.00'

1.00'

1.00'

1.00'

1.00'

1.00'

1.00'

1.00'

1.00'

1.00'

1.00'

1.00'

1.00'

1.00'

1.00'

1.00'

1.00'

1.00'

1.00'

1.00'

1.00'

1.00'

1.00'

1.00'

1.00'

1.00'

1.00'

1.00'

1.00'

1.00'

1.00'

1.00'

1.00'

1.00'

1.00'

1.00'

1.00'

1.00'

1.00'

1.00'

1.00'

1.00'

1.00'

1.00'

1.00'

1.00'

1.00'

1.00'

1.00'

1.00'

1.00'

1.00'

1.00'

1.00'

1.00'

1.00'

1.00'

1.00'

1.00'

1.00'

1.00'

1.00'

1.00'

1.00'

1.00'

1.00'

1.00'

1.00'

1.00'

1.00'

1.00'

1.00'

1.00'

1.00'

1.00'

1.00'

1.00'

1.00'

1.00'

1.00'

1.00'

1.00'

1.00'

1.00'

1.00'

1.00'

1.00'

1.00'

1.00'

1.00'

1.00'

1.00'

1.00'

1.00'

1.00'

1.00'

1.00'

1.00'

1.00'

1.00'

1.00'

1.00'

1.00'

1.00'

1.00'

1.00'

1.00'

1.00'

1.00'

1.00'

1.00'

1.00'

1.00'

1.00'

1.00'

1.00'

1.00'

1.00'

1.00'

1.00'

1.00'

1.00'

1.00'

1.00'

1.00'

1.00'

1.00'

1.00'

1.00'

1.00'

1.00'

1.00'

1.00'

1.00'

1.00'

1.00'

1.00'

1.00'

1.00'

1.00'

1.00'

1.00'

1.00'

1.00'

1.00'

1.00'

1.00'

1.00'

1.00'

1.00'

1.00'

1.00'

1.00'

1.00'

1.00'

1.00'

1.00'

1.00'

1.00'

1.00'

1.00'

1.00'

1.00'

1.00'

1.00'

1.00'

1.00'

1.00'

1.00'

1.00'

1.00'

1.00'

1.00'

1.00'

1.00'

1.00'

1.00'

1.00'

1.00'

1.00'