

MAP OF SURVEY AND LOT SPLIT

PREPARED FOR

ROBERT L. KING

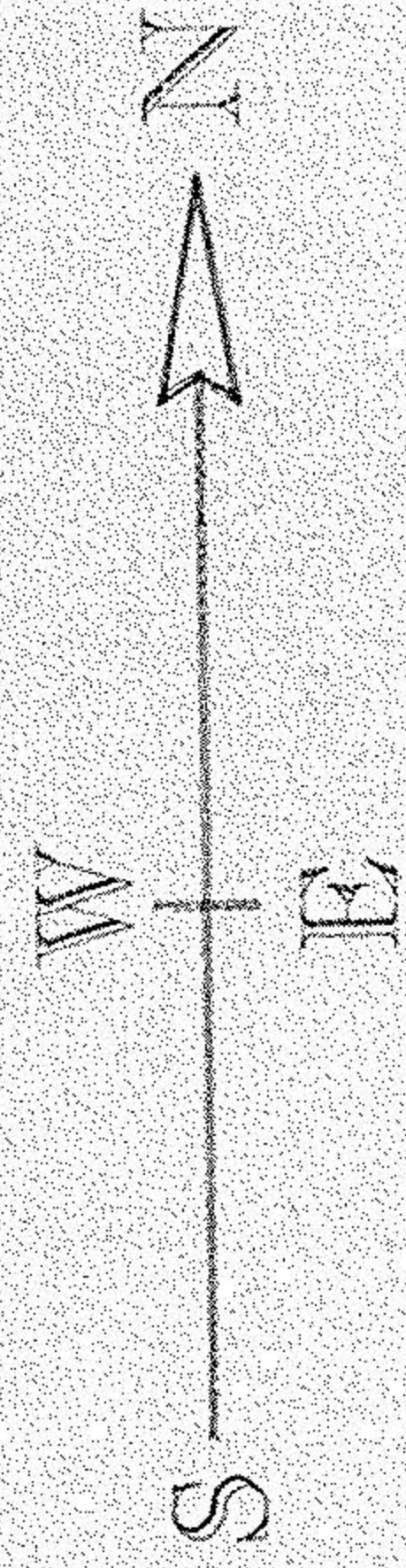
SITUATED IN THE TOWNSHIP OF RUSSIA, COUNTY OF LORAIN, STATE OF OHIO
AND BEING PART OF ORIGINAL RUSSIA TOWNSHIP LOT NO. 81

SURVEYOR'S STATEMENT

DISTANCES ARE EXPRESSED IN FEET AND DECIMAL PARTS THEREOF. BEARINGS ARE TO AN ASSUMED MERIDIAN AND ARE USED TO INDICATE ANGLES ONLY. PERMANENT MONUMENTS WERE FOUND OR SET AS INDICATED HEREON. ALL OF WHICH I DECLARE TO BE CORRECT TO THE BEST OF MY ABILITIES AND BELIEF.

Thomas M. Sniezek
THOMAS M. SNEZEK, R.L.S., 7051
REK 2-5-93

11-23-92
DATE



SCALE: 1" = 100'

FLOYD A. & JEANINE HOTALSKI
P.P. #08-12-001-000-008

PIPE FD.
0.49' N.
I.P. SET
N 01°01'59" E
370.12' REC. & USED

N 01°01'59" E
1445.92' REC. & USED

694.37' CALC.

7.962 ACRES

3.674 ACRES

4.288 ACRES

4.303 ACRES

4.236 ACRES

8.539 ACRES

9.116 ACRES

9.745 ACRES

4.318 ACRES

4.198 ACRES

5.403 ACRES

4.942 ACRES

4.942 ACRES

5.403 ACRES

4.942 ACRES

5.403 ACRES

4.942 ACRES

5.403 ACRES

4.942 ACRES

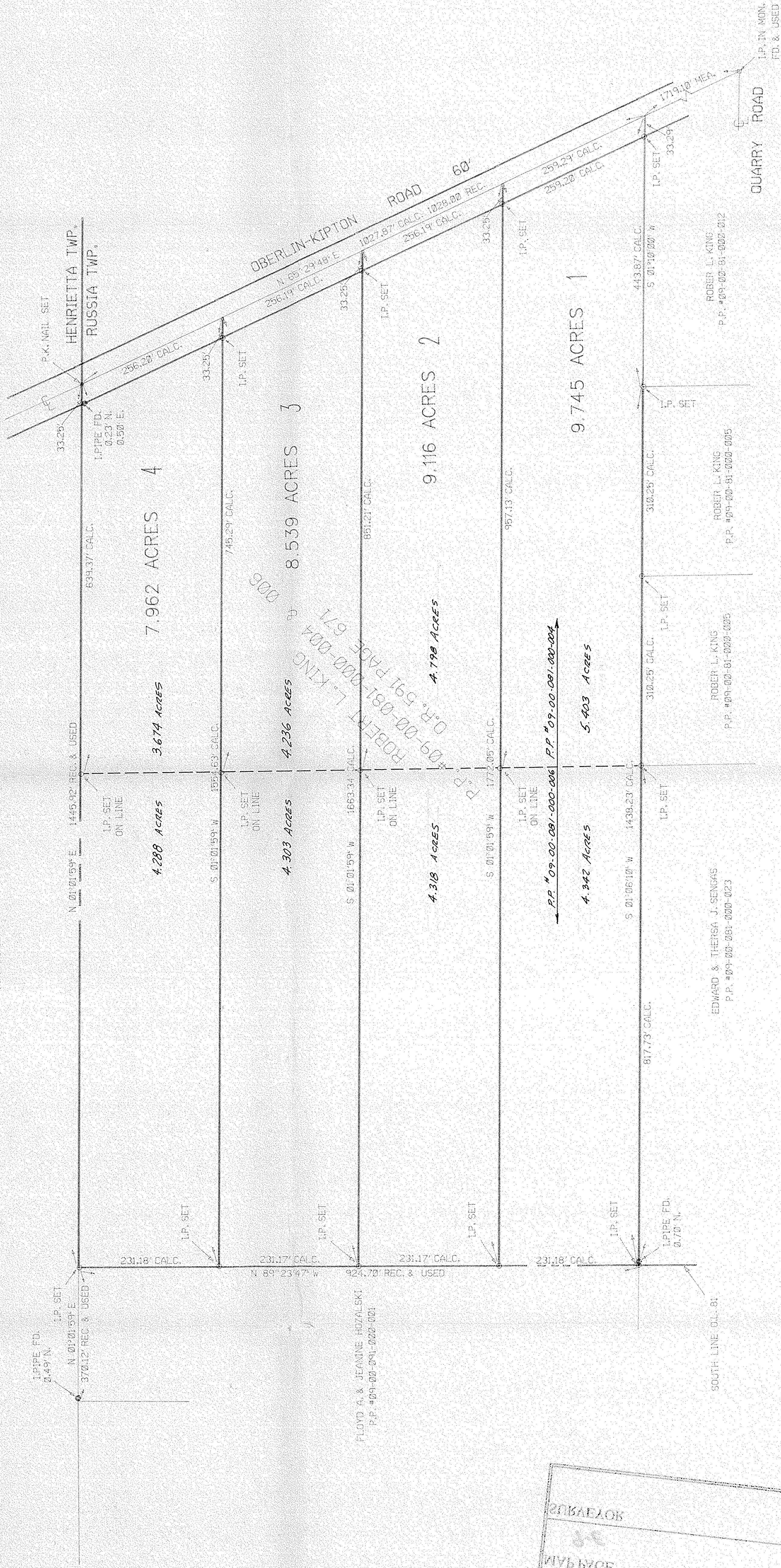
5.403 ACRES

4.942 ACRES

5.403 ACRES

4.942 ACRES

5.403 ACRES



СЪБИРАЛОК	
№	
МУЪ БУДЕ	
СЪГЛ. №	ДАТЕ ОФ СЪБИРА
№	
БЪ ИО	

20225
APPROVED
LORAIN CO.
MAP DEPT.
DATE 2-10-93
PAGE 9-E
BY CAROLYN FRANCIS
VOID AFTER # 20225