

QUARRY RD. 60'

1500' 6.1° 35' 21" W.  
187.50  
82.50  
145.00  
30.00  
30.00  
M.B. Used

M.B. 28.00 1.P. 6e1

N. 89° 46' 19" W. 570.32

PCL. N° 1  
2.4578 AC.

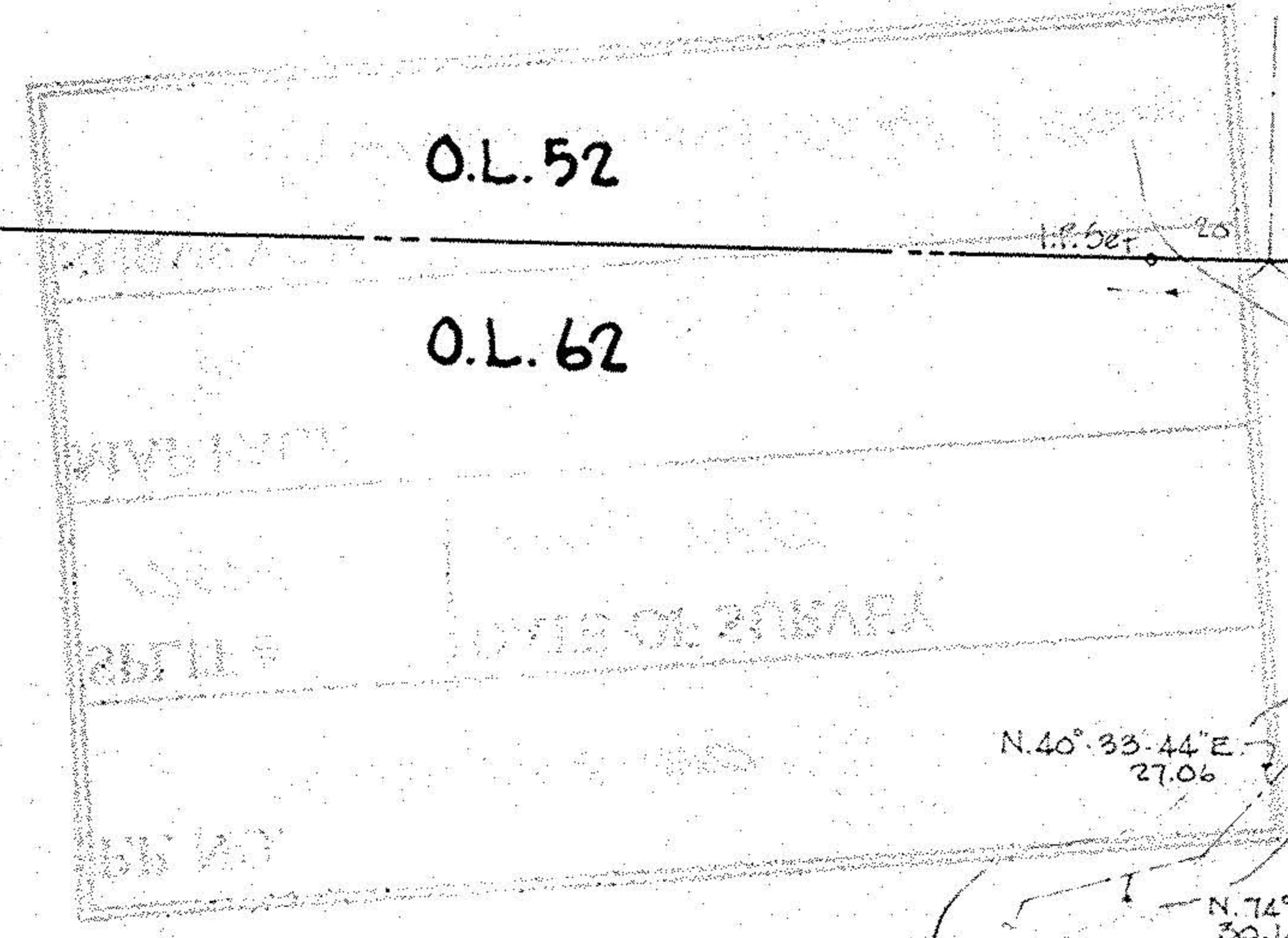
S. 89° 46' 19" E. 549.67

PCL. N° 2  
1.0069 AC.

S. 89° 46' 19" E. 470.33

PCL. N° 3  
1.6609 AC.

N. 89° 46' 19" W. 547.72



O.L. 52

O.L. 62

CREEK

N. 73° 32' 36" E. 56.60

N. 35° 39' 34" E. 17.61

N. 4° 55' 55" W. 47.46

N. 35° 16' 19" W. 120.00

N. 54° 26' 33" W. 42.88

N. 25° 51' 08" W. 68.34

N. 40° 33' 44" E. 27.06

S. 79° 49' 25" E. 57.65

N. 74° 47' 12" E. 30.14

N. 22° 58' 49" E. 25.96

N. 21° 25' 40" W. 102.76

N. 64° 47' 29" E. 32.92

#17072  
APPROVED  
LORAIN CO.  
MAP DEPT.  
DATE 10-15-86  
PAGE 9-E  
BY *J. Collett*  
17072

SURVEY FOR

PASQUALE & GILDA DIFILIPPO

PART OF O.L. 62

LORAIN COUNTY

RUSSIA TOWNSHIP

OHIO

SCALE 1"=40'

MAY, 1985

LAUNDON • SIMON • CAHL & ASSOC.

ENGINEERS

SURVEYORS

FB. 98 P. 72

JOB N° 85-1382

REV. 8-21-86

REV. 5-15-86 Job No. 86-1492 R.G.S.

-007

-605

