

LOT 58

Lands of  
John A. Knipper  
3.86 Ac.  
D.Y. 712-115  
-018

Lands of  
Edith L. Knipper  
71.98 Ac  
-019

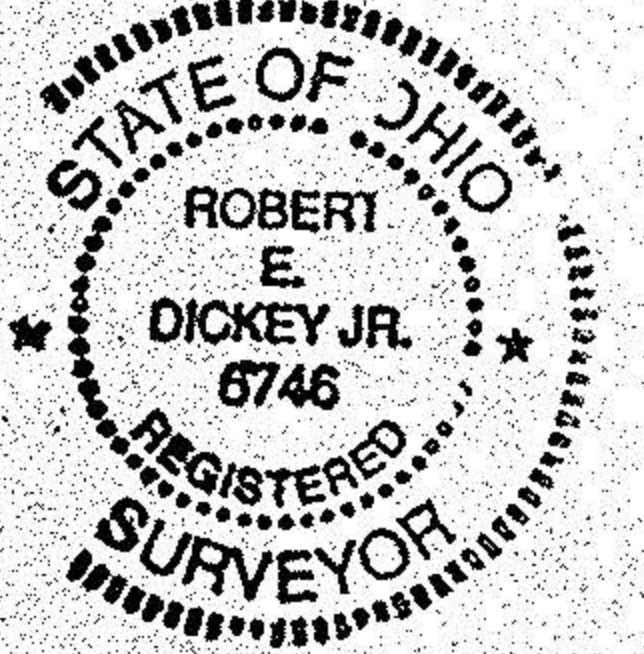
LOT 68

Browning-Ferris Industries  
of Ohio, Inc.  
Part of 112.6815 Ac.  
D.Y. 1403-73  
-001

1.4838 Ac. O.L. 58  
9.1254 Ac. O.L. 68  
10.6092 Ac. Total  
- 0.3751 Ac. South R/W  
10.2341 Ac. useable area

Robert E. Dickey  
Survey by Robert E. Dickey P.S. 6746

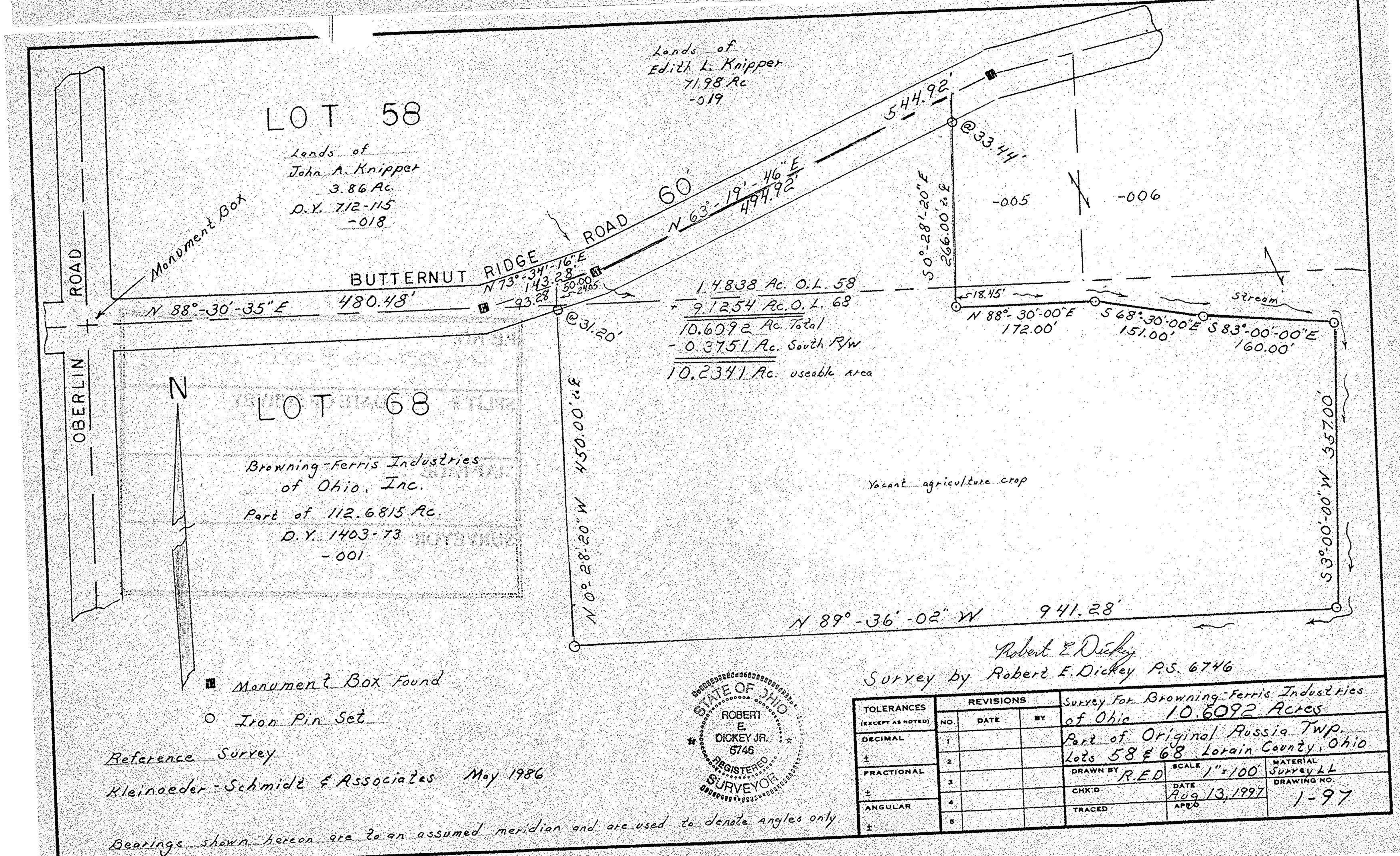
TOLERANCES (EXCEPT AS NOTED)	REVISIONS			Survey For Browning-Ferris Industries of Ohio 10.6092 Acres	
	NO.	DATE	BY	DRAWN BY	SCALE
DECIMAL	1			R.E.D.	1"=100'
±	2			CHK'D	DATE
FRACTIONAL	3			TRACED	Aug 13, 1997
±	4				APPRO
ANGULAR	5				
±					DRAWING NO.
					1-97



Reference Survey  
Kleinoeder-Schmidt & Associates May 1986

Bearings shown hereon are to an assumed meridian and are used to denote angles only

\*TELETYPE POST 18AE-08 -11X17



LOT 58

Lands of  
John A. Knipper  
3.86 Ac.  
D.Y. 712-115  
-018

Lands of  
Edith L. Knipper  
71.98 Ac  
-019

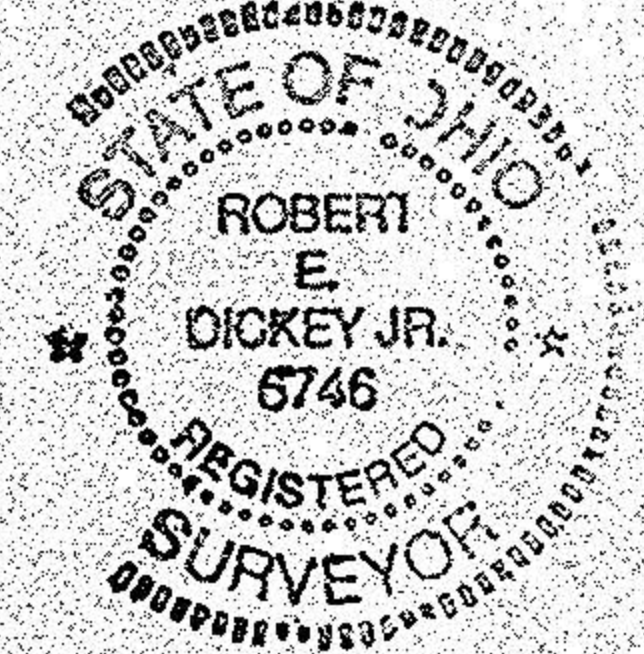
LOT 68

Browning-Ferris Industries  
of Ohio, Inc.  
Part of 112.6815 Ac.  
D.Y. 1403-73  
-001

1.4838 Ac. O.L. 58  
9.1254 Ac. O.L. 68  
10.6092 Ac. Total  
- 0.3751 Ac. South R/W  
10.2341 Ac. useable area

Robert E. Dickey  
Survey by Robert E. Dickey P.S. 6746

TOLERANCES (EXCEPT AS NOTED)	REVISIONS			Survey For Browning-Ferris Industries of Ohio 10.6092 Acres	
	NO.	DATE	BY	DRAWN BY	SCALE
DECIMAL	1			R.E.D.	1"=100'
±	2			CHK'D	DATE
FRACTIONAL	3			TRACED	Aug 13, 1997
±	4				APPRO
ANGULAR	5				
±					DRAWING NO.
					1-97



Reference Survey  
Kleinoeder-Schmidt & Associates May 1986

Bearings shown hereon are to an assumed meridian and are used to denote angles only