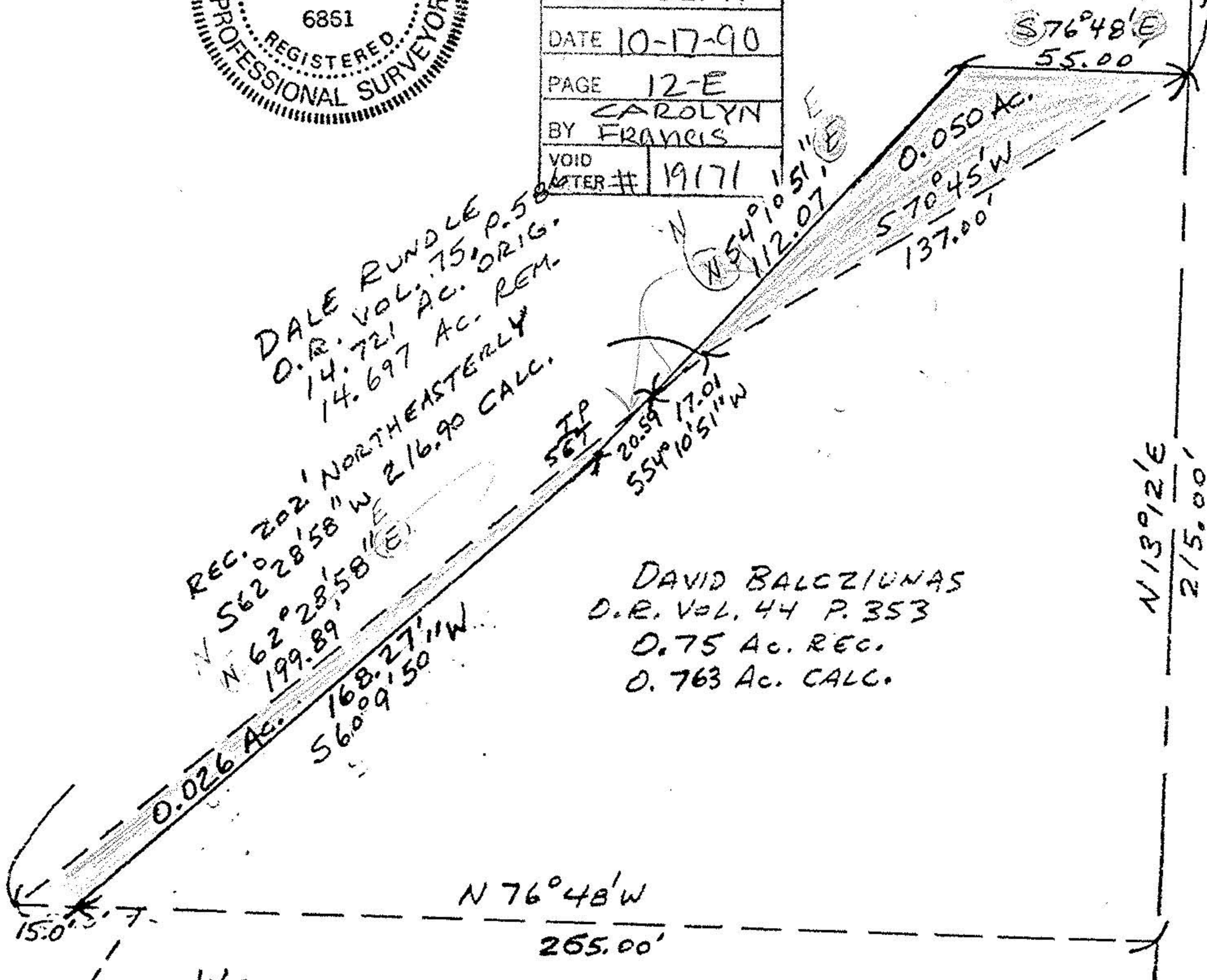
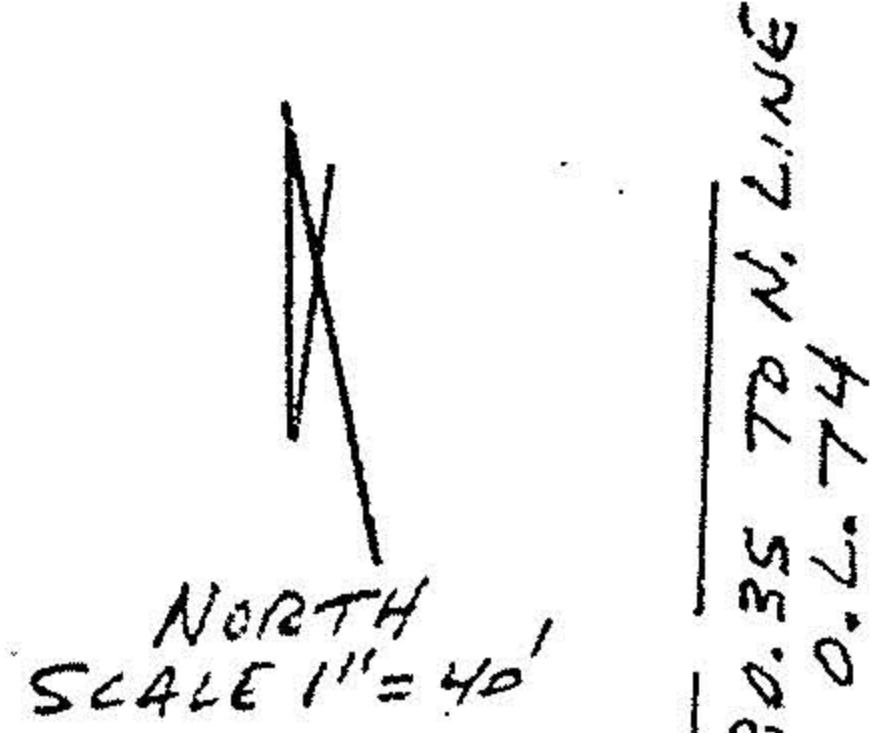


MAP OF SURVEY FOR DALE RUNDLE  
 D.L. #74 - COLUMBIA TWP.  
 AUG. 1990 SCALE 1" = 40'  
 JOHN R. HAMILTON - REG. SURV. #6861  
 REV. 9/19/90



#19171

APPROVED	
LORAIN CO.	
MAP DEPT.	
DATE	10-17-90
PAGE	12-E
BY CAROLYN FRANCIS	
VOID AFTER #	19171



DALE RUNDLE  
 D.R. VOL. 75, P. 58  
 14.721 AC. ORIG.  
 14.697 AC. REM.  
 REC. 202' NORTHEASTERLY  
 216.90 CALC.

DAVID BALCZIUNAS  
 D.R. VOL. 44 P. 353  
 0.75 AC. REC.  
 0.763 AC. CALC.

WESTERLY LINE OF BALCZIUNAS PARCEL WAS ESTABLISHED USING 3 BEARINGS AND DISTANCES SHOWN ON DEED, O.R. VOL. 44, P. 353.

12-00-074-00-71 PART #