

- ⊕ MON. FOUND
- I PIN/PIPE FD.
- I. P. SET OR TO BE SET

P.P. 02-02-018-000-086
LUCAS FRANK TRUSTEE

I.P. FD. IN MON.
BOX & USED
FOR LINE
(IN GOOD
CONDITION)

⊕ No 01739

APPROVED
LORAIN CO.
MAP DEPT
10.00

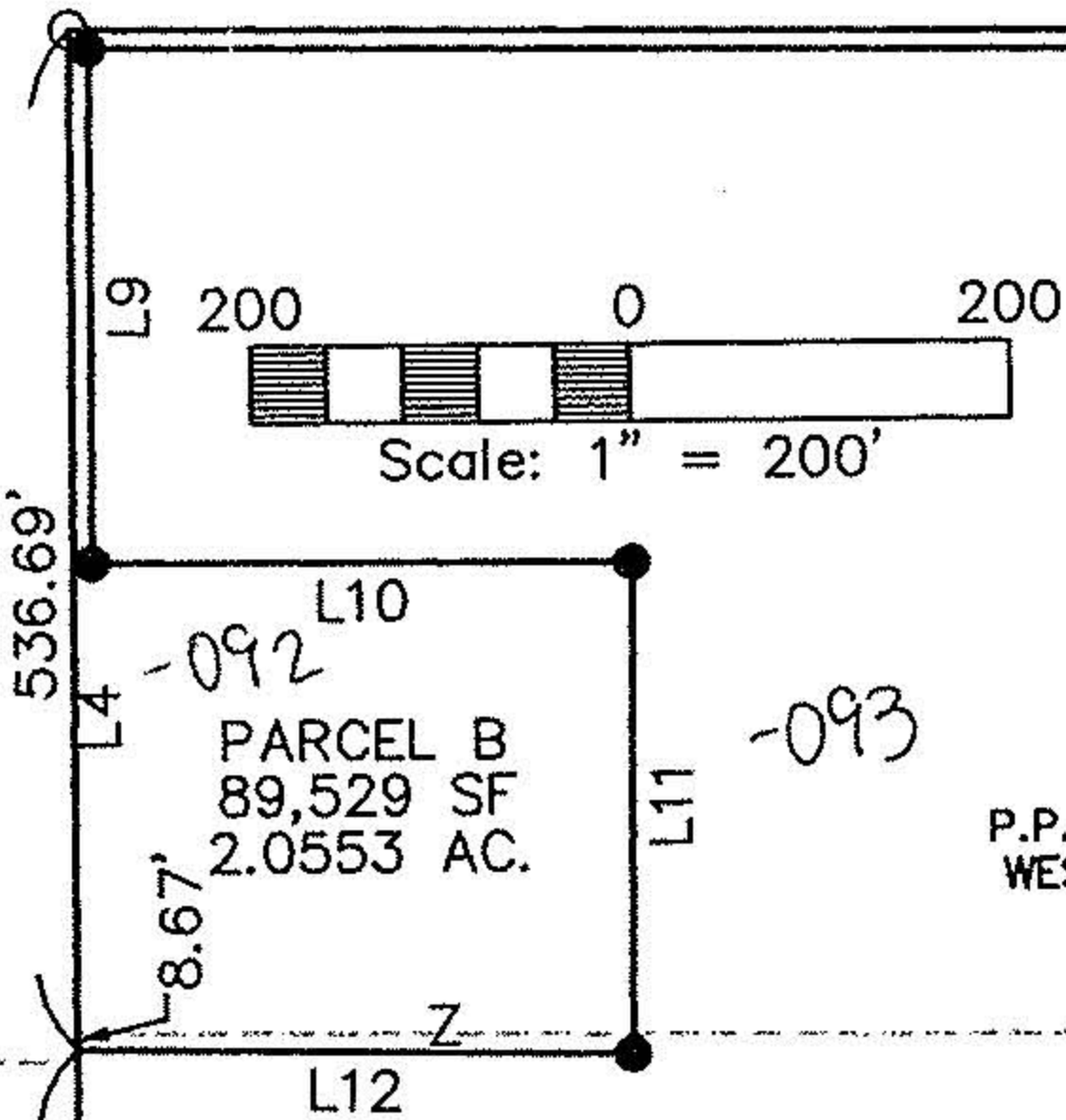
DATE 8-23-04

PAGE 2-02-018-B

BY JHATfield

*04-01739

P.P. 02-02-018-000-033
CITY OF LORAIN



P.P. 02-02-018-000-089
WEST PARK LIMITED PARK

PARCEL A
1,212,306 SF
27.8307 AC.

P.P. 02-02-018-000-088
WEST PARK LIMITED PARK

P.P. 02-02-018-000-028
CITY OF LORAIN

659.30'

P.P. 02-02-018-700-023
THRU
P.P. 02-02-018-700-043
MARQUES FAMILY LIMITED PARTNERSHIP

P.P.
02-02-018-000-084
GARCIA JOSE L. & ELSIE
CO. TRUSTEE

THIS PLAT IS BASED ON SURVEYS PERFORMED
BY KLEINOEDER-SCHMIDT ASSOCIATES IN
MARCH 1987 & JULY 1987.

NUMBER	DIRECTION	DISTANCE
L1	N 01°02'20" E	400.02'
L2	N 01°02'20" E	1191.56'
L3	N 89°30'08" W	1098.65'
L4	S 00°15'40" W	528.02'
L5	S 00°15'40" W	667.97'
L6	S 89°44'20" E	721.82'
L7	S 89°44'20" E	360.65'
L8	S 89°30'08" E	1088.51'
L9	N 00°15'40" E	270.36'
L10	N 89°37'49" W	284.77'
L11	N 00°31'18" E	259.29'
L12	S 89°02'51" E	293.61'



Ehtesham M. Suhail

EHTESHAM M. SUHAIL, P.S. 7806

CERTIFICATE:

DISTANCES ARE SHOWN IN FEET AND DECIMAL PARTS THEREOF. BEARINGS ARE BASED ON AN ASSUMED MERIDIAN. IRON PINS ARE SET OR WILL BE SET AT ALL POINTS SHOWN. ALL OF WHICH I BELIEVE TO BE CORRECT.

APPROVED
AS TO DESCRIPTION ONLY
Date 8/23/04
City of Lorain
Secretary: *William C. Foster*

APPROVED BY THE LORAIN CITY PLANNING COMMISSION
COMMISSION..... NO PLAT REQUIRED
8-23-04
SECRETARY: LORAIN CITY PLANNING COMMISSION

LEAVITT ROAD (105')
R/W

I.P. FD. IN MON.
BOX & USED
(IN GOOD
CONDITION)

Suhail & Suhail, Inc.
Consulting Engineers & Surveyors
8401 Chagrin Road, Suite 17
Chagrin Falls, Ohio 44023
(440) 708-1330 Fax (440) 708-1334

DR. BY HS
CHK. BY EMS
DATE JULY 25, 2004
SCALE 1" = 200'

LOT CONSOLIDATION & SPLIT
FOR
P.P. 02-02-018-000-088
P.P. 02-02-018-000-089

PREPARED FOR
WEST PARK LIMITED INC.

SUB JOB NO.
04141

SHEET NO.
1 OF 1