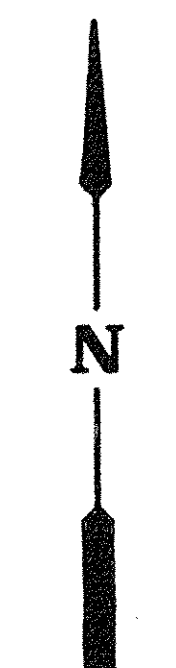


T.M. Pg.
10-00-005-C & D

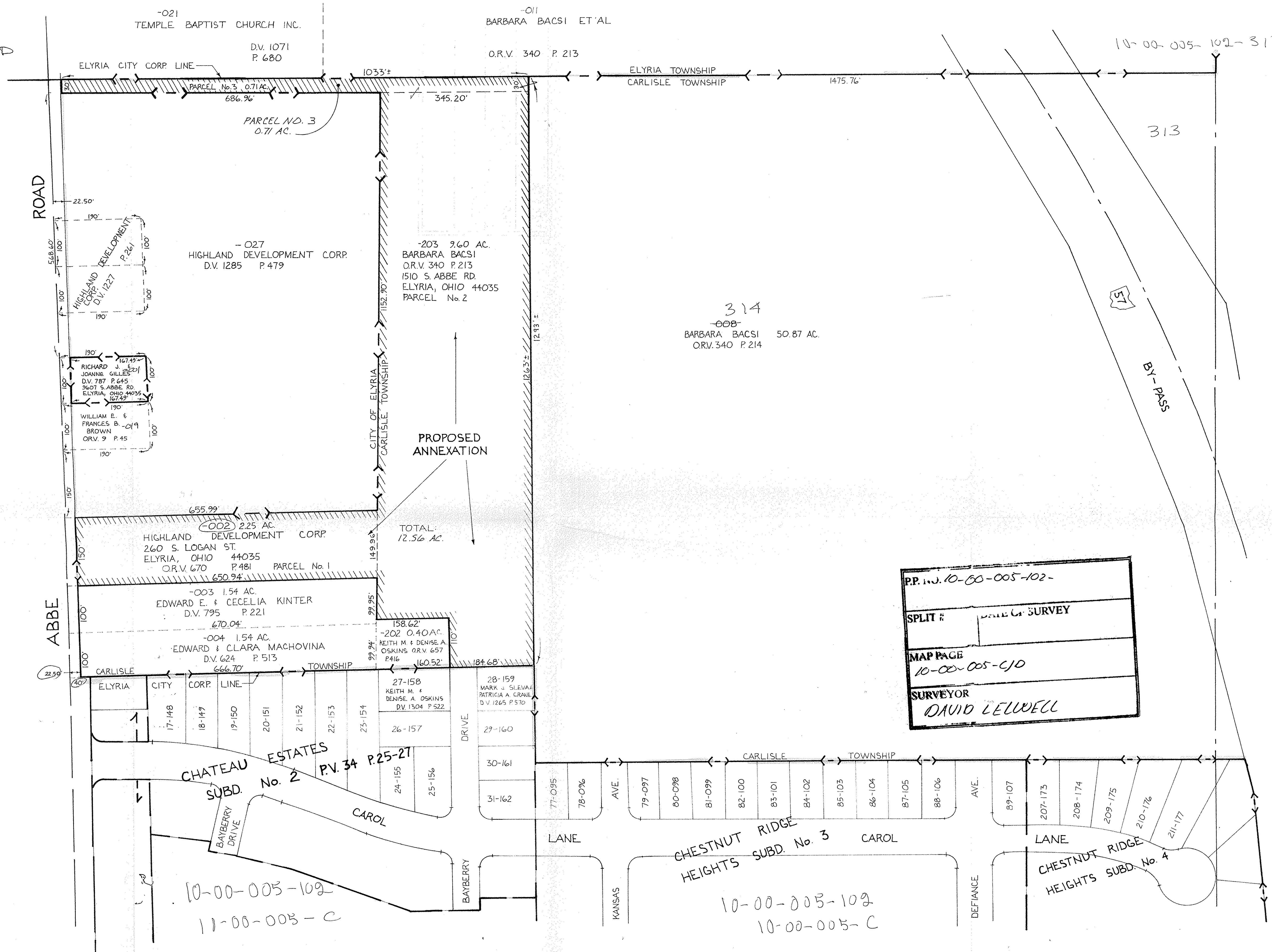


SCALE:
1" = 100'

▬ = CORP. LINE ON TAX MAP
AS OF 1/31/94

LEGEND

PRESENT CORPORATION LINE
PROPOSED CORPORATION LINE



PP. 10-00-005-102-
SPLIT # []
MAP PAGE
10-00-005-C/D
SURVEYOR
DAVID L. ELWELL

10-00-005-102
11-00-005-C

10-00-005-102
10-00-005-C

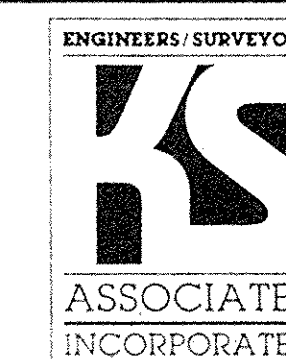
David L. Elwell
DAVID L. ELWELL



REVISIONS	
6-10-93	MISC. REV.
4-6-93	MISC. REV.

PLAT OF TERRITORY TO BE
ANNEXED TO THE CITY OF ELYRIA
PART OF CARLISLE TOWNSHIP SECTION 5
COUNTY OF LORAIN STATE OF OHIO

KS ASSOCIATES, INC.
ENGINEERS/SURVEYORS
424 Middle Avenue
P.O. Box 89
Elyria, Ohio 44036
Elyria (216) 322-6317 • Lorain (216) 244-5757



SHEET
1 OF
1
JOB NO.
92-620