

4276

54m. 522
V 522

10-00-012-F

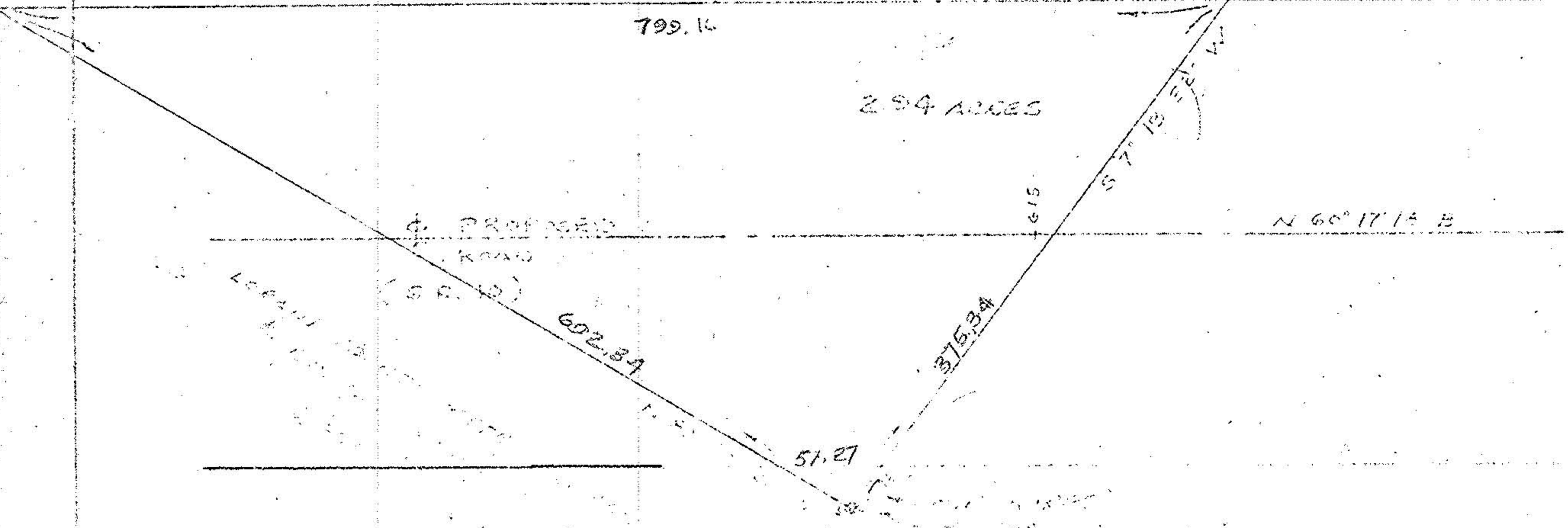
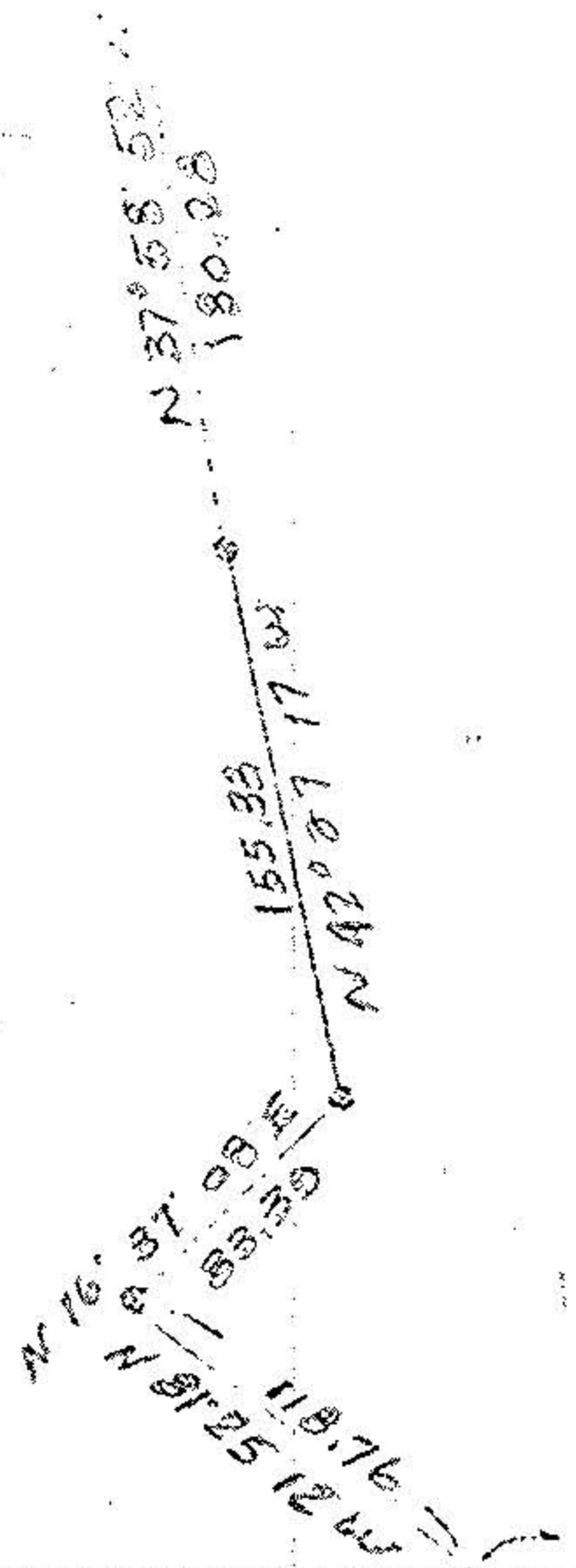
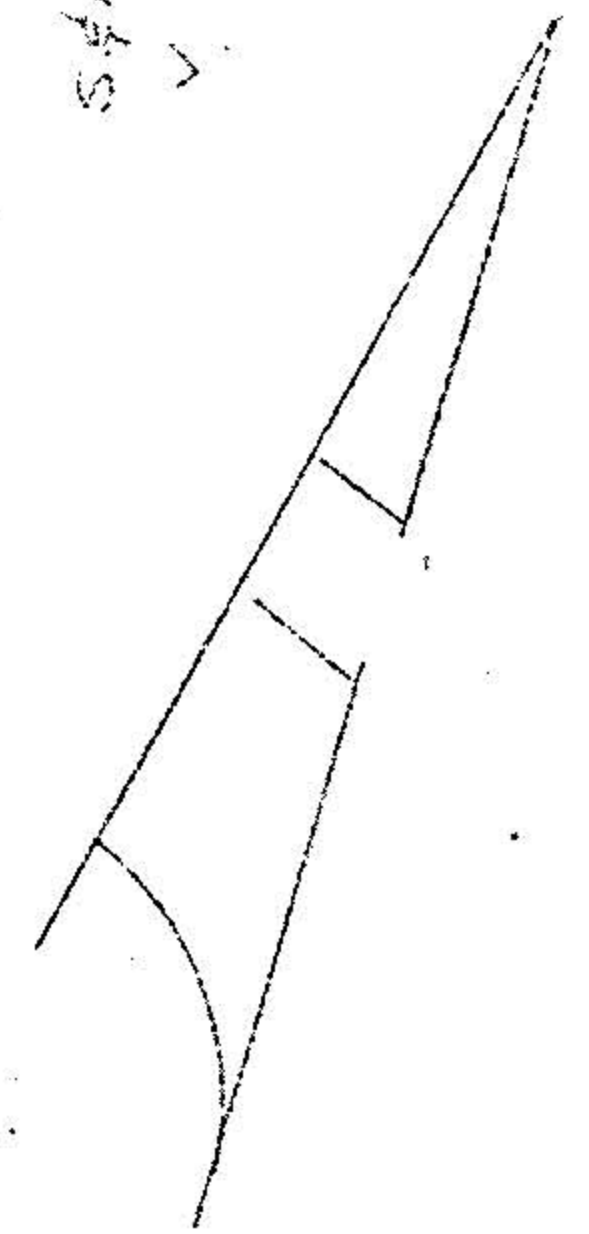
-091
795 ACRES

11-11-11

● DENOTES I.P.

LEBANON COUNTY
METROPOLITAN PARK DISTRICT
BOARD OF COMMISSIONERS

V 964 PG. 06



294 ACRES

PROPOSED
ROAD

LEGEND