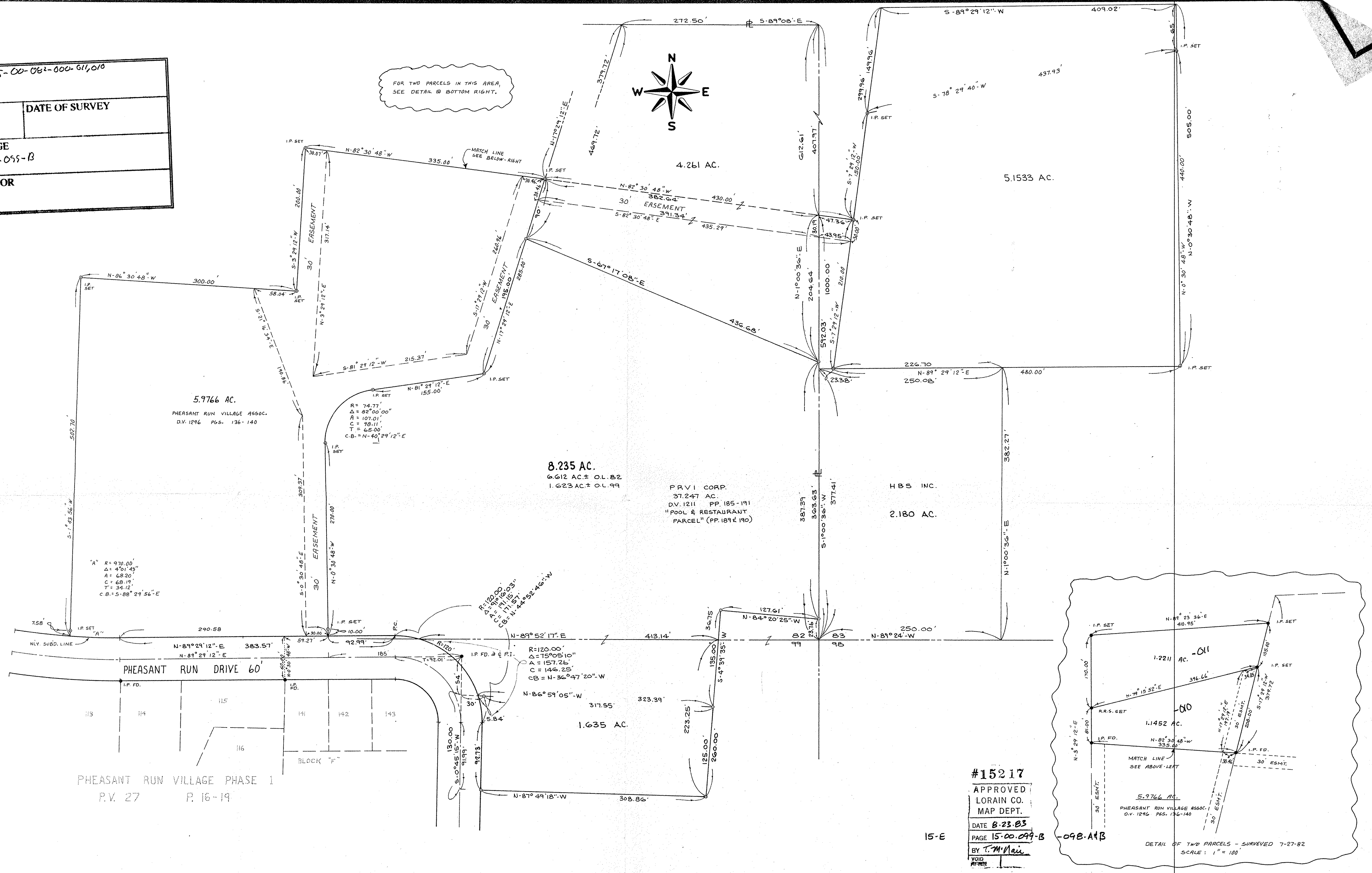
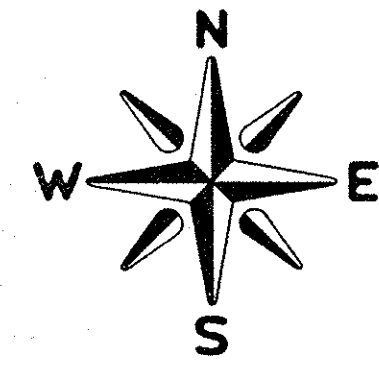


P.P. NO. 15-00-062-000-611,010  
 SPLIT # 15217  
 DATE OF SURVEY  
 MAP PAGE 15-00-055-B  
 SURVEYOR

FOR TWO PARCELS IN THIS AREA, SEE DETAIL @ BOTTOM RIGHT.



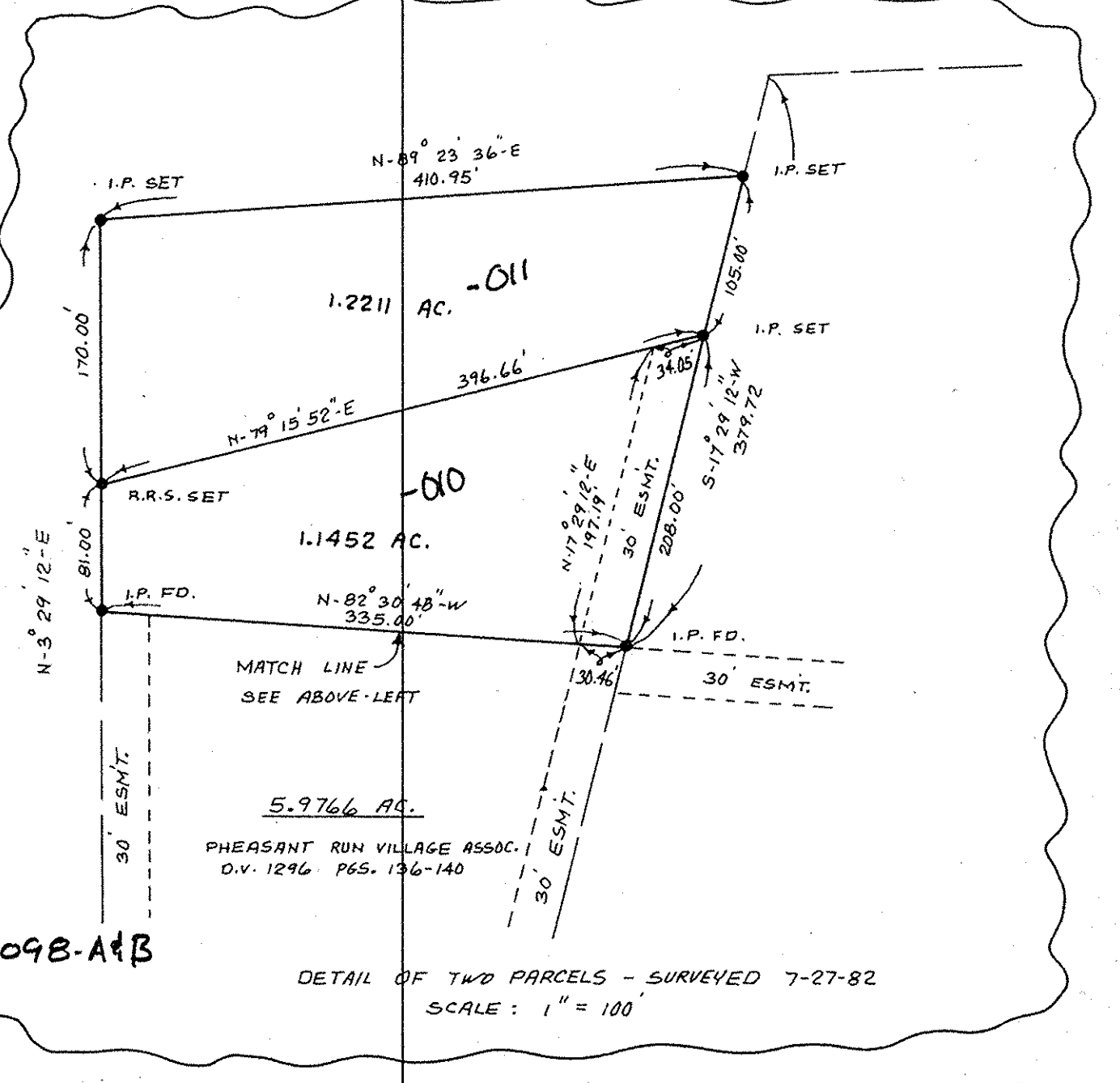
"A" R = 970.00  
 Δ = 4°01'45"  
 A = 68.20'  
 C = 68.19'  
 T = 34.12'  
 C.B. = N-88°29'56"E

R = 74.77'  
 Δ = 82°00'00"  
 A = 107.01'  
 C = 98.11'  
 T = 65.00'  
 C.B. = N-40°29'12"E

R = 170.00'  
 Δ = 15°05'10"  
 A = 117.95'  
 C = 111.95'  
 T = 111.95'  
 C.B. = N-44°52'46"W

R = 120.00'  
 Δ = 15°05'10"  
 A = 157.26'  
 C = 146.25'  
 C.B. = N-36°47'20"W

#15217  
 APPROVED  
 LORAIN CO.  
 MAP DEPT.  
 DATE 8-23-83  
 PAGE 15-00-099-B  
 BY T.M. Mai  
 VOID  
 IF RE-MADE



No.	Date	Description	By
5.	7-30-82	ADD 1.2211 & 1.1452 AC. P.C.S. - UPDATE OWNERSHIP OF 5.9766 AC. P.C.L.	K.V.S.
4.	6-1-82	ADD 4.261 AC. P.C.L., 2.180 AC. P.C.L., 1.635 AC. P.C.L.	BE
3.	5-14-82	ADD 8.235 AC. P.C.L. - OMIT 7.319 AC.	BE
2.	5-7-82	ADD 7.319 AC. P.C.L.	BE
1.	2-01-82	REVISE TO SHOW RE SPLIT OF ESMT. & ADD 5.1 AC. P.C.L.	BE

PROJECT  
**BOUNDARY SURVEY**  
 PART OF ORIGINAL LAGRANGE TWP. LOT N° 82 & 83  
 COUNTY OF LORAIN STATE OF OHIO

PREPARED FOR:  
**H.B.S. INC.**

Drawn by: K.V.S.  
 Checked by:  
 App. by:  
 Scale: 1" = 60'  
 Date: JAN. 26, 1982

**KLEINOEDER-SCHMIDT**  
**and ASSOCIATES**  
 ENGINEERS — SURVEYORS — CONSULTANTS in LAND PLANNING  
 ELYRIA - NORWALK - MEDINA  
 OHIO

REFERENCES
P.V. 27 P. 16-19

SHEET NO.	JOB NO.
1 of 1	67-17