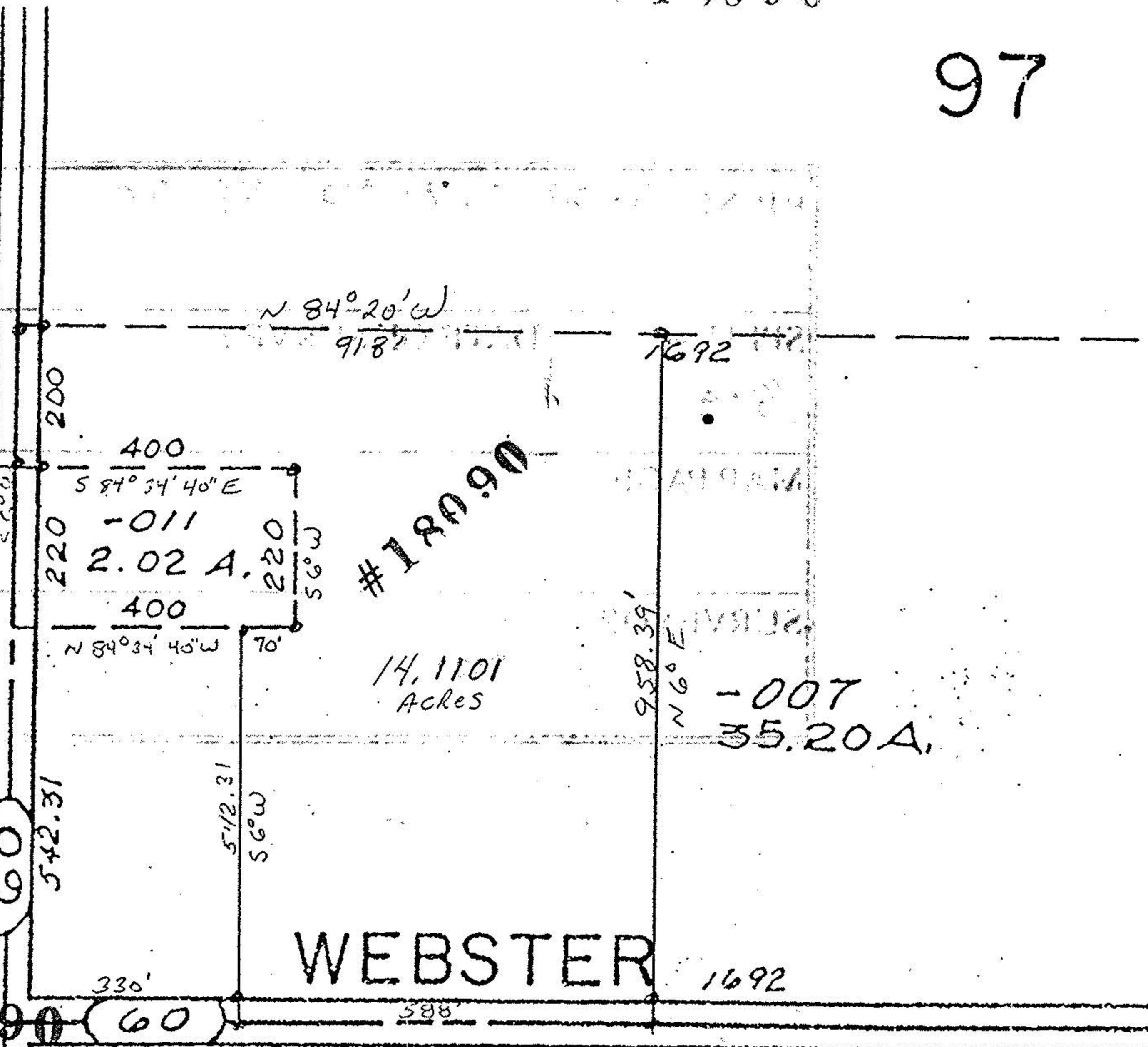


97

-003  
40.00 A.

WHITEHEAD



60

542.31

200

220

400

S 84° 34' 40" E

-011

2.02 A.

220

400

N 84° 34' 40" W

70'

512.31

S 6° W

330'

WEBSTER

S 84° 34' - 40" E

60

588

958.39'

N 6° E

1692

1692

-007  
35.20 A.

955.09

-016

16.54 A.

756

756

LAGRANGE

APPROVED  
LORAIN CO.  
MAP DEPT.

DATE 9-1-88

PAGE 15-F

BY Carol Francis

VOID AFTER # 18090

8-10-88