

KS ASSOCIATES, INC.  
 424 Middle Ave. P.O. Box 89  
 ELYRIA, OHIO 44036  
 (216) 322-6317

JOB 87-403 LANDLORD SURVEY

SHEET NO \_\_\_\_\_ OF \_\_\_\_\_

CALCULATED BY \_\_\_\_\_ DATE \_\_\_\_\_

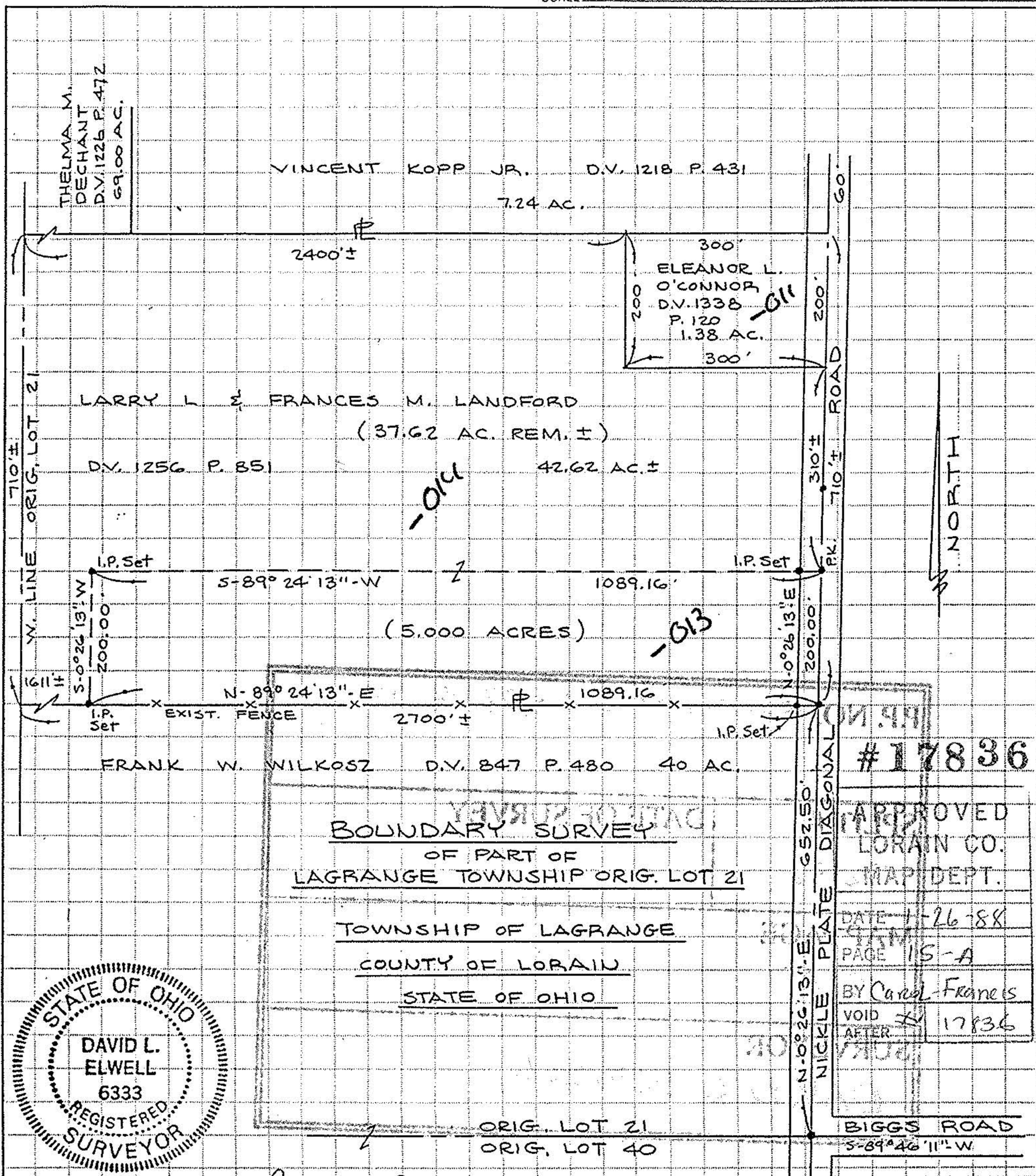
CHECKED BY \_\_\_\_\_ DATE DEC. 3, 1987

SCALE 1" = 200'

15-00-021-000

\*17836

15-A



#17836

APPROVED  
 LORAIN CO.  
 MAP DEPT.

DATE 1-26-88

PAGE 15-A

BY Carol Frameis

VOID AFTER 17836

